

CNNM4 Antibody (Center)
Affinity Purified Rabbit Polyclonal Antibody (Pab)
Catalog # AP5419c**Specification**

CNNM4 Antibody (Center) - Product Information

Application	IHC-P, WB,E
Primary Accession	Q6P4Q7
Other Accession	NP_064569.3
Reactivity	Human
Host	Rabbit
Clonality	Polyclonal
Isotype	Rabbit IgG
Calculated MW	86607
Antigen Region	565-593

CNNM4 Antibody (Center) - Additional Information**Gene ID** 26504**Other Names**

Metal transporter CNNM4, Ancient conserved domain-containing protein 4, Cyclin-M4, CNNM4, ACDP4, KIAA1592

Target/Specificity

This CNNM4 antibody is generated from rabbits immunized with a KLH conjugated synthetic peptide between 565-593 amino acids from the Central region of human CNNM4.

Dilution

IHC-P~~1:50~100

WB~~1:1000

E~~Use at an assay dependent concentration.

Format

Purified polyclonal antibody supplied in PBS with 0.09% (W/V) sodium azide. This antibody is purified through a protein A column, followed by peptide affinity purification.

Storage

Maintain refrigerated at 2-8°C for up to 2 weeks. For long term storage store at -20°C in small aliquots to prevent freeze-thaw cycles.

Precautions

CNNM4 Antibody (Center) is for research use only and not for use in diagnostic or therapeutic procedures.

CNNM4 Antibody (Center) - Protein Information**Name** CNNM4

Synonyms ACDP4, KIAA1592

Function Probable metal transporter. The interaction with the metal ion chaperone COX11 suggests that it may play a role in sensory neuron functions (By similarity). May play a role in biomineralization and retinal function.

Cellular Location

Cell membrane; Multi-pass membrane protein

Tissue Location

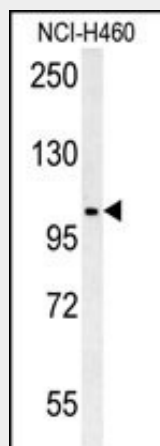
Widely expressed. Highly expressed in heart.

CNNM4 Antibody (Center) - Protocols

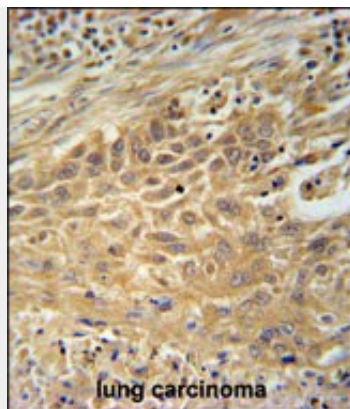
Provided below are standard protocols that you may find useful for product applications.

- [Western Blot](#)
- [Blocking Peptides](#)
- [Dot Blot](#)
- [Immunohistochemistry](#)
- [Immunofluorescence](#)
- [Immunoprecipitation](#)
- [Flow Cytometry](#)
- [Cell Culture](#)

CNNM4 Antibody (Center) - Images



CNNM4 Antibody (Center)(Cat. #AP5419c) western blot analysis in NCI-H460 cell line lysates (35ug/lane). This demonstrates the CNNM4 antibody detected the CNNM4 protein (arrow).



CNNM4 Antibody (Center) (Cat. #AP5419c) immunohistochemistry analysis in formalin fixed and paraffin embedded human lung carcinoma followed by peroxidase conjugation of the secondary antibody and DAB staining. This data demonstrates the use of the CNNM4 Antibody (Center) for immunohistochemistry. Clinical relevance has not been evaluated.

CNNM4 Antibody (Center) - Background

This gene encodes a member of the ancient conserved domain containing protein family. Members of this protein family contain a cyclin box motif and have structural similarity to the cyclins. The encoded protein may play a role in metal ion transport. Mutations in this gene are associated with Jalili syndrome which consists of cone-rod dystrophy and amelogenesis imperfecta. [provided by RefSeq].

CNNM4 Antibody (Center) - References

Polok, B., et al. Am. J. Hum. Genet. 84(2):259-265(2009)
Parry, D.A., et al. Am. J. Hum. Genet. 84(2):266-273(2009)
Guo, D., et al. Mol Pain 1, 15 (2005) :
Michaelides, M., et al. J. Med. Genet. 41(6):468-473(2004)
Wang, C.Y., et al. Gene 306, 37-44 (2003) :
Downey, L.M., et al. Eur. J. Hum. Genet. 10(12):865-869(2002)
Jalili, I.K., et al. J. Med. Genet. 25(11):738-740(1988)