

CRABP1 Antibody (C-term)
Affinity Purified Rabbit Polyclonal Antibody (Pab)
Catalog # AP5422b

Specification

CRABP1 Antibody (C-term) - Product Information

Application	IHC-P, WB,E
Primary Accession	P29762
Other Accession	P62966 , P62965 , P40220 , P62964 , NP_004369.1
Reactivity	Human, Mouse
Predicted	Bovine, Chicken, Rat
Host	Rabbit
Clonality	Polyclonal
Isotype	Rabbit IgG
Calculated MW	15566
Antigen Region	90-118

CRABP1 Antibody (C-term) - Additional Information

Gene ID 1381

Other Names

Cellular retinoic acid-binding protein 1, Cellular retinoic acid-binding protein I, CRABP-I, CRABP1, RBP5

Target/Specificity

This CRABP1 antibody is generated from rabbits immunized with a KLH conjugated synthetic peptide between 90-118 amino acids from the C-terminal region of human CRABP1.

Dilution

IHC-P~~1:50~100

WB~~1:1000

E~~Use at an assay dependent concentration.

Format

Purified polyclonal antibody supplied in PBS with 0.09% (W/V) sodium azide. This antibody is purified through a protein A column, followed by peptide affinity purification.

Storage

Maintain refrigerated at 2-8°C for up to 2 weeks. For long term storage store at -20°C in small aliquots to prevent freeze-thaw cycles.

Precautions

CRABP1 Antibody (C-term) is for research use only and not for use in diagnostic or therapeutic procedures.

CRABP1 Antibody (C-term) - Protein Information

Name CRABP1

Synonyms RBP5

Function Cytosolic CRABPs may regulate the access of retinoic acid to the nuclear retinoic acid receptors.

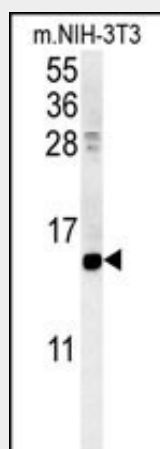
Cellular Location
Cytoplasm.

CRABP1 Antibody (C-term) - Protocols

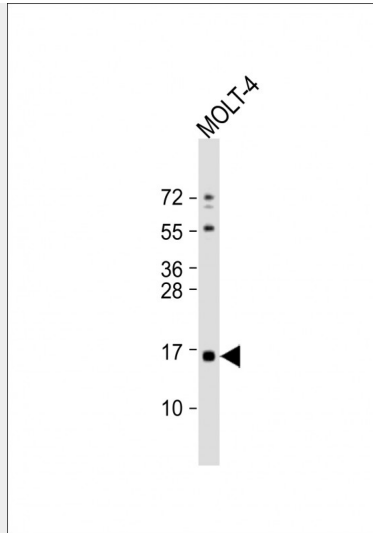
Provided below are standard protocols that you may find useful for product applications.

- [Western Blot](#)
- [Blocking Peptides](#)
- [Dot Blot](#)
- [Immunohistochemistry](#)
- [Immunofluorescence](#)
- [Immunoprecipitation](#)
- [Flow Cytometry](#)
- [Cell Culture](#)

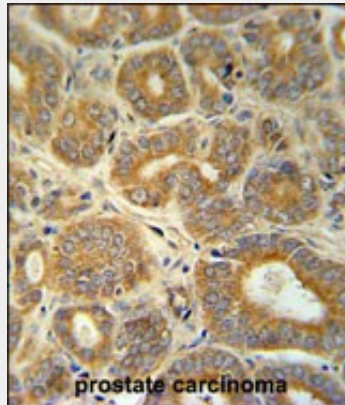
CRABP1 Antibody (C-term) - Images



CRABP1 Antibody (C-term)(Cat. #AP5422b) western blot analysis in mouse NIH-3T3 cell line lysates (35ug/lane). This demonstrates the CRABP1 antibody detected the CRABP1 protein (arrow).



Anti-CRABP1 Antibody (C-term) at 1:1000 dilution + MOLT-4 whole cell lysate Lysates/proteins at 20 µg per lane. Secondary Goat Anti-Rabbit IgG, (H+L), Peroxidase conjugated at 1/10000 dilution. Predicted band size : 16 kDa Blocking/Dilution buffer: 5% NFDM/TBST.



CRABP1 Antibody (C-term) (Cat. #AP5422b) immunohistochemistry analysis in formalin fixed and paraffin embedded human prostate carcinoma followed by peroxidase conjugation of the secondary antibody and DAB staining. This data demonstrates the use of the CRABP1 Antibody (C-term) for immunohistochemistry. Clinical relevance has not been evaluated.

CRABP1 Antibody (C-term) - Background

This gene encodes a specific binding protein for a vitamin A family member and is thought to play an important role in retinoic acid-mediated differentiation and proliferation processes. It is structurally similar to the cellular retinol-binding proteins, but binds only retinoic acid at specific sites within the nucleus, which may contribute to vitamin A-directed differentiation in epithelial tissue.

CRABP1 Antibody (C-term) - References

- Tang, X.H., et al. *Exp. Cell Res.* 314(1):38-51(2008)
- Uhrig, M., et al. *BMC Med* 6, 38 (2008) :
- Guidez, F., et al. *Proc. Natl. Acad. Sci. U.S.A.* 104(47):18694-18699(2007)
- Tanaka, K., et al. *Oncogene* 26(44):6456-6468(2007)
- Wu, Q., et al. *Mol. Cancer* 6, 45 (2007) :

Flagiello, D., et al. Cytogenet. Cell Genet. 76 (1-2), 17-18 (1997) :
Liu, W., et al. Biochem. Biophys. Res. Commun. 229(3):922-929(1996)
Eller, M.S., et al. Exp. Cell Res. 198(2):328-336(1992)
Astrom, A., et al. J. Biol. Chem. 266(26):17662-17666(1991)
Ong, D.E. Arch Dermatol 123 (12), 1693-1695A (1987) :