

**Nanos3 Polyclonal Antibody**  
**Purified Rabbit Polyclonal Antibody (Pab)**  
**Catalog # AP54237****Specification**

---

**Nanos3 Polyclonal Antibody - Product Information**

Application	WB
Primary Accession	<a href="#">P60323</a>
Reactivity	Rat, Pig, Bovine
Host	Rabbit
Clonality	Polyclonal
Calculated MW	18844

**Nanos3 Polyclonal Antibody - Additional Information****Gene ID** 342977**Other Names**

Nanos homolog 3, NOS-3, NANOS3, NOS3

**Format**

0.01M TBS(pH7.4), 0.09% (W/V) sodium azide and 50% Glyce

**Storage**

Store at -20 °C for one year. Avoid repeated freeze/thaw cycles. When reconstituted in sterile pH 7.4 0.01M PBS or diluent of antibody the antibody is stable for at least two weeks at 2-4 °C.

**Nanos3 Polyclonal Antibody - Protein Information****Name** NANOS3**Synonyms** NOS3**Function**

Plays a role in the maintenance of the undifferentiated state of germ cells regulating the spermatogonia cell cycle and inducing a prolonged transit in G1 phase. Affects cell proliferation probably by repressing translation of specific mRNAs. Maintains the germ cell lineage by suppressing both Bax-dependent and -independent apoptotic pathways. Essential in the early stage embryo to protect the migrating primordial germ cells (PGCs) from apoptosis.

**Cellular Location**

Nucleus. Cytoplasm. Cytoplasm, Stress granule {ECO:0000250|UniProtKB:P60324}. Cytoplasm, P-body {ECO:0000250|UniProtKB:P60324}. Note=Co-localizes with PUM2, EIF2S1 and TIAL1 in the stress granules. Co-localizes with DCP1A in the P-body {ECO:0000250|UniProtKB:P60324}

**Tissue Location**

Ovary, testis and brain (at protein level). In the ovaries, expressed during multiple stages of oogenesis, including primordial, primary, secondary and antral follicles with the highest expression

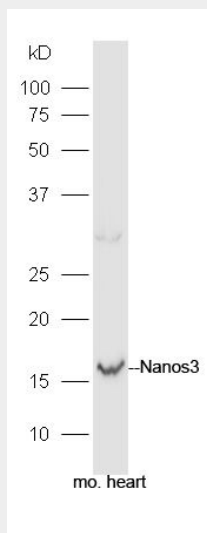
in the oocytes. In the testis, expressed in germ cells, type A spermatogonia (SA), primary spermatocytes (S1), round spermatids (S3) and elongated spermatids.

### Nanos3 Polyclonal Antibody - Protocols

Provided below are standard protocols that you may find useful for product applications.

- [Western Blot](#)
- [Blocking Peptides](#)
- [Dot Blot](#)
- [Immunohistochemistry](#)
- [Immunofluorescence](#)
- [Immunoprecipitation](#)
- [Flow Cytometry](#)
- [Cell Culture](#)

### Nanos3 Polyclonal Antibody - Images



Protein: heart(mouse) lysate at 40ug;  
Primary: rabbit Anti-Nanos3 (bs-10227R) at 1:300;  
Secondary: HRP conjugated Goat-Anti-rabbit IgG(bs-0295G-HRP) at 1: 5000;  
Predicted band size: 19 kD  
Observed band size: 17 kD