

**Tex14 Polyclonal Antibody**  
**Purified Rabbit Polyclonal Antibody (Pab)**  
**Catalog # AP54264****Specification**

---

**Tex14 Polyclonal Antibody - Product Information**

Application	IHC-P
Primary Accession	<a href="#">Q8IWB6</a>
Reactivity	Rat, Dog
Host	Rabbit
Clonality	Polyclonal
Calculated MW	167901

**Tex14 Polyclonal Antibody - Additional Information****Gene ID** 56155**Other Names**

Inactive serine/threonine-protein kinase TEX14, Protein kinase-like protein SgK307, Sugon kinase 307, Testis-expressed sequence 14, Testis-expressed sequence 14 protein, TEX14, SGK307

**Format**

0.01M TBS(pH7.4), 0.09% (W/V) sodium azide and 50% Glyce

**Storage**

Store at -20 °C for one year. Avoid repeated freeze/thaw cycles. When reconstituted in sterile pH 7.4 0.01M PBS or diluent of antibody the antibody is stable for at least two weeks at 2-4 °C.

**Tex14 Polyclonal Antibody - Protein Information****Name** TEX14**Synonyms** SGK307**Function**

Required both for the formation of intercellular bridges during meiosis and for kinetochore-microtubule attachment during mitosis. Intercellular bridges are evolutionarily conserved structures that connect differentiating germ cells and are required for spermatogenesis and male fertility. Acts by promoting the conversion of midbodies into intercellular bridges via its interaction with CEP55: interaction with CEP55 inhibits the interaction between CEP55 and PDCD6IP/ALIX and TSG101, blocking cell abscission and leading to transform midbodies into intercellular bridges. Also plays a role during mitosis: recruited to kinetochores by PLK1 during early mitosis and regulates the maturation of the outer kinetochores and microtubule attachment. Has no protein kinase activity in vitro (By similarity).

**Cellular Location**

Cytoplasm. Midbody. Chromosome, centromere, kinetochore. Note=Detected in the intercellular bridges that connect male germ cell daughter cells after cell division.

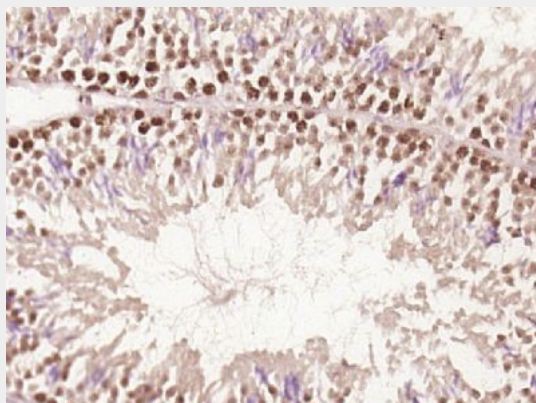
**Tissue Location**

Expression restricted to testis.

**Tex14 Polyclonal Antibody - Protocols**

Provided below are standard protocols that you may find useful for product applications.

- [Western Blot](#)
- [Blocking Peptides](#)
- [Dot Blot](#)
- [Immunohistochemistry](#)
- [Immunofluorescence](#)
- [Immunoprecipitation](#)
- [Flow Cytometry](#)
- [Cell Culture](#)

**Tex14 Polyclonal Antibody - Images**

Paraformaldehyde-fixed, paraffin embedded (Mouse testis); Antigen retrieval by boiling in sodium citrate buffer (pH6.0) for 15min; Block endogenous peroxidase by 3% hydrogen peroxide for 20 minutes; Blocking buffer (normal goat serum) at 37°C for 30min; Antibody incubation with (Tex14) Polyclonal Antibody, Unconjugated (bs-10437R) at 1:400 overnight at 4°C, followed by operating according to SP Kit(Rabbit) (sp-0023) instructions and DAB staining.