

**MTP18 Polyclonal Antibody**  
**Purified Rabbit Polyclonal Antibody (Pab)**  
**Catalog # AP54306****Specification****MTP18 Polyclonal Antibody - Product Information**

Application	IHC-P, IHC-F, IF, ICC, E
Primary Accession	<a href="#">O9UDX5</a>
Reactivity	Rat, Pig, Dog, Bovine
Host	Rabbit
Clonality	Polyclonal
Calculated MW	18 KDa
Physical State	Liquid
Immunogen	KLH conjugated synthetic peptide derived from human MTP18
Epitope Specificity	41-140/166
Isotype	IgG
<b>Purity</b>	
affinity purified by Protein A	
Buffer	0.01M TBS (pH7.4) with 1% BSA, 0.02% Proclin300 and 50% Glycerol.
SUBCELLULAR LOCATION	Mitochondrion inner membrane; Multi-pass membrane protein (Probable).
SIMILARITY	Belongs to the MTFP1 family.
Important Note	This product as supplied is intended for research use only, not for use in human, therapeutic or diagnostic applications.

**Background Descriptions**

MTP18 is a mitochondrial protein and downstream target of the phosphatidylinositol 3-kinase (see PIK3CA, MIM 171834) signaling pathway that plays a role in cell viability and mitochondrial dynamics (Tondera et al., 2004 [PubMed 15155745]).[supplied by OMIM, Mar 2008]

**MTP18 Polyclonal Antibody - Additional Information**

**Gene ID** 51537

**Other Names**

Mitochondrial fission process protein 1, Mitochondrial 18 kDa protein, MTP18, MTFP1, MTP18

**Dilution**

IHC-P~~N/A</span><br \><span class="dilution\_IHC-F">IHC-F~~N/A</span><br \><span class="dilution\_IF">IF~~1:50~200</span><br \><span class="dilution\_ICC">ICC~~N/A</span><br \><span class="dilution\_E">E~~N/A</span>

**Storage**

Store at -20 °C for one year. Avoid repeated freeze/thaw cycles. When reconstituted in sterile pH 7.4 0.01M PBS or diluent of antibody the antibody is stable for at least two weeks at 2-4 °C.

## MTP18 Polyclonal Antibody - Protein Information

**Name** MTFP1

**Synonyms** MTP18

### Function

Involved in the mitochondrial division probably by regulating membrane fission. Loss-of-function induces the release of cytochrome c, which activates the caspase cascade and leads to apoptosis.

### Cellular Location

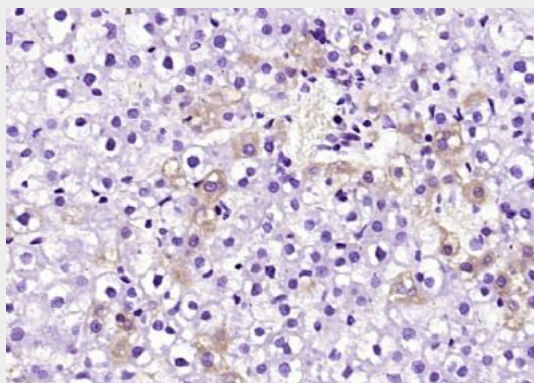
Mitochondrion inner membrane; Multi-pass membrane protein

## MTP18 Polyclonal Antibody - Protocols

Provided below are standard protocols that you may find useful for product applications.

- [Western Blot](#)
- [Blocking Peptides](#)
- [Dot Blot](#)
- [Immunohistochemistry](#)
- [Immunofluorescence](#)
- [Immunoprecipitation](#)
- [Flow Cytometry](#)
- [Cell Culture](#)

## MTP18 Polyclonal Antibody - Images



Paraformaldehyde-fixed, paraffin embedded (rat liver); Antigen retrieval by boiling in sodium citrate buffer (pH6.0) for 15min; Block endogenous peroxidase by 3% hydrogen peroxide for 20 minutes; Blocking buffer (normal goat serum) at 37°C for 30min; Antibody incubation with (MTP18) Polyclonal Antibody, Unconjugated (bs-10756R) at 1:200 overnight at 4°C, followed by operating according to SP Kit(Rabbit) (sp-0023) instructions and DAB staining.