

**T Beta 10 Polyclonal Antibody**  
**Purified Rabbit Polyclonal Antibody (Pab)**  
**Catalog # AP54316**

**Specification**

**T Beta 10 Polyclonal Antibody - Product Information**

Application	IHC-P, IHC-F, IF, E
Primary Accession	<a href="#">P63313</a>
Reactivity	Rat, Pig, Dog, Bovine
Host	Rabbit
Clonality	Polyclonal
Calculated MW	4.9 KDa
Physical State	Liquid
Immunogen	KLH conjugated synthetic peptide derived from human T Beta 10
Epitope Specificity	13-110/44
Isotype	IgG
<b>Purity</b>	
affinity purified by Protein A	
Buffer	0.01M TBS (pH7.4) with 1% BSA, 0.02% Proclin300 and 50% Glycerol.
SUBCELLULAR LOCATION	Cytoplasm, cytoskeleton.
SIMILARITY	Belongs to the thymosin beta family.
Important Note	This product as supplied is intended for research use only, not for use in human, therapeutic or diagnostic applications.

**Background Descriptions**

The beta thymosins are a family of related peptides, initially isolated from calf thymus but known to be present in a wide variety of mammalian and other vertebrate cells and tissues. Thymosin beta 4 was the first member of the family to be characterized. Although TMSB4 was initially proposed to be a thymic hormone acting at early stages of T cell maturation, the high concentration of the protein and its mRNA in a number of other tissues and cells, as well as the lack of an identifiable secretory signal sequence, suggested that it had a general function in many cell types. Thymosin beta 10 is closely related in sequence to TMSB4 and is also an actin sequestering protein.

**T Beta 10 Polyclonal Antibody - Additional Information**

**Gene ID** 9168

**Other Names**

Thymosin beta-10, TMSB10, PTMB10, THYB10

**Dilution**

<span class = "dilution\_IHC-P">IHC-P~~N/A</span><br \><span class = "dilution\_IHC-F">IHC-F~~N/A</span><br \><span class = "dilution\_IF">IF~~1:50~200</span><br \><span class = "dilution\_E">E~~N/A</span>

**Format**

0.01M TBS(pH7.4), 0.09% (W/V) sodium azide and 50% Glyce

**Storage**

Store at -20 °C for one year. Avoid repeated freeze/thaw cycles. When reconstituted in sterile pH 7.4 0.01M PBS or diluent of antibody the antibody is stable for at least two weeks at 2-4 °C.

**T Beta 10 Polyclonal Antibody - Protein Information**

**Name** TMSB10

**Synonyms** PTMB10, THYB10

**Function**

Plays an important role in the organization of the cytoskeleton. Binds to and sequesters actin monomers (G actin) and therefore inhibits actin polymerization (By similarity).

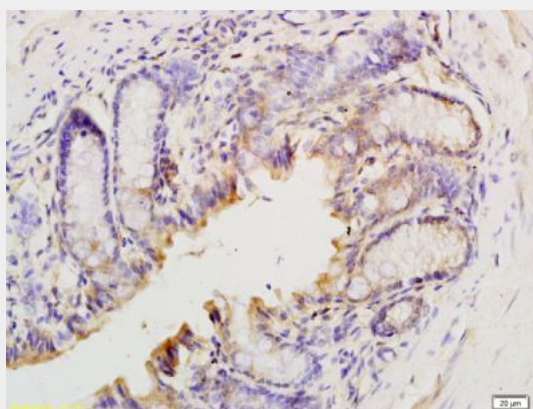
**Cellular Location**

Cytoplasm, cytoskeleton.

**T Beta 10 Polyclonal Antibody - Protocols**

Provided below are standard protocols that you may find useful for product applications.

- [Western Blot](#)
- [Blocking Peptides](#)
- [Dot Blot](#)
- [Immunohistochemistry](#)
- [Immunofluorescence](#)
- [Immunoprecipitation](#)
- [Flow Cytometry](#)
- [Cell Culture](#)

**T Beta 10 Polyclonal Antibody - Images**

Tissue/cell: mouse small intestine; 4% Paraformaldehyde-fixed and paraffin-embedded;  
Antigen retrieval: citrate buffer ( 0.01M, pH 6.0 ), Boiling bathing for 15min; Block endogenous peroxidase by 3% Hydrogen peroxide for 30min; Blocking buffer (normal goat serum,C-0005) at 37°C for 20 min;

Incubation: Anti-T-Beta-10 Polyclonal Antibody, Unconjugated(bs-R) 1:200, overnight at 4°C, followed by conjugation to the secondary antibody(SP-0023) and DAB(C-0010) staining