

Myosin-3 Polyclonal Antibody
Purified Rabbit Polyclonal Antibody (Pab)
Catalog # AP54317**Specification**

Myosin-3 Polyclonal Antibody - Product Information

Application	IHC-P, IHC-F, IF, ICC, E
Primary Accession	P11055
Reactivity	Rat, Bovine
Host	Rabbit
Clonality	Polyclonal
Calculated MW	224 KDa
Physical State	Liquid
Immunogen	KLH conjugated synthetic peptide derived from human Myosin-3
Epitope Specificity	1801-1940/1940
Isotype	IgG
Purity	
affinity purified by Protein A	
Buffer	0.01M TBS (pH7.4) with 1% BSA, 0.02% Proclin300 and 50% Glycerol.
SUBCELLULAR LOCATION	Cytoplasm, myofibril. Note=Thick filaments of the myofibrils.
SIMILARITY	Contains 1 IQ domain.Contains 1 myosin head-like domain.
SUBUNIT	Muscle myosin is a hexameric protein that consists of 2 heavy chain subunits (MHC), 2 alkali light chain subunits (MLC) and 2 regulatory light chain subunits (MLC-2).
DISEASE	Arthrogryposis, distal, 2A (DA2A) [MIM:193700]: A form of distal arthrogryposis, a disease characterized by congenital joint contractures that mainly involve two or more distal parts of the limbs, in the absence of a primary neurological or muscle disease. DA2A is characterized by contractures of the hands and feet, oropharyngeal abnormalities, scoliosis, and a distinctive face that includes a very small oral orifice, puckered lips, and an H-shaped dimple of the chin. Note=The disease is caused by mutations affecting the gene represented in this entry.Arthrogryposis, distal, 2B (DA2B) [MIM:601680]: A form of distal arthrogryposis, a disease characterized by congenital joint contractures that mainly involve two or more distal parts of the limbs, in the absence of a primary neurological or muscle disease. DA2B is

Important Note

characterized by contractures of the hands and feet, and a distinctive face characterized by prominent nasolabial folds, small mouth and downslanting palpebral fissures. Note=The disease is caused by mutations affecting the gene represented in this entry.
This product as supplied is intended for research use only, not for use in human, therapeutic or diagnostic applications.

Myosin-3 Polyclonal Antibody - Additional Information**Gene ID** 4621**Other Names**

Myosin-3, Muscle embryonic myosin heavy chain, Myosin heavy chain 3, Myosin heavy chain, fast skeletal muscle, embryonic, SMHCE, MYH3

Dilution

IHC-P~~N/A<br \>IHC-F~~N/A<br \>IF~~1:50~200<br \>ICC~~N/A<br \>E~~N/A

Format

0.01M TBS(pH7.4), 0.09% (W/V) sodium azide and 50% Glyce

Storage

Store at -20 °C for one year. Avoid repeated freeze/thaw cycles. When reconstituted in sterile pH 7.4 0.01M PBS or diluent of antibody the antibody is stable for at least two weeks at 2-4 °C.

Myosin-3 Polyclonal Antibody - Protein Information**Name** MYH3**Function**

Muscle contraction.

Cellular Location

Cytoplasm, myofibril. Note=Thick filaments of the myofibrils

Tissue Location

Expressed in fetal bone, thymus, placenta, heart, brain, and liver.

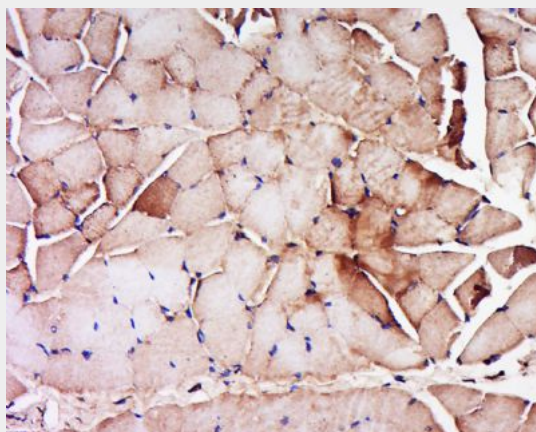
Myosin-3 Polyclonal Antibody - Protocols

Provided below are standard protocols that you may find useful for product applications.

- [Western Blot](#)
- [Blocking Peptides](#)
- [Dot Blot](#)

- [Immunohistochemistry](#)
- [Immunofluorescence](#)
- [Immunoprecipitation](#)
- [Flow Cytometry](#)
- [Cell Culture](#)

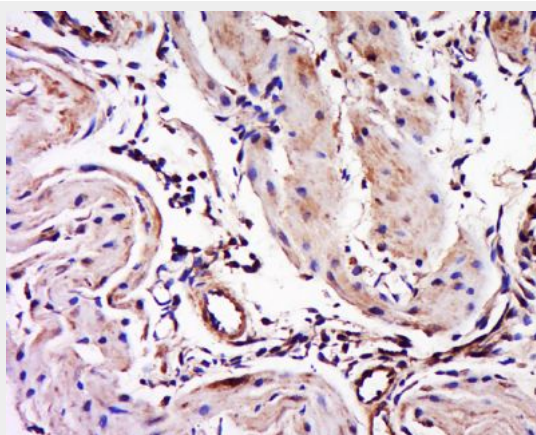
Myosin-3 Polyclonal Antibody - Images



Tissue/cell: Rat skeletal muscle; 4% Paraformaldehyde-fixed and paraffin-embedded;

Antigen retrieval: citrate buffer (0.01M, pH 6.0), Boiling bathing for 15min; Block endogenous peroxidase by 3% Hydrogen peroxide for 30min; Blocking buffer (normal goat serum,C-0005) at 37°C for 20 min;

Incubation: Anti-Myosin-3 Polyclonal Antibody, Unconjugated(bs-10905R) 1:200, overnight at 4°C, followed by conjugation to the secondary antibody(SP-0023) and DAB(C-0010) staining



Tissue/cell: Mouse placenta tissue; 4% Paraformaldehyde-fixed and paraffin-embedded;

Antigen retrieval: citrate buffer (0.01M, pH 6.0), Boiling bathing for 15min; Block endogenous peroxidase by 3% Hydrogen peroxide for 30min; Blocking buffer (normal goat serum,C-0005) at 37°C for 20 min;

Incubation: Anti-Myosin-3 Polyclonal Antibody, Unconjugated(bs-10905R) 1:200, overnight at 4°C, followed by conjugation to the secondary antibody(SP-0023) and DAB(C-0010) staining