

CCBL1 Polyclonal Antibody
Purified Rabbit Polyclonal Antibody (Pab)
Catalog # AP54327**Specification****CCBL1 Polyclonal Antibody - Product Information**

Application	WB, IHC-P, IHC-F, IF, ICC, E
Primary Accession	Q16773
Host	Rabbit
Clonality	Polyclonal
Calculated MW	48 KDa
Physical State	Liquid
Immunogen	KLH conjugated synthetic peptide derived from human CCBL1
Epitope Specificity	201-300/422
Isotype	IgG
Purity	
affinity purified by Protein A	
Buffer	0.01M TBS (pH7.4) with 1% BSA, 0.02% Proclin300 and 50% Glycerol.
SUBCELLULAR LOCATION	Cytoplasm.
SIMILARITY	Belongs to the class-I pyridoxal-phosphate-dependent aminotransferase family.
SUBUNIT	Homodimer.
Important Note	This product as supplied is intended for research use only, not for use in human, therapeutic or diagnostic applications.

Background Descriptions

This gene encodes a cytosolic enzyme that is responsible for the metabolism of cysteine conjugates of certain halogenated alkenes and alkanes. This metabolism can form reactive metabolites leading to nephrotoxicity and neurotoxicity. Increased levels of this enzyme have been linked to schizophrenia. Multiple transcript variants that encode different isoforms have been identified for this gene. [provided by RefSeq, Jul 2008]

CCBL1 Polyclonal Antibody - Additional Information**Gene ID 883****Other Names**

Kynurenine--oxoglutarate transaminase 1, 2.6.1.7, Cysteine-S-conjugate beta-lyase, 4.4.1.13, Glutamine transaminase K, GTK, Glutamine--phenylpyruvate transaminase, 2.6.1.64, Kynurenine aminotransferase 1 {ECO:0000312|HGNC:HGNC:1564}, Kynurenine aminotransferase I, KATI, Kynurenine--oxoglutarate transaminase I, KYAT1 (http://www.genenames.org/cgi-bin/gene_symbol_report?hgnc_id=1564), CCBL1

Dilution

WB~~1:1000<br \>IHC-P~~N/A<br \>IHC-F~~N/A<br \>IF~~1:50~200<br \>ICC~~N/A<br \>E~~N/A

Storage

Store at -20 °C for one year. Avoid repeated freeze/thaw cycles. When reconstituted in sterile pH 7.4 0.01M PBS or diluent of antibody the antibody is stable for at least two weeks at 2-4 °C.

CCBL1 Polyclonal Antibody - Protein Information

Name KYAT1 ([HGNC:1564](#))

Synonyms CCBL1

Function

Catalyzes the irreversible transamination of the L-tryptophan metabolite L-kynurenine to form kynurenic acid (KA), an intermediate in the tryptophan catabolic pathway which is also a broad spectrum antagonist of the three ionotropic excitatory amino acid receptors among others (PubMed:19338303, PubMed:28097769). Also metabolizes the cysteine conjugates of certain halogenated alkenes and alkanes to form reactive metabolites (PubMed:7883047). Catalyzes the beta-elimination of S-conjugates and Se-conjugates of L-(seleno)cysteine, resulting in the cleavage of the C-S or C-Se bond (PubMed:7883047).

Cellular Location

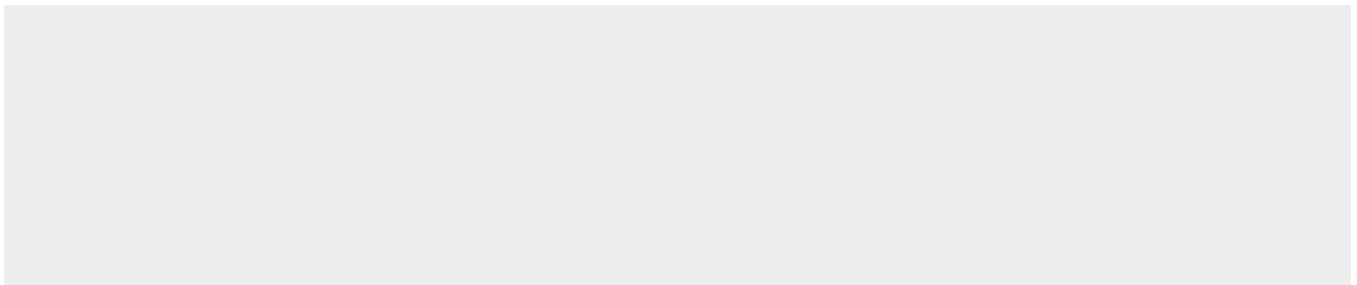
Cytoplasm, cytosol.

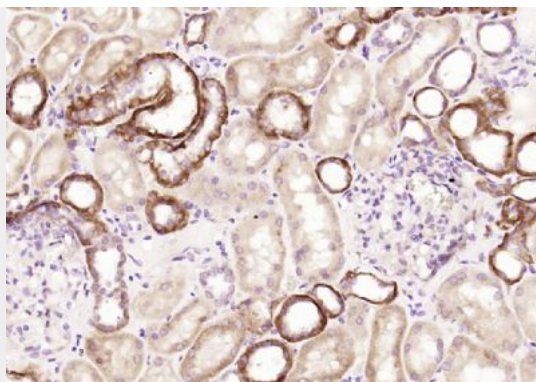
CCBL1 Polyclonal Antibody - Protocols

Provided below are standard protocols that you may find useful for product applications.

- [Western Blot](#)
- [Blocking Peptides](#)
- [Dot Blot](#)
- [Immunohistochemistry](#)
- [Immunofluorescence](#)
- [Immunoprecipitation](#)
- [Flow Cytometry](#)
- [Cell Culture](#)

CCBL1 Polyclonal Antibody - Images





Paraformaldehyde-fixed, paraffin embedded (Human kidney); Antigen retrieval by boiling in sodium citrate buffer (pH6.0) for 15min; Block endogenous peroxidase by 3% hydrogen peroxide for 20 minutes; Blocking buffer (normal goat serum) at 37°C for 30min; Antibody incubation with (CCBL1) Polyclonal Antibody, Unconjugated (bs-10939R) at 1:200 overnight at 4°C, followed by operating according to SP Kit(Rabbit) (sp-0023) instructions and DAB staining.