

**FAM71D Polyclonal Antibody**  
**Purified Rabbit Polyclonal Antibody (Pab)**  
**Catalog # AP54337****Specification****FAM71D Polyclonal Antibody - Product Information**

Application	WB, IHC-P, IHC-F, IF, ICC, E
Primary Accession	<a href="#">Q8N9W8</a>
Reactivity	Rat, Pig, Dog, Bovine
Host	Rabbit
Clonality	Polyclonal
Calculated MW	47 KDa
Physical State	Liquid
Immunogen	KLH conjugated synthetic peptide derived from human FAM71A
Epitope Specificity	1-100/422
Isotype	IgG
<b>Purity</b>	
affinity purified by Protein A	
Buffer	0.01M TBS (pH7.4) with 1% BSA, 0.02% Proclin300 and 50% Glycerol.
Important Note	This product as supplied is intended for research use only, not for use in human, therapeutic or diagnostic applications.

**FAM71D Polyclonal Antibody - Additional Information****Gene ID** 161142**Other Names**

Protein FAM71D, FAM71D, C14orf54

**Dilution**

<span class = "dilution\_WB">WB~~1:1000</span><br \><span class = "dilution\_IHC-P">IHC-P~~N/A</span><br \><span class = "dilution\_IHC-F">IHC-F~~N/A</span><br \><span class = "dilution\_IF">IF~~1:50~200</span><br \><span class = "dilution\_ICC">ICC~~N/A</span><br \><span class = "dilution\_E">E~~N/A</span>

**Storage**

Store at -20 °C for one year. Avoid repeated freeze/thaw cycles. When reconstituted in sterile pH 7.4 0.01M PBS or diluent of antibody the antibody is stable for at least two weeks at 2-4 °C.

**FAM71D Polyclonal Antibody - Protein Information****Name** GARIN2 ([HGNC:20101](#))

**Synonyms** C14orf54, FAM71D

**Function**

Seems to play a role in sperm motility.

**Cellular Location**

Cell projection, cilium, flagellum {ECO:0000250|UniProtKB:D3YV92}. Note=In mature sperm, localizes in the midpiece of flagella. {ECO:0000250|UniProtKB:D3YV92}

**Tissue Location**

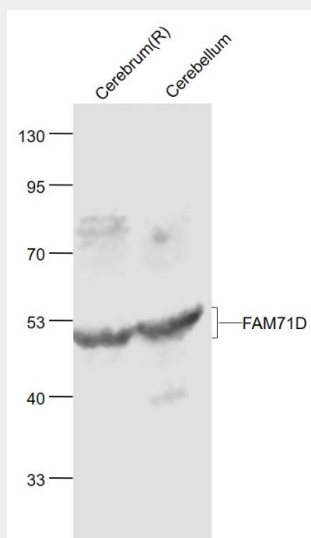
Expressed in spermatozoa (at protein level).

**FAM71D Polyclonal Antibody - Protocols**

Provided below are standard protocols that you may find useful for product applications.

- [Western Blot](#)
- [Blocking Peptides](#)
- [Dot Blot](#)
- [Immunohistochemistry](#)
- [Immunofluorescence](#)
- [Immunoprecipitation](#)
- [Flow Cytometry](#)
- [Cell Culture](#)

**FAM71D Polyclonal Antibody - Images**



**Sample:**

Cerebrum(Rat) Lysate at 40 ug

Cerebrum(Mouse) Lysate at 40 ug

Primary: Anti-FAM71D (bs-11008R) at 1/1000 dilution

Secondary: IRDye800CW Goat Anti-Rabbit IgG at 1/20000 dilution

Predicted band size: 50 kD

Observed band size: 50 kD