

**SHCBP1 Antibody (C-term)**  
**Affinity Purified Rabbit Polyclonal Antibody (Pab)**  
**Catalog # AP5433b****Specification**

---

**SHCBP1 Antibody (C-term) - Product Information**

Application	FC, IHC-P, WB,E
Primary Accession	<a href="#">Q8NEM2</a>
Other Accession	<a href="#">Q9Z179</a> , <a href="#">NP_079021.3</a>
Reactivity	Human
Predicted	Mouse
Host	Rabbit
Clonality	Polyclonal
Isotype	Rabbit IgG
Calculated MW	75690
Antigen Region	500-528

**SHCBP1 Antibody (C-term) - Additional Information****Gene ID** 79801**Other Names**

SHC SH2 domain-binding protein 1, SHCBP1

**Target/Specificity**

This SHCBP1 antibody is generated from rabbits immunized with a KLH conjugated synthetic peptide between 500-528 amino acids from the C-terminal region of human SHCBP1.

**Dilution**

FC~~1:10~50

IHC-P~~1:50~100

WB~~1:1000

E~~Use at an assay dependent concentration.

**Format**

Purified polyclonal antibody supplied in PBS with 0.09% (W/V) sodium azide. This antibody is purified through a protein A column, followed by peptide affinity purification.

**Storage**

Maintain refrigerated at 2-8°C for up to 2 weeks. For long term storage store at -20°C in small aliquots to prevent freeze-thaw cycles.

**Precautions**

SHCBP1 Antibody (C-term) is for research use only and not for use in diagnostic or therapeutic procedures.

**SHCBP1 Antibody (C-term) - Protein Information**

**Name** SHCBP1

**Function** May play a role in signaling pathways governing cellular proliferation, cell growth and differentiation. May be a component of a novel signaling pathway downstream of Shc. Acts as a positive regulator of FGF signaling in neural progenitor cells.

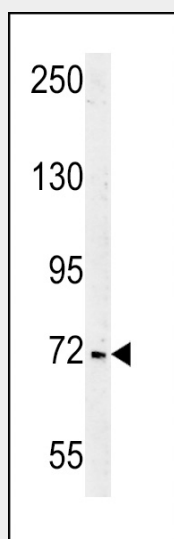
**Cellular Location**

Midbody. Cytoplasm, cytoskeleton, spindle. Note=Displays weak localization to the spindle midzone in some early telophase cells and is concentrated at the midbody in late cytokinesis

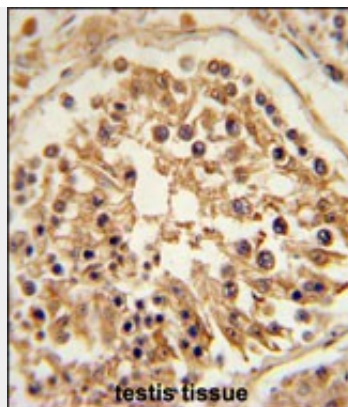
**SHCBP1 Antibody (C-term) - Protocols**

Provided below are standard protocols that you may find useful for product applications.

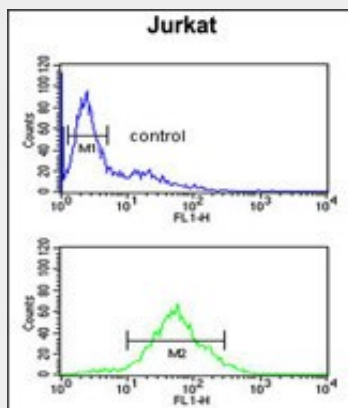
- [Western Blot](#)
- [Blocking Peptides](#)
- [Dot Blot](#)
- [Immunohistochemistry](#)
- [Immunofluorescence](#)
- [Immunoprecipitation](#)
- [Flow Cytometry](#)
- [Cell Culture](#)

**SHCBP1 Antibody (C-term) - Images**

SHCBP1 Antibody (C-term)(Cat. #AP5433b) western blot analysis in Jurkat cell line lysates (35ug/lane). This demonstrates the SHCBP1 antibody detected the SHCBP1 protein (arrow).



SHCBP1 Antibody (C-term) (Cat. #AP5433b) immunohistochemistry analysis in formalin fixed and paraffin embedded human testis tissue followed by peroxidase conjugation of the secondary antibody and DAB staining. This data demonstrates the use of the SHCBP1 Antibody (C-term) for immunohistochemistry. Clinical relevance has not been evaluated.



SHCBP1 Antibody (C-term) (Cat. #AP5433b) flow cytometric analysis of Jurkat cells (bottom histogram) compared to a negative control cell (top histogram). FITC-conjugated goat-anti-rabbit secondary antibodies were used for the analysis.

#### SHCBP1 Antibody (C-term) - References

Ewing, R.M., et al. Mol. Syst. Biol. 3, 89 (2007) :  
Beausoleil, S.A., et al. Nat. Biotechnol. 24(10):1285-1292(2006)  
Beausoleil, S.A., et al. Proc. Natl. Acad. Sci. U.S.A. 101(33):12130-12135(2004)  
Obuse, C., et al. Genes Cells 9(2):105-120(2004)  
Schmandt, R., et al. Oncogene 18(10):1867-1879(1999)  
Robertson, N.G., et al. Genomics 23(1):42-50(1994)

#### SHCBP1 Antibody (C-term) - Citations

- [EGF-induced nuclear localization of SHCBP1 activates  \$\beta\$ -catenin signaling and promotes cancer progression.](#)