

STAU2 Polyclonal Antibody
Purified Rabbit Polyclonal Antibody (Pab)
Catalog # AP54351**Specification**

STAU2 Polyclonal Antibody - Product Information

Application	IHC-P
Primary Accession	O9NUL3
Reactivity	Rat, Dog
Host	Rabbit
Clonality	Polyclonal
Calculated MW	62608

STAU2 Polyclonal Antibody - Additional Information**Gene ID** 27067**Other Names**

Double-stranded RNA-binding protein Staufen homolog 2, STAU2

Format

0.01M TBS(pH7.4), 0.09% (W/V) sodium azide and 50% Glyce

Storage

Store at -20 °C for one year. Avoid repeated freeze/thaw cycles. When reconstituted in sterile pH 7.4 0.01M PBS or diluent of antibody the antibody is stable for at least two weeks at 2-4 °C.

STAU2 Polyclonal Antibody - Protein Information**Name** STAU2**Function**

RNA-binding protein required for the microtubule-dependent transport of neuronal RNA from the cell body to the dendrite. As protein synthesis occurs within the dendrite, the localization of specific mRNAs to dendrites may be a prerequisite for neurite outgrowth and plasticity at sites distant from the cell body (By similarity).

Cellular Location

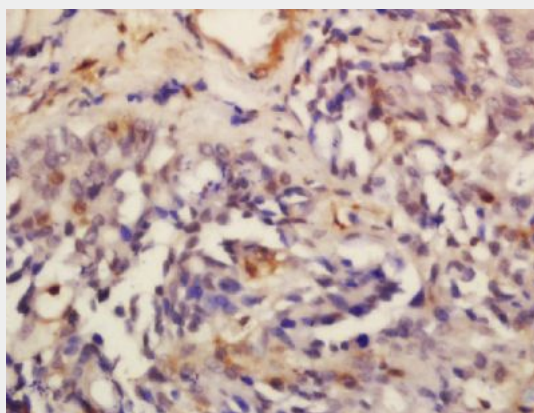
Cytoplasm. Nucleus. Nucleus, nucleolus. Endoplasmic reticulum. Note=Shuttles between the nucleolus, nucleus and the cytoplasm. Nuclear export of isoform 1 is independent of XPO1/CRM1 and requires the exportin XPO5. Nuclear export of isoform 2 and isoform 3 can occur by both XPO1/CRM1-dependent and XPO1/CRM1-independent pathways. Found in large cytoplasmic ribonucleoprotein (RNP) granules which are present in the actin rich regions of myelinating processes and associated with microtubules, polysomes and the endoplasmic reticulum. Also recruited to stress granules (SGs) upon inhibition of translation or oxidative stress. These structures are thought to harbor housekeeping mRNAs when translation is aborted (By similarity)

STAU2 Polyclonal Antibody - Protocols

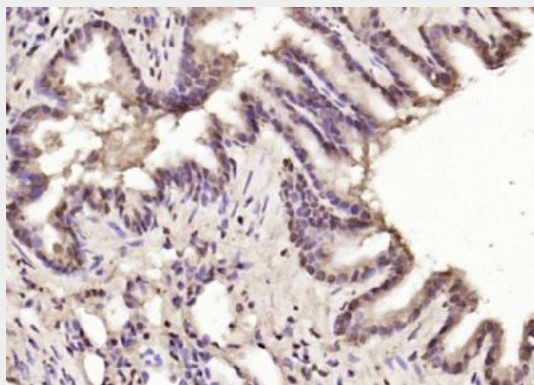
Provided below are standard protocols that you may find useful for product applications.

- [Western Blot](#)
- [Blocking Peptides](#)
- [Dot Blot](#)
- [Immunohistochemistry](#)
- [Immunofluorescence](#)
- [Immunoprecipitation](#)
- [Flow Cytometry](#)
- [Cell Culture](#)

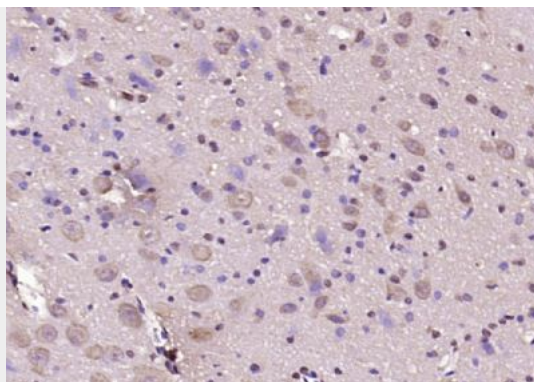
STAU2 Polyclonal Antibody - Images



Tissue/cell: human gastric carcinoma; 4% Paraformaldehyde-fixed and paraffin-embedded;
Antigen retrieval: citrate buffer (0.01M, pH 6.0), Boiling bathing for 15min; Block endogenous peroxidase by 3% Hydrogen peroxide for 30min; Blocking buffer (normal goat serum,C-0005) at 37°C for 20 min;
Incubation: Anti-STAU2 Polyclonal Antibody, Unconjugated(bs-11031R) 1:200, overnight at 4°C, followed by conjugation to the secondary antibody(SP-0023) and DAB(C-0010) staining



Paraformaldehyde-fixed, paraffin embedded (rat lung); Antigen retrieval by boiling in sodium citrate buffer (pH6.0) for 15min; Block endogenous peroxidase by 3% hydrogen peroxide for 20 minutes; Blocking buffer (normal goat serum) at 37°C for 30min; Antibody incubation with (STAU2) Polyclonal Antibody, Unconjugated (bs-11031R) at 1:200 overnight at 4°C, followed by operating according to SP Kit(Rabbit) (sp-0023) instructions and DAB staining.



Paraformaldehyde-fixed, paraffin embedded (rat brain); Antigen retrieval by boiling in sodium citrate buffer (pH6.0) for 15min; Block endogenous peroxidase by 3% hydrogen peroxide for 20 minutes; Blocking buffer (normal goat serum) at 37°C for 30min; Antibody incubation with (STAU2) Polyclonal Antibody, Unconjugated (bs-11031R) at 1:200 overnight at 4°C, followed by operating according to SP Kit(Rabbit) (sp-0023) instructions and DAB staining.