

PCDH8 Polyclonal Antibody
Purified Rabbit Polyclonal Antibody (Pab)
Catalog # AP54382**Specification****PCDH8 Polyclonal Antibody - Product Information**

Application	WB, IHC-P, IHC-F, IF, ICC, E
Primary Accession	O95206
Reactivity	Rat, Pig, Chimpanzee, Bovine
Host	Rabbit
Clonality	Polyclonal
Calculated MW	113019

PCDH8 Polyclonal Antibody - Additional Information**Gene ID** 5100**Other Names**

Protocadherin-8, Arcadlin, PCDH8

Dilution

WB~~1:1000<br \>IHC-P~~N/A<br \>IHC-F~~N/A<br \>IF~~1:50~200<br \>ICC~~N/A<br \>E~~N/A

Format

0.01M TBS(pH7.4), 0.09% (W/V) sodium azide and 50% Glyce

Storage

Store at -20 °C for one year. Avoid repeated freeze/thaw cycles. When reconstituted in sterile pH 7.4 0.01M PBS or diluent of antibody the antibody is stable for at least two weeks at 2-4 °C.

PCDH8 Polyclonal Antibody - Protein Information**Name** PCDH8**Function**

Calcium-dependent cell-adhesion protein (By similarity). May play a role in activity-induced synaptic reorganization underlying long term memory (By similarity). Could be involved in CDH2 internalization through TAOK2/p38 MAPK pathway. In hippocampal neurons, may play a role in the down-regulation of dendritic spines, maybe through its action on CDH2 endocytosis (By similarity).

Cellular Location

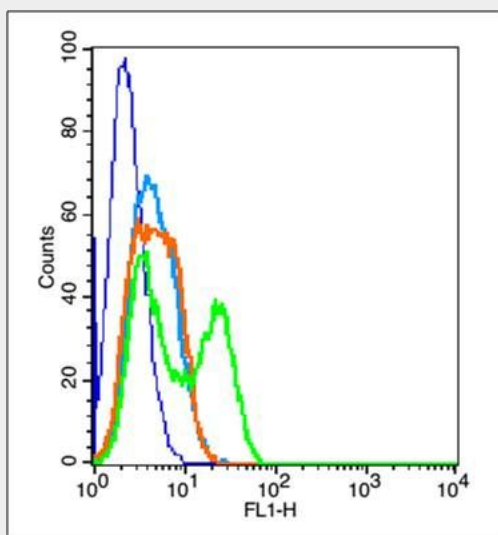
Cell membrane; Single-pass type I membrane protein. Cell projection, dendrite. Presynaptic cell membrane. Postsynaptic cell membrane Note=Also expressed in neuronal cell bodies. Localized to excitatory, but not with inhibitory, synapses.

PCDH8 Polyclonal Antibody - Protocols

Provided below are standard protocols that you may find useful for product applications.

- [Western Blot](#)
- [Blocking Peptides](#)
- [Dot Blot](#)
- [Immunohistochemistry](#)
- [Immunofluorescence](#)
- [Immunoprecipitation](#)
- [Flow Cytometry](#)
- [Cell Culture](#)

PCDH8 Polyclonal Antibody - Images

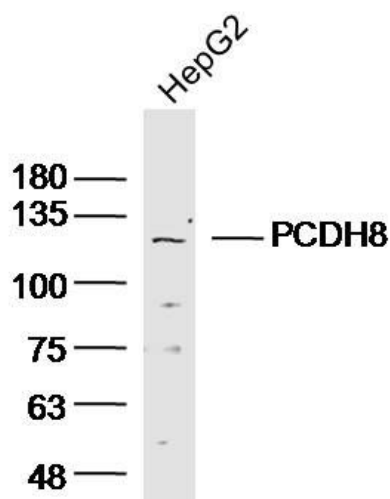


Blank control (blue line): U 2OS (fixed with 2% paraformaldehyde (10 min)).

Primary Antibody (green line): Rabbit Anti-PCDH8 antibody (bs-11114R), Dilution: 1 µg /10⁶ cells;

Isotype Control Antibody (orange line): Rabbit IgG .

Secondary Antibody (white blue line): Goat anti-rabbit IgG-FITC, Dilution: 1 µg /test.



Sample: HepG2 (Human) cell Lysate at 40 ug
Primary: Anti-PCDH8(bs-11114R) at 1/300 dilution
Secondary: IRDye800CW Goat Anti-Rabbit IgG at 1/20000 dilution
Predicted band size: 110kD
Observed band size: 110kD