

**MRF/C11orf9 Polyclonal Antibody**  
**Purified Rabbit Polyclonal Antibody (Pab)**  
**Catalog # AP54419****Specification****MRF/C11orf9 Polyclonal Antibody - Product Information**

Application	WB, IHC-P, IHC-F, IF, ICC, E
Primary Accession	<a href="#">O9Y2G1</a>
Reactivity	Rat, Pig, Dog, Bovine
Host	Rabbit
Clonality	Polyclonal
Calculated MW	124 KDa
Physical State	Liquid
Immunogen	KLH conjugated synthetic peptide derived from human MRF
Epitope Specificity	401-500/1151
Isotype	IgG
<b>Purity</b>	
affinity purified by Protein A	
Buffer	0.01M TBS (pH7.4) with 1% BSA, 0.02% Proclin300 and 50% Glycerol.
SUBCELLULAR LOCATION	Membrane. Nucleus.
SIMILARITY	Belongs to the MRF family. Contains 1 NDT80 DNA-binding domain.
SUBUNIT	Belongs to the MRF family. Contains 1 NDT80 DNA-binding domain.
Important Note	This product as supplied is intended for research use only, not for use in human, therapeutic or diagnostic applications.

**Background Descriptions**

C11orf9 (chromosome 11 open reading frame 9), also known as MRF (myelin gene regulatory factor), Ndt80, KIAA0954 or MGC10781, is a 1,151 amino acid single-pass membrane protein that localizes to nucleus. A member of the MRF family, C11orf9 is expressed in the ARPE-19 cell line, brainstem, uterus and, to a lesser extent, in basal ganglion and liver. C11orf9 is weakly expressed in cerebellum and retina. C11orf9 contains one NDT80 DNA-binding domain and acts as a transcription factor that is required for expression of central nervous system (CNS) myelin genes such as MBP and MOG, thereby playing a central role in oligodendrocyte maturation and CNS myelination. C11orf9 exists as two alternatively spliced isoforms and is encoded by a gene located on human chromosome 11, which consists of approximately 135 million base pairs and 1,400 genes. Chromosome 11 makes up around 4% of human genomic DNA and is considered a gene and disease association dense chromosome.

**MRF/C11orf9 Polyclonal Antibody - Additional Information****Gene ID 745****Other Names**

Myelin regulatory factor, 3.4.-.-, Myelin gene regulatory factor, Myelin regulatory factor,

N-terminal, Myelin regulatory factor, C-terminal, MYRF, C11orf9, KIAA0954, MRF

**Target/Specificity**

Expressed in lung, ARPE-19 cell line, brainstem, uterus and, to a lesser extent, in basal ganglion and liver. Weakly expressed in cerebellum and retina.

**Dilution**

<span class = "dilution\_WB">WB~~1:1000</span><br \><span class = "dilution\_IHC-P">IHC-P~~N/A</span><br \><span class = "dilution\_IHC-F">IHC-F~~N/A</span><br \><span class = "dilution\_IF">IF~~1:50~200</span><br \><span class = "dilution\_ICC">ICC~~N/A</span><br \><span class = "dilution\_E">E~~N/A</span>

**Format**

0.01M TBS(pH7.4), 0.09% (W/V) sodium azide and 50% Glyce

**Storage**

Store at -20 °C for one year. Avoid repeated freeze/thaw cycles. When reconstituted in sterile pH 7.4 0.01M PBS or diluent of antibody the antibody is stable for at least two weeks at 2-4 °C.

**MRF/C11orf9 Polyclonal Antibody - Protein Information**

**Name** MYRF

**Synonyms** C11orf9, KIAA0954, MRF

**Function**

[Myelin regulatory factor]: Constitutes a precursor of the transcription factor. Mediates the autocatalytic cleavage that releases the Myelin regulatory factor, N-terminal component that specifically activates transcription of central nervous system (CNS) myelin genes (PubMed:<a href="http://www.uniprot.org/citations/23966832" target="\_blank">23966832</a>).

**Cellular Location**

[Myelin regulatory factor]: Endoplasmic reticulum membrane; Single-pass membrane protein  
[Myelin regulatory factor, C-terminal]: Endoplasmic reticulum membrane; Single- pass membrane protein

**Tissue Location**

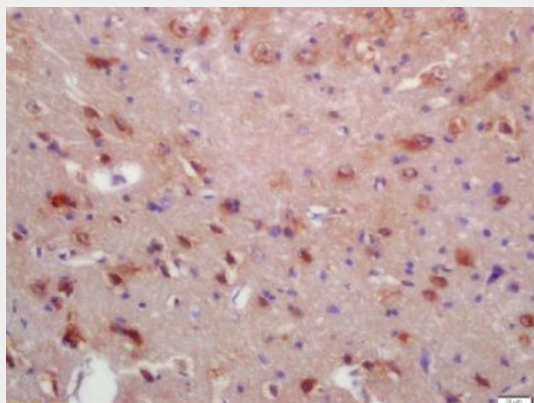
Expressed in lung, ARPE-19 cell line, brainstem, uterus and, to a lesser extent, in basal ganglion and liver. Weakly expressed in cerebellum and retina.

**MRF/C11orf9 Polyclonal Antibody - Protocols**

Provided below are standard protocols that you may find useful for product applications.

- [Western Blot](#)
- [Blocking Peptides](#)
- [Dot Blot](#)
- [Immunohistochemistry](#)
- [Immunofluorescence](#)
- [Immunoprecipitation](#)
- [Flow Cytometry](#)
- [Cell Culture](#)

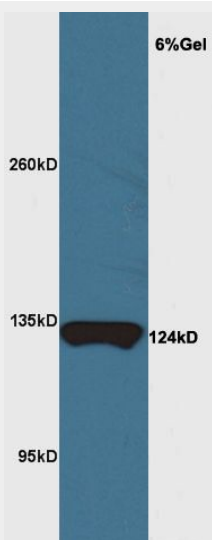
## MRF/C11orf9 Polyclonal Antibody - Images



Tissue/cell: rat brain tissue; 4% Paraformaldehyde-fixed and paraffin-embedded;

Antigen retrieval: citrate buffer ( 0.01M, pH 6.0 ), Boiling bathing for 15min; Block endogenous peroxidase by 3% Hydrogen peroxide for 30min; Blocking buffer (normal goat serum,C-0005) at 37°C for 20 min;

Incubation: Anti-MRF/C11orf9 Polyclonal Antibody, Unconjugated(bs-11191R) 1:200, overnight at 4°C, followed by conjugation to the secondary antibody(SP-0023) and DAB(C-0010) staining



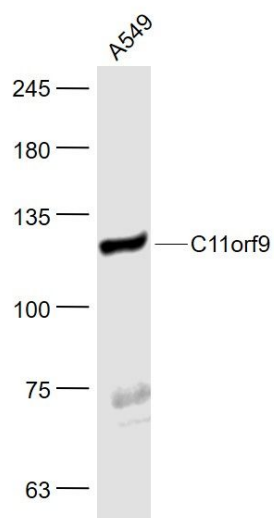
Sample: Brain (Mouse) Lysate at 40 ug

Primary: Anti-MRF/C11orf9 (bs-11191R) at 1/300 dilution

Secondary: HRP conjugated Goat-Anti-rabbit IgG (bs-0295G-HRP) at 1/5000 dilution

Predicted band size: 124 kD

Observed band size: 124 kD



**Sample:**

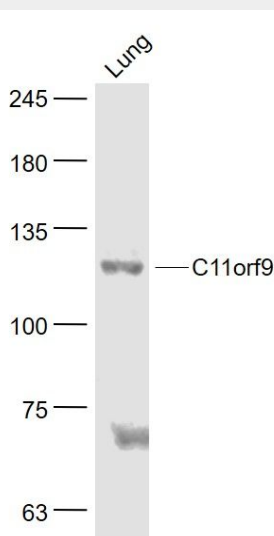
A549(Human) Cell Lysate at 30 ug

Primary: Anti- MRF/C11orf9 (bs-11191R) at 1/1000 dilution

Secondary: IRDye800CW Goat Anti-Rabbit IgG at 1/20000 dilution

Predicted band size: 124 kD

Observed band size: 124 kD



**Sample:**

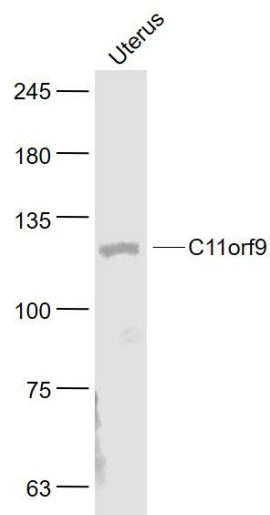
Lung (Mouse) Lysate at 40 ug

Primary: Anti- MRF/C11orf9 (bs-11191R) at 1/1000 dilution

Secondary: IRDye800CW Goat Anti-Rabbit IgG at 1/20000 dilution

Predicted band size: 124 kD

Observed band size: 124 kD

**Sample:**

Uterus (Mouse) Lysate at 40 ug

Primary: Anti- MRF/C11orf9 (bs-11191R) at 1/1000 dilution

Secondary: IRDye800CW Goat Anti-Rabbit IgG at 1/20000 dilution

Predicted band size: 124 kD

Observed band size: 124 kD