

LSP1 Antibody (Center)
Affinity Purified Rabbit Polyclonal Antibody (Pab)
Catalog # AP5442c

Specification

LSP1 Antibody (Center) - Product Information

Application	FC, IHC-P, WB,E
Primary Accession	P33241
Other Accession	NP_002330
Reactivity	Human
Host	Rabbit
Clonality	Polyclonal
Isotype	Rabbit IgG
Calculated MW	37192
Antigen Region	108-134

LSP1 Antibody (Center) - Additional Information

Gene ID 4046

Other Names

Lymphocyte-specific protein 1, 47 kDa actin-binding protein, 52 kDa phosphoprotein, pp52, Lymphocyte-specific antigen WP34, LSP1, WP34

Target/Specificity

This LSP1 antibody is generated from rabbits immunized with a KLH conjugated synthetic peptide between 108-134 amino acids from the Central region of human LSP1.

Dilution

FC~~1:10~50
IHC-P~~1:50~100
WB~~1:8000
E~~Use at an assay dependent concentration.

Format

Purified polyclonal antibody supplied in PBS with 0.09% (W/V) sodium azide. This antibody is purified through a protein A column, followed by peptide affinity purification.

Storage

Maintain refrigerated at 2-8°C for up to 2 weeks. For long term storage store at -20°C in small aliquots to prevent freeze-thaw cycles.

Precautions

LSP1 Antibody (Center) is for research use only and not for use in diagnostic or therapeutic procedures.

LSP1 Antibody (Center) - Protein Information

Name LSP1

Synonyms WP34

Function May play a role in mediating neutrophil activation and chemotaxis.

Cellular Location

Cell membrane; Peripheral membrane protein; Cytoplasmic side

Tissue Location

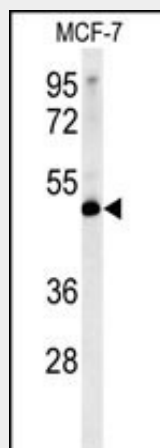
Activated T-lymphocytes.

LSP1 Antibody (Center) - Protocols

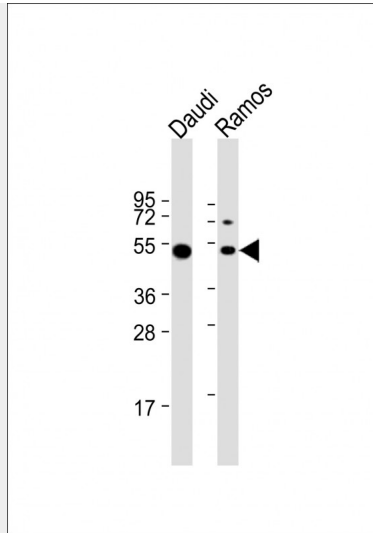
Provided below are standard protocols that you may find useful for product applications.

- [Western Blot](#)
- [Blocking Peptides](#)
- [Dot Blot](#)
- [Immunohistochemistry](#)
- [Immunofluorescence](#)
- [Immunoprecipitation](#)
- [Flow Cytometry](#)
- [Cell Culture](#)

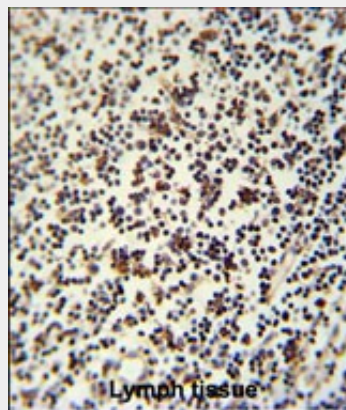
LSP1 Antibody (Center) - Images



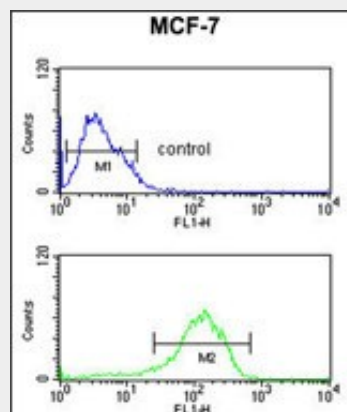
LSP1 Antibody (Center) (Cat.#AP5442c) western blot analysis in MCF-7 cell line lysates (35ug/lane). This demonstrates the LSP1 antibody detected the LSP1 protein (arrow).



All lanes : Anti-LSP1 Antibody (Center) at 1:8000 dilution Lane 1: Daudi whole cell lysate Lane 2: Ramos whole cell lysate Lysates/proteins at 20 µg per lane. Secondary Goat Anti-Rabbit IgG, (H+L), Peroxidase conjugated at 1/10000 dilution. Predicted band size : 37 kDa Blocking/Dilution buffer: 5% NFDN/TBST.



LSP1 Antibody (Center) (Cat. #AP5442c) immunohistochemistry analysis in formalin fixed and paraffin embedded human lymph tissue followed by peroxidase conjugation of the secondary antibody and DAB staining. This data demonstrates the use of the LSP1 Antibody (Center) for immunohistochemistry. Clinical relevance has not been evaluated.



LSP1 Antibody (Center) (Cat. #AP5442c) flow cytometric analysis of MCF-7 cells (bottom histogram) compared to a negative control cell (top histogram).FITC-conjugated goat-anti-rabbit secondary antibodies were used for the analysis.

LSP1 Antibody (Center) - Background

LSP1 is an intracellular F-actin binding protein. The protein is expressed in lymphocytes, neutrophils, macrophages, and endothelium and may regulate neutrophil motility, adhesion to fibrinogen matrix proteins, and transendothelial migration. Alternative splicing results in multiple transcript variants encoding different isoforms.

LSP1 Antibody (Center) - References

Davila, S., et al. Genes Immun. (2010)
Odefrey, F., et al. Cancer Res. 70(4):1449-1458(2010)
Bhatti, P., et al. Radiat. Res. 173(2):214-224(2010)
Tamimi, R.M., et al. Cancer Causes Control (2010)