

FGFBP2 Polyclonal Antibody
Purified Rabbit Polyclonal Antibody (Pab)
Catalog # AP54445**Specification****FGFBP2 Polyclonal Antibody - Product Information**

Application	IHC-P, IHC-F, IF, ICC, E
Primary Accession	O9BYJ0
Host	Rabbit
Clonality	Polyclonal
Calculated MW	23 KDa
Physical State	Liquid
Immunogen	KLH conjugated synthetic peptide derived from human FGFBP2/KSP37
Epitope Specificity	121-220/223
Isotype	IgG
Purity	
affinity purified by Protein A	
Buffer	0.01M TBS (pH7.4) with 1% BSA, 0.02% Proclin300 and 50% Glycerol.
SUBCELLULAR LOCATION	Secreted. extracellular space.
SIMILARITY	Belongs to the fibroblast growth factor-binding protein family.
Important Note	This product as supplied is intended for research use only, not for use in human, therapeutic or diagnostic applications.

Background Descriptions

KSP37 is a 223 amino acid protein that is secreted into the extracellular space and belongs to the fibroblast growth factor-binding protein family. Expressed in serum, as well as in cytotoxic T lymphocytes and peripheral leukocytes, KSP37 is thought to be involved in lymphocyte-mediated immunity, possibly playing a role in the development of asthma. The gene encoding KSP37 maps to human chromosome 4, which encodes nearly 6% of the human genome and has the largest gene deserts (regions of the genome with no protein encoding genes) of all of the human chromosomes. Defects in some of the genes located on chromosome 4 are associated with Huntington's disease, Ellis-van Creveld syndrome, methylmalonic acidemia and polycystic kidney disease.

FGFBP2 Polyclonal Antibody - Additional Information**Gene ID** 83888**Other Names**

Fibroblast growth factor-binding protein 2, FGF-BP2, FGF-binding protein 2, FGFBP-2, 37 kDa killer-specific secretory protein, Ksp37, HBp17-related protein, HBp17-RP, FGFBP2, KSP37

Target/Specificity

Expressed in serum, peripheral leukocytes and cytotoxic T lymphocytes, but not in granulocytes and monocytes (at protein level).

Dilution

IHC-P ~ ~ N/A
IHC-F ~ ~ N/A
IF ~ ~ 1:50 ~ 200
ICC ~ ~ N/A
E ~ ~ N/A

Format

0.01M TBS(pH7.4), 0.09% (W/V) sodium azide and 50% Glyce

Storage

Store at -20 °C for one year. Avoid repeated freeze/thaw cycles. When reconstituted in sterile pH 7.4 0.01M PBS or diluent of antibody the antibody is stable for at least two weeks at 2-4 °C.

FGFBP2 Polyclonal Antibody - Protein Information

Name FGFBP2

Synonyms KSP37

Cellular Location

Secreted, extracellular space

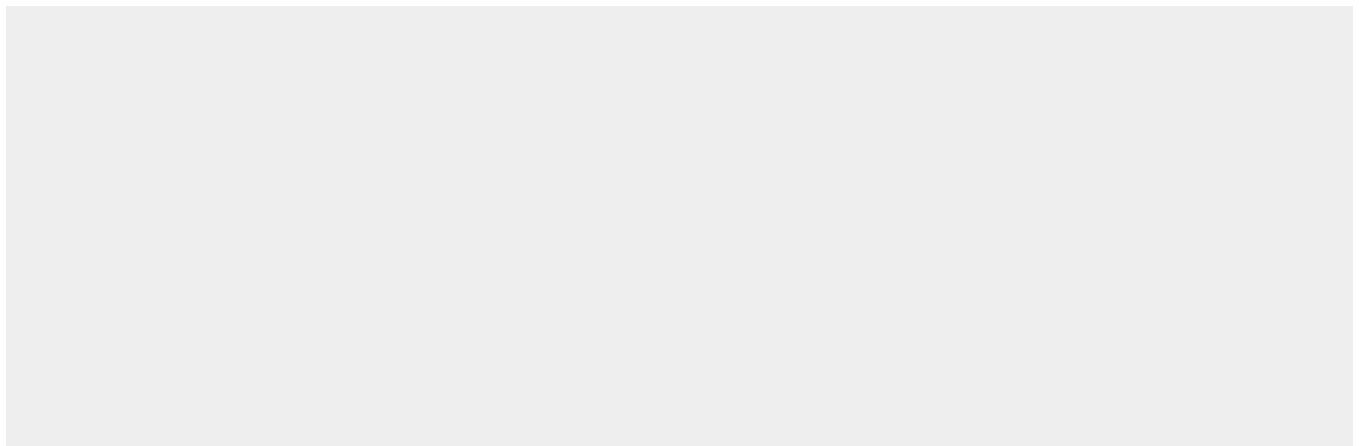
Tissue Location

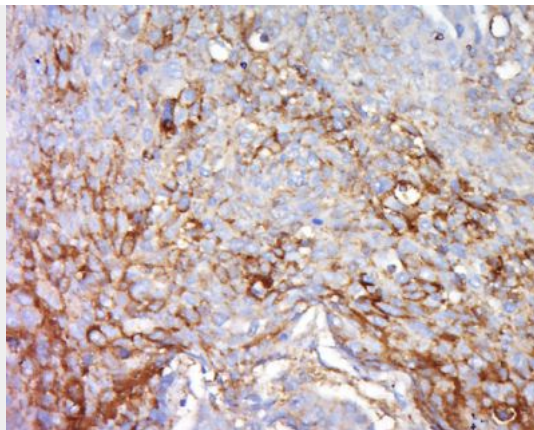
Expressed in serum, peripheral leukocytes and cytotoxic T-lymphocytes, but not in granulocytes and monocytes (at protein level).

FGFBP2 Polyclonal Antibody - Protocols

Provided below are standard protocols that you may find useful for product applications.

- [Western Blot](#)
- [Blocking Peptides](#)
- [Dot Blot](#)
- [Immunohistochemistry](#)
- [Immunofluorescence](#)
- [Immunoprecipitation](#)
- [Flow Cytometry](#)
- [Cell Culture](#)

FGFBP2 Polyclonal Antibody - Images



Tissue/cell: human lung carcinoma; 4% Paraformaldehyde-fixed and paraffin-embedded;

Antigen retrieval: citrate buffer (0.01M, pH 6.0), Boiling bathing for 15min; Block endogenous peroxidase by 3% Hydrogen peroxide for 30min; Blocking buffer (normal goat serum,C-0005) at 37°C for 20 min;

Incubation: Anti-FGFBP2 Polyclonal Antibody, Unconjugated(bs-R) 1:500, overnight at 4°C, followed by conjugation to the secondary antibody(SP-0023) and DAB(C-0010) staining