

**MAGI1 Polyclonal Antibody**  
**Purified Rabbit Polyclonal Antibody (Pab)**  
**Catalog # AP54467****Specification****MAGI1 Polyclonal Antibody - Product Information**

Application	WB, IHC-P, IHC-F, IF, ICC, E
Primary Accession	<a href="#">O96QZ7</a>
Reactivity	Rat, Pig, Dog, Bovine
Host	Rabbit
Clonality	Polyclonal
Calculated MW	164581

**MAGI1 Polyclonal Antibody - Additional Information****Gene ID** 9223**Other Names**

Membrane-associated guanylate kinase, WW and PDZ domain-containing protein 1, Atrophin-1-interacting protein 3, AIP-3, BAI1-associated protein 1, BAP-1, Membrane-associated guanylate kinase inverted 1, MAGI-1, Trinucleotide repeat-containing gene 19 protein, WW domain-containing protein 3, WWP3, MAGI1, AIP3, BAIAP1, BAP1, TNRC19

**Dilution**

<span class="dilution\_WB">WB~~1:1000</span><br \><span class="dilution\_IHC-P">IHC-P~~N/A</span><br \><span class="dilution\_IHC-F">IHC-F~~N/A</span><br \><span class="dilution\_IF">IF~~1:50~200</span><br \><span class="dilution\_ICC">ICC~~N/A</span><br \><span class="dilution\_E">E~~N/A</span>

**Format**

0.01M TBS(pH7.4), 0.09% (W/V) sodium azide and 50% Glyce

**Storage**

Store at -20 °C for one year. Avoid repeated freeze/thaw cycles. When reconstituted in sterile pH 7.4 0.01M PBS or diluent of antibody the antibody is stable for at least two weeks at 2-4 °C.

**MAGI1 Polyclonal Antibody - Protein Information****Name** MAGI1**Synonyms** AIP3, BAIAP1, BAP1, TNRC19**Function**

Plays a role in coupling actin fibers to cell junctions in endothelial cells, via its interaction with AMOTL2 and CDH5 (By similarity). May regulate acid-induced ASIC3 currents by modulating its expression at the cell surface (By similarity).

**Cellular Location**

Cell junction, tight junction. Cell membrane; Peripheral membrane protein. Note=Localizes to epithelial cells tight junctions

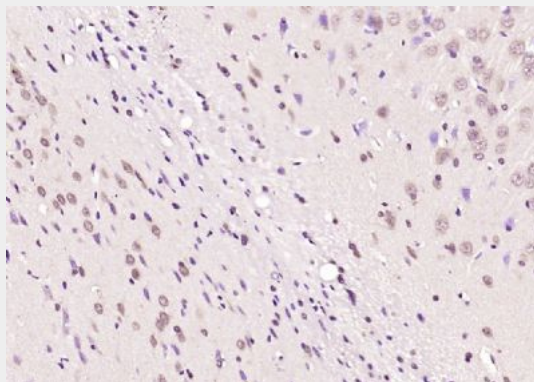
**Tissue Location**

Widely expressed with the exception of skeletal muscle. Isoform 1, isoform 2 and isoform 6 are highly expressed in colon, kidney, lung, liver, and pancreas. Isoform 5 is predominantly expressed in brain and heart. Isoform 3 and isoform 4 are highly expressed in pancreas and brain.

**MAGI1 Polyclonal Antibody - Protocols**

Provided below are standard protocols that you may find useful for product applications.

- [Western Blot](#)
- [Blocking Peptides](#)
- [Dot Blot](#)
- [Immunohistochemistry](#)
- [Immunofluorescence](#)
- [Immunoprecipitation](#)
- [Flow Cytometry](#)
- [Cell Culture](#)

**MAGI1 Polyclonal Antibody - Images**

Paraformaldehyde-fixed, paraffin embedded (rat brain); Antigen retrieval by boiling in sodium citrate buffer (pH6.0) for 15min; Block endogenous peroxidase by 3% hydrogen peroxide for 20 minutes; Blocking buffer (normal goat serum) at 37°C for 30min; Antibody incubation with (MAGI1) Polyclonal Antibody, Unconjugated (bs-11352R) at 1:200 overnight at 4°C, followed by operating according to SP Kit(Rabbit) (sp-0023) instructions and DAB staining.