

Synaptogyrin 4 Polyclonal Antibody
Purified Rabbit Polyclonal Antibody (Pab)
Catalog # AP54474

Specification

Synaptogyrin 4 Polyclonal Antibody - Product Information

Application	WB, IHC-P, IHC-F, IF, ICC, E
Primary Accession	O95473
Reactivity	Rat
Host	Rabbit
Clonality	Polyclonal
Calculated MW	26 KDa
Physical State	Liquid
Immunogen	KLH conjugated synthetic peptide derived from human Synaptogyrin 4
Epitope Specificity	111-200/234
Isotype	IgG
Purity	
affinity purified by Protein A	
Buffer	0.01M TBS (pH7.4) with 1% BSA, 0.02% Proclin300 and 50% Glycerol.
SUBCELLULAR LOCATION	Membrane; Multi-pass membrane protein.
SIMILARITY	Belongs to the synaptogyrin family. Contains 1 MARVEL domain.
Important Note	This product as supplied is intended for research use only, not for use in human, therapeutic or diagnostic applications.

Background Descriptions

The synaptogyrin family of proteins are integral membrane proteins containing four transmembrane regions. Synaptogyrins are tyrosine-phosphorylated proteins with two neuronal (Synaptogyrins 1 and 3) and one ubiquitous (Synaptogyrin-2) isoform. Synaptophysin and synaptogyrin represent the major constituents of synaptic vesicles. The 26kDa protein Synaptogyrin-1 is associated with presynaptic vesicles in neuronal cells. Synaptogyrin-2, also known as Cellugyrin has a tyrosine phosphorylated C-terminal cytoplasmic tail, and is involved in the regulation of membrane traffic in non-neuronal cells. Synaptogyrin-3 is expressed mainly in brain and placenta. The SYNGR4 gene encodes for the 234 amino acid protein Synaptogyrin-4.

Synaptogyrin 4 Polyclonal Antibody - Additional Information

Gene ID 23546

Other Names

Synaptogyrin-4, SYNGR4

Dilution

WB~~1:1000<br \>IHC-P~~N/A<br \>IHC-F~~N/A<br \><span class

=IF~~1:50~200<br \>ICC~~N/A<br \>E~~N/A

Storage

Store at -20 °C for one year. Avoid repeated freeze/thaw cycles. When reconstituted in sterile pH 7.4 0.01M PBS or diluent of antibody the antibody is stable for at least two weeks at 2-4 °C.

Synaptogyrin 4 Polyclonal Antibody - Protein Information

Name SYNGR4

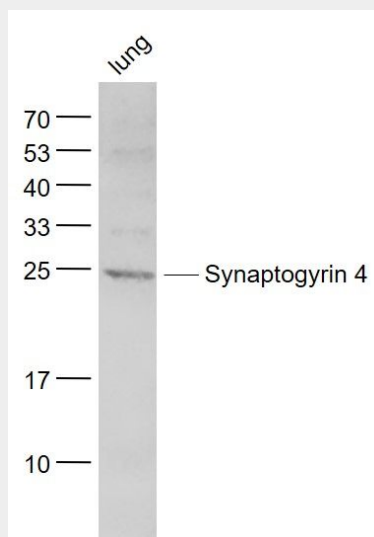
Cellular Location

Membrane; Multi-pass membrane protein.

Synaptogyrin 4 Polyclonal Antibody - Protocols

Provided below are standard protocols that you may find useful for product applications.

- [Western Blot](#)
- [Blocking Peptides](#)
- [Dot Blot](#)
- [Immunohistochemistry](#)
- [Immunofluorescence](#)
- [Immunoprecipitation](#)
- [Flow Cytometry](#)
- [Cell Culture](#)

Synaptogyrin 4 Polyclonal Antibody - Images**Sample:**

Lung (Mouse) Lysate at 40 ug

Primary: Anti- Synaptogyrin 4 (bs-11375R) at 1/1000 dilution

Secondary: IRDye800CW Goat Anti-Rabbit IgG at 1/20000 dilution

Predicted band size: 26 kD

Observed band size: 25 kD

