

## Synaptotagmin XII Polyclonal Antibody

### Purified Rabbit Polyclonal Antibody (Pab)

Catalog # AP54487

### Specification

### Synaptotagmin XII Polyclonal Antibody - Product Information

Application	WB, IHC-P, IHC-F, IF, ICC, E
Primary Accession	<a href="#">Q8IV01</a>
Reactivity	Rat, Pig, Dog
Host	Rabbit
Clonality	Polyclonal
Calculated MW	47 KDa
Physical State	Liquid
Immunogen	KLH conjugated synthetic peptide derived from human Synaptotagmin XII
Epitope Specificity	301-350/421
Isotype	IgG
<b>Purity</b>	
affinity purified by Protein A	
Buffer	0.01M TBS (pH7.4) with 1% BSA, 0.02% Proclin300 and 50% Glycerol.
SUBCELLULAR LOCATION	Cytoplasmic vesicle > secretory vesicle > synaptic vesicle membrane.
SIMILARITY	Belongs to the synaptotagmin family. Contains 2 C2 domains.
SUBUNIT	Homodimer. Can also form heterodimers
Important Note	This product as supplied is intended for research use only, not for use in human, therapeutic or diagnostic applications.

### Background Descriptions

This gene is a member of the synaptotagmin gene family and encodes a protein similar to other family members that mediate calcium-dependent regulation of membrane trafficking in synaptic transmission. Studies of the orthologous gene in rat have shown that the encoded protein selectively modulates spontaneous synaptic-vesicle exocytosis and may also be involved in regulating calcium independent secretion in nonneuronal cells. Alternative splicing results in multiple transcript variants. The gene has previously been referred to as synaptotagmin XI but has been renamed synaptotagmin XII to be standard with mouse and rat official nomenclature.

### Synaptotagmin XII Polyclonal Antibody - Additional Information

**Gene ID** 91683

#### Other Names

Synaptotagmin-12, SYT12

#### Dilution

<span class = "dilution\_WB">WB~~1:1000</span><br \><span class = "dilution\_IHC-P">IHC-P~~N/A</span><br \><span class =

=<span class="dilution\_IHC-F">IHC-F~~N/A</span><br \><span class="dilution\_IF">IF~~1:50~200</span><br \><span class="dilution\_ICC">ICC~~N/A</span><br \><span class="dilution\_E">E~~N/A</span>

### Storage

Store at -20 °C for one year. Avoid repeated freeze/thaw cycles. When reconstituted in sterile pH 7.4 0.01M PBS or diluent of antibody the antibody is stable for at least two weeks at 2-4 °C.

## Synaptotagmin XII Polyclonal Antibody - Protein Information

**Name** SYT12

### Function

Synaptic vesicle phosphoprotein that enhances spontaneous neurotransmitter release but does not effect induced neurotransmitter release (By similarity). Unlike other synaptotagmins, it does not bind Ca(2+) or phospholipids (By similarity). Essential for mossy-fiber long-term potentiation in the hippocampus (By similarity).

### Cellular Location

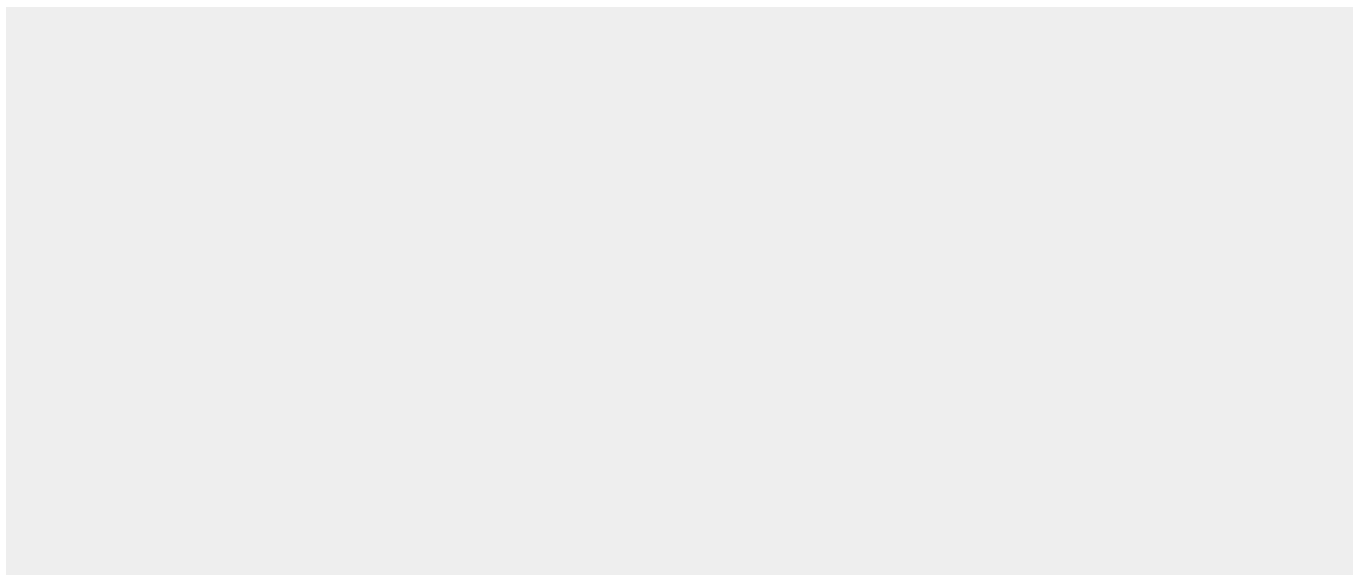
Cytoplasmic vesicle, secretory vesicle, synaptic vesicle membrane  
{ECO:0000250|UniProtKB:P97610}; Single-pass membrane protein

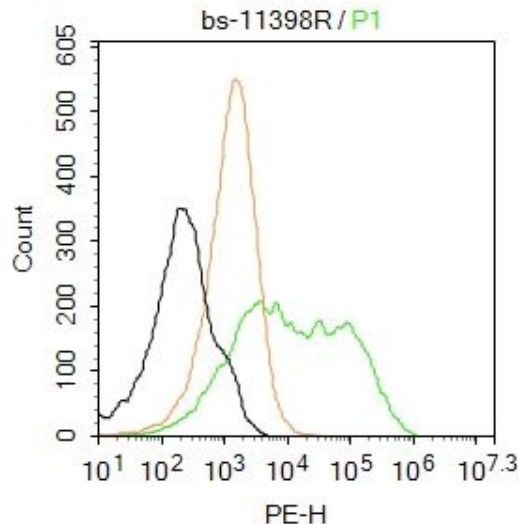
## Synaptotagmin XII Polyclonal Antibody - Protocols

Provided below are standard protocols that you may find useful for product applications.

- [Western Blot](#)
- [Blocking Peptides](#)
- [Dot Blot](#)
- [Immunohistochemistry](#)
- [Immunofluorescence](#)
- [Immunoprecipitation](#)
- [Flow Cytometry](#)
- [Cell Culture](#)

## Synaptotagmin XII Polyclonal Antibody - Images





Blank control:Hela.

Primary Antibody (green line): Rabbit Anti- Synaptotagmin XII antibody (bs-11398R)

Dilution: 2  $\mu$ g /10<sup>6</sup> cells;

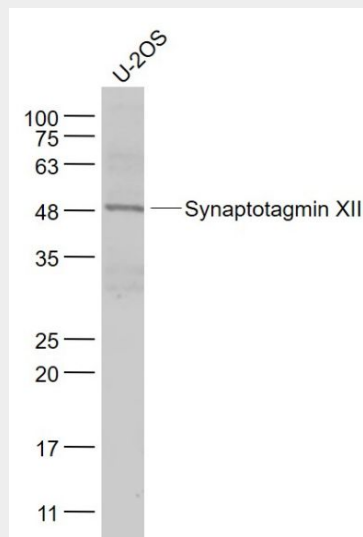
Isotype Control Antibody (orange line): Rabbit IgG .

Secondary Antibody : Goat anti-rabbit IgG-PE

Dilution: 1  $\mu$ g /test.

Protocol

The cells were incubated in 5%BSA to block non-specific protein-protein interactions for 30 min at room temperature .Cells stained with Primary Antibody for 30 min at room temperature. The secondary antibody used for 40 min at room temperature. Acquisition of 20,000 events was performed.



Sample:

U-2OS(Human) Cell Lysate at 30  $\mu$ g

Primary: Anti- Synaptotagmin XII (bs-11398R) at 1/1000 dilution

Secondary: IRDye800CW Goat Anti-Rabbit IgG at 1/20000 dilution

Predicted band size: 47 kD

Observed band size: 48 kD