

Progesterin Receptor Beta Polyclonal Antibody
Purified Rabbit Polyclonal Antibody (Pab)
Catalog # AP54490**Specification****Progesterin Receptor Beta Polyclonal Antibody - Product Information**

Application	WB, IHC-P, IHC-F, IF, E
Primary Accession	Q8TEZ7
Reactivity	Rat, Pig, Dog, Bovine
Host	Rabbit
Clonality	Polyclonal
Calculated MW	40 KDa
Physical State	Liquid
Immunogen	KLH conjugated synthetic peptide derived from human Progesterin Receptor Beta 251-300/354
Epitope Specificity	IgG
Isotype	
Purity	
affinity purified by Protein A	
Buffer	0.01M TBS (pH7.4) with 1% BSA, 0.02% Proclin300 and 50% Glycerol.
SUBCELLULAR LOCATION	Cell Membrane. Multi-pass membrane protein. Note: Colocalizes with a lysosomal protein cathepsin D.
SIMILARITY	Belongs to the ADIPOR family.
Important Note	This product as supplied is intended for research use only, not for use in human, therapeutic or diagnostic applications.

Background Descriptions

The steroid progesterone induces the resumption of maturation in oocytes via a nongenomic pathway through binding to a novel membrane progesterin receptor (mPR). This pathway inhibits adenylyl cyclase and reduces intracellular cAMP, and also activates mitogen-activated protein kinase to effect signal transduction pathways. Five distinct groups, designated Alpha, Beta, Gamma, Delta, comprise the mPR gene family. mPR Alpha, also designated progesterin and adipo Theta receptor family member VII (PAQR7), consists of an extracellular N-terminus, an intracellular C-terminus and seven transmembrane domains. mPR Alpha is expressed in ovary, testis, placenta, uterus and bladder. mPR Beta, or progesterin and adipo Theta receptor family member VIII (PAQR8), consists of eight putative transmembrane regions and an intracellular N-terminus that contains a leucine-rich motif. mPR Beta is a 354 amino acid protein expressed in brain and spinal cord. Both mPR Alpha and mPR Beta may be G protein-coupled receptors and may be involved in oocyte maturation.

Progesterin Receptor Beta Polyclonal Antibody - Additional Information**Gene ID** 85315**Other Names**

Membrane progesterin receptor beta, mPR beta, Lysosomal membrane protein in brain 1, Membrane

progesterone P4 receptor beta, Membrane progesterone receptor beta, Progesterone and adipoQ receptor family member 8, Progestin and adipoQ receptor family member 8, Progestin and adipoQ receptor family member VIII, PAQR8 (http://www.genenames.org/cgi-bin/gene_symbol_report?hgnc_id=15708)

Dilution

WB ~ 1:1000
IHC-P ~ N/A
IHC-F ~ N/A
IF ~ 1:50 ~ 200
E ~ N/A

Storage

Store at -20 °C for one year. Avoid repeated freeze/thaw cycles. When reconstituted in sterile pH 7.4 0.01M PBS or diluent of antibody the antibody is stable for at least two weeks at 2-4 °C.

Progestin Receptor Beta Polyclonal Antibody - Protein Information

Name PAQR8 ([HGNC:15708](#))

Function

Plasma membrane progesterone (P4) receptor coupled to G proteins (PubMed: [23763432](http://www.uniprot.org/citations/23763432)). Seems to act through a G(i) mediated pathway (PubMed: [23763432](http://www.uniprot.org/citations/23763432)). May be involved in oocyte maturation (By similarity). Also binds dehydroepiandrosterone (DHEA), pregnanolone, pregnenolone and allopregnanolone (PubMed: [23161870](http://www.uniprot.org/citations/23161870)).

Cellular Location

Cell membrane; Multi-pass membrane protein. Note=Colocalizes with a lysosomal protein CTSD/cathepsin D.

Tissue Location

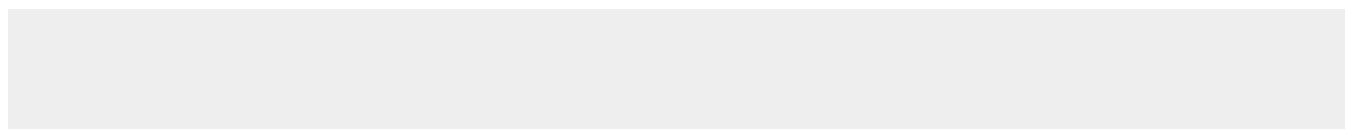
Highly expressed in the hypothalamus (PubMed:23161870). Also expressed in spinal cord, kidney and testis

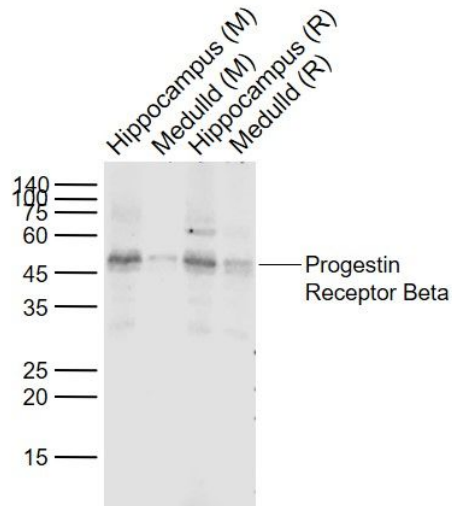
Progestin Receptor Beta Polyclonal Antibody - Protocols

Provided below are standard protocols that you may find useful for product applications.

- [Western Blot](#)
- [Blocking Peptides](#)
- [Dot Blot](#)
- [Immunohistochemistry](#)
- [Immunofluorescence](#)
- [Immunoprecipitation](#)
- [Flow Cytometry](#)
- [Cell Culture](#)

Progestin Receptor Beta Polyclonal Antibody - Images





Sample:

Lane 1: Hippocampus (Mouse) Lysate at 40 ug

Lane 2: Medulla (Mouse) Lysate at 40 ug

Lane 3: Hippocampus (Rat) Lysate at 40 ug

Lane 4: Medulla (Rat) Lysate at 40 ug

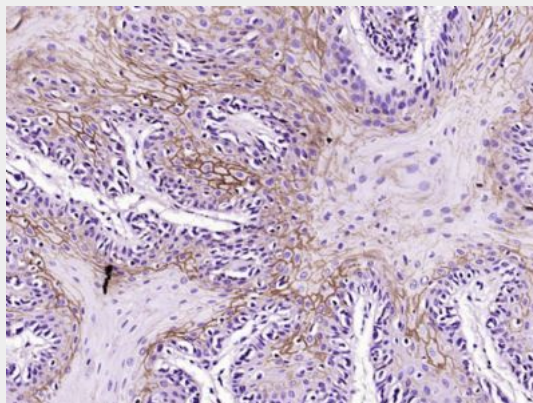
Primary:

Anti-Progesterone Receptor Beta (bs-11410R) at 1/1000 dilution

Secondary: IRDye800CW Goat Anti-Rabbit IgG at 1/20000 dilution

Predicted band size: 42 kD

Observed band size: 46 kD



Paraformaldehyde-fixed, paraffin embedded (Dog skin tumor); Antigen retrieval by boiling in sodium citrate buffer (pH6.0) for 15min; Block endogenous peroxidase by 3% hydrogen peroxide for 20 minutes; Blocking buffer (normal goat serum) at 37°C for 30min; Antibody incubation with (Progesterone Receptor Beta) Polyclonal Antibody, Unconjugated (bs-11410R) at 1:400 overnight at 4°C, followed by operating according to SP Kit(Rabbit) (sp-0023) instructions and DAB staining.