

Advillin Polyclonal Antibody
Purified Rabbit Polyclonal Antibody (Pab)
Catalog # AP54508**Specification**

Advillin Polyclonal Antibody - Product Information

Application	IHC-P
Primary Accession	075366
Reactivity	Rat, Pig, Dog, Bovine
Host	Rabbit
Clonality	Polyclonal
Calculated MW	92027

Advillin Polyclonal Antibody - Additional Information**Gene ID** 10677**Other Names**

Advillin, p92, AVIL (HGNC:14188)

Format

0.01M TBS(pH7.4), 0.09% (W/V) sodium azide and 50% Glyce

Storage

Store at -20 °C for one year. Avoid repeated freeze/thaw cycles. When reconstituted in sterile pH 7.4 0.01M PBS or diluent of antibody the antibody is stable for at least two weeks at 2-4 °C.

Advillin Polyclonal Antibody - Protein Information**Name** AVIL ([HGNC:14188](#))**Function**

Ca(2+)-regulated actin-binding protein which plays an important role in actin bundling (PubMed:29058690). May have a unique function in the morphogenesis of neuronal cells which form ganglia. Required for SREC1-mediated regulation of neurite-like outgrowth. Plays a role in regenerative sensory axon outgrowth and remodeling processes after peripheral injury in neonates. Involved in the formation of long fine actin-containing filopodia-like structures in fibroblast. Plays a role in ciliogenesis. In podocytes, controls lamellipodia formation through the regulation of EGF-induced diacylglycerol generation by PLCE1 and ARP2/3 complex assembly (PubMed:29058690).

Cellular Location

Cytoplasm, cytoskeleton. Cell projection, lamellipodium. Cell junction, focal adhesion. Cell projection, neuron projection {ECO:0000250|UniProtKB:Q9WU06}. Cell projection, axon {ECO:0000250|UniProtKB:Q9WU06}. Note=In podocytes, present in the F- actin-enriched cell

periphery that generates lamellipodia and focal adhesions.

Tissue Location

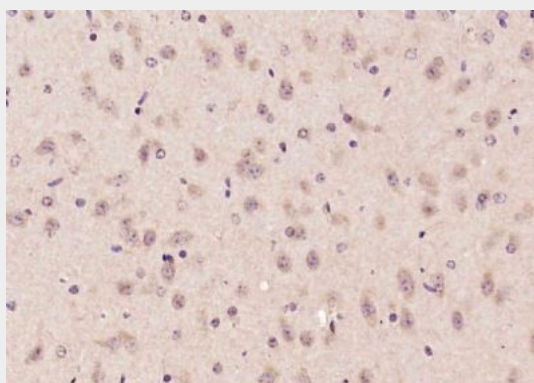
Most highly expressed in the small intestine and colonic lining. Weaker expression also detected in the thymus, prostate, testes and uterus (PubMed:12034507). Expressed in podocytes (at protein level) (PubMed:29058690).

Advillin Polyclonal Antibody - Protocols

Provided below are standard protocols that you may find useful for product applications.

- [Western Blot](#)
- [Blocking Peptides](#)
- [Dot Blot](#)
- [Immunohistochemistry](#)
- [Immunofluorescence](#)
- [Immunoprecipitation](#)
- [Flow Cytometry](#)
- [Cell Culture](#)

Advillin Polyclonal Antibody - Images



Paraformaldehyde-fixed, paraffin embedded (mouse brain); Antigen retrieval by boiling in sodium citrate buffer (pH6.0) for 15min; Block endogenous peroxidase by 3% hydrogen peroxide for 20 minutes; Blocking buffer (normal goat serum) at 37°C for 30min; Antibody incubation with (Advillin) Polyclonal Antibody, Unconjugated (bs-11451R) at 1:200 overnight at 4°C, followed by operating according to SP Kit(Rabbit) (sp-0023) instructions and DAB staining.