

**PLXNB3 Polyclonal Antibody**  
**Purified Rabbit Polyclonal Antibody (Pab)**  
**Catalog # AP54515****Specification**

---

**PLXNB3 Polyclonal Antibody - Product Information**

Application	IHC-P, IHC-F, IF, ICC, E
Primary Accession	<a href="#">Q9ULL4</a>
Reactivity	Rat, Pig, Dog
Host	Rabbit
Clonality	Polyclonal
Calculated MW	202 KDa
Physical State	Liquid
Immunogen	KLH conjugated synthetic peptide derived from human Plexin B3
Epitope Specificity	354-400/1909
Isotype	IgG
<b>Purity</b>	
affinity purified by Protein A	
Buffer	0.01M TBS (pH7.4) with 1% BSA, 0.02% Proclin300 and 50% Glycerol.
SUBCELLULAR LOCATION	Cell membrane; Single-pass type I membrane protein. Note=Colocalizes with RIT2/RIN at the plasma membrane.
SIMILARITY	Belongs to the plexin family. Contains 4 IPT/TIG domains. Contains 1 Sema domain. Interacts (via cytoplasmic domain) with RAC1 and ARHGDI1 (By similarity). Binds MET and MST1R. Interacts (via cytoplasmic domain) with FSCN1. Interacts with RIT2/RIN. May form homodimers (via Sema domain).
SUBUNIT	
Important Note	This product as supplied is intended for research use only, not for use in human, therapeutic or diagnostic applications.

**Background Descriptions**

Plexins are a family of large, transmembrane receptors for multiple classes of semaphorins in vertebrates. They are widely expressed, and regions of their extracellular domain are homologous to both scatter factor receptors and semaphorin domains. Plexins may act as semaphorin receptors alone or in combination with neuropilins. Plexins are divided into four subfamilies designated plexin-A, -B, -C, and -D. Plexin-B1 and -B2 are both receptors for Sema4D, which stimulates axonal outgrowth of embryonic dorsal root ganglion neurons. . Plexin-B3 binds to Sema5A, which controls axon guidance and can initiate the intracellular signaling of the hepatocyte growth factor/scatter factor receptor Met.

**PLXNB3 Polyclonal Antibody - Additional Information****Gene ID 5365**

**Other Names**

Plexin-B3, PLXNB3, KIAA1206, PLXN6

**Target/Specificity**

Detected at very low levels in several fetal tissues.

**Dilution**

IHC-P~~N/A  
IHC-F~~N/A  
IF~~1:50~200  
ICC~~N/A  
E~~N/A

**Storage**

Store at -20 °C for one year. Avoid repeated freeze/thaw cycles. When reconstituted in sterile pH 7.4 0.01M PBS or diluent of antibody the antibody is stable for at least two weeks at 2-4 °C.

**PLXNB3 Polyclonal Antibody - Protein Information**

**Name** PLXNB3

**Synonyms** KIAA1206, PLXN6

**Function**

Receptor for SEMA5A that plays a role in axon guidance, invasive growth and cell migration. Stimulates neurite outgrowth and mediates Ca(2+)/Mg(2+)-dependent cell aggregation. In glioma cells, SEMA5A stimulation of PLXNB3 results in the disassembly of F-actin stress fibers, disruption of focal adhesions and cellular collapse as well as inhibition of cell migration and invasion through ARHGDI- mediated inactivation of RAC1.

**Cellular Location**

Cell membrane; Single-pass type I membrane protein Note=Colocalizes with RIT2/RIN at the plasma membrane

**Tissue Location**

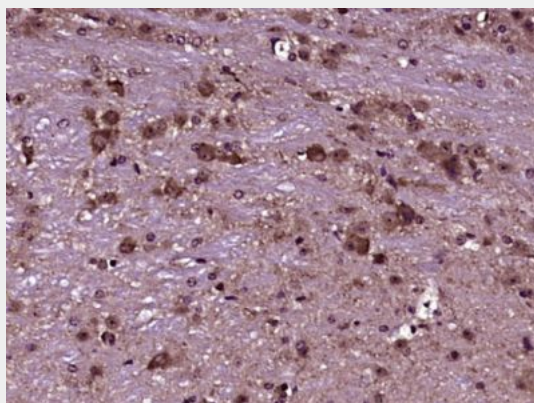
Expression detected in Purkinje and granular cells in cerebellum, and in brain neocortex but not in corpus callosum Expressed in glioma cells and embryonic kidney cells (at protein level). Expressed in brain, liver, pancreas and placenta, with weak expression detected also in lung and kidney. Expressed in several glioma cell lines.

**PLXNB3 Polyclonal Antibody - Protocols**

Provided below are standard protocols that you may find useful for product applications.

- [Western Blot](#)
- [Blocking Peptides](#)
- [Dot Blot](#)
- [Immunohistochemistry](#)
- [Immunofluorescence](#)
- [Immunoprecipitation](#)
- [Flow Cytometry](#)
- [Cell Culture](#)

**PLXNB3 Polyclonal Antibody - Images**



Paraformaldehyde-fixed, paraffin embedded (Mouse cerebellum); Antigen retrieval by boiling in sodium citrate buffer (pH6.0) for 15min; Block endogenous peroxidase by 3% hydrogen peroxide for 20 minutes; Blocking buffer (normal goat serum) at 37°C for 30min; Antibody incubation with (PLXNB3) Polyclonal Antibody, Unconjugated (bs-11470R) at 1:400 overnight at 4°C, followed by operating according to SP Kit(Rabbit) (sp-0023) instructions and DAB staining.