

SPAG16 Polyclonal Antibody
Purified Rabbit Polyclonal Antibody (Pab)
Catalog # AP54520**Specification**

SPAG16 Polyclonal Antibody - Product Information

Application	IHC-P, WB
Primary Accession	Q8N0X2
Reactivity	Rat, Dog, Bovine
Host	Rabbit
Clonality	Polyclonal
Calculated MW	70818

SPAG16 Polyclonal Antibody - Additional Information**Gene ID** 79582**Other Names**

Sperm-associated antigen 16 protein, Pf20 protein homolog, SPAG16, PF20

Format

0.01M TBS(pH7.4), 0.09% (W/V) sodium azide and 50% Glyce

Storage

Store at -20 °C for one year. Avoid repeated freeze/thaw cycles. When reconstituted in sterile pH 7.4 0.01M PBS or diluent of antibody the antibody is stable for at least two weeks at 2-4 °C.

SPAG16 Polyclonal Antibody - Protein Information**Name** SPAG16**Synonyms** PF20**Function**

Necessary for sperm flagellar function. Plays a role in motile ciliogenesis. May help to recruit STK36 to the cilium or apical surface of the cell to initiate subsequent steps of construction of the central pair apparatus of motile cilia (By similarity).

Cellular Location

Cytoplasm {ECO:0000250|UniProtKB:Q8K450}. Cytoplasm, cytoskeleton, flagellum axoneme {ECO:0000250|UniProtKB:Q8K450}. Cytoplasm, cytoskeleton, cilium axoneme {ECO:0000250|UniProtKB:Q8K450}. Cell projection, cilium, flagellum {ECO:0000250|UniProtKB:Q8K450}. Note=Detected on the sperm flagellum axoneme. Detected in the central apparatus of the axoneme. Colocalizes with SPAG6 on microtubules (By similarity) {ECO:0000250|UniProtKB:Q8K450}

Tissue Location

Isoform 1 is detected in testis. Isoform 4 is detected in testis and brain, and at lower levels in

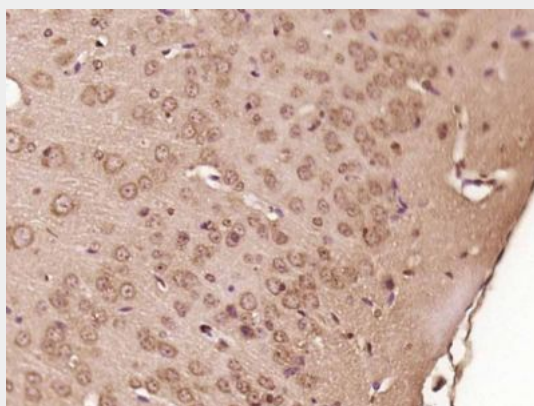
kidney, heart, pancreas, thyroid, ovary, adrenal gland, spinal cord, trachea and liver.

SPAG16 Polyclonal Antibody - Protocols

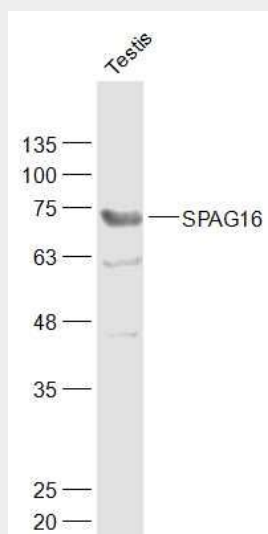
Provided below are standard protocols that you may find useful for product applications.

- [Western Blot](#)
- [Blocking Peptides](#)
- [Dot Blot](#)
- [Immunohistochemistry](#)
- [Immunofluorescence](#)
- [Immunoprecipitation](#)
- [Flow Cytometry](#)
- [Cell Culture](#)

SPAG16 Polyclonal Antibody - Images



Paraformaldehyde-fixed, paraffin embedded (Mouse brain); Antigen retrieval by boiling in sodium citrate buffer (pH6.0) for 15min; Block endogenous peroxidase by 3% hydrogen peroxide for 20 minutes; Blocking buffer (normal goat serum) at 37°C for 30min; Antibody incubation with (SPAG16) Polyclonal Antibody, Unconjugated (bs-11485R) at 1:400 overnight at 4°C, followed by operating according to SP Kit(Rabbit) (sp-0023) instructions and DAB staining.



Sample:

Testis (Rat) Lysate at 40 ug
Primary: Anti-SPAG16 (bs-11485R) at 1/1000 dilution
Secondary: IRDye800CW Goat Anti-Rabbit IgG at 1/20000 dilution
Predicted band size: 71 kD
Observed band size: 71 kD