

LAR Polyclonal Antibody
Purified Rabbit Polyclonal Antibody (Pab)
Catalog # AP54534**Specification**

LAR Polyclonal Antibody - Product Information

Application	IHC-P, IHC-F, IF, ICC, E
Primary Accession	P10586
Reactivity	Rat, Dog, Bovine
Host	Rabbit
Clonality	Polyclonal
Calculated MW	212879

LAR Polyclonal Antibody - Additional Information**Gene ID** 5792**Other Names**

Receptor-type tyrosine-protein phosphatase F, 3.1.3.48, Leukocyte common antigen related, LAR, PTPRF, LAR

Dilution

IHC-P ~ ~ N/A
IHC-F ~ ~ N/A
IF ~ ~ 1:50 ~ 200
ICC ~ ~ N/A
E ~ ~ N/A

Format

0.01M TBS(pH7.4), 0.09% (W/V) sodium azide and 50% Glyce

Storage

Store at -20 °C for one year. Avoid repeated freeze/thaw cycles. When reconstituted in sterile pH 7.4 0.01M PBS or diluent of antibody the antibody is stable for at least two weeks at 2-4 °C.

LAR Polyclonal Antibody - Protein Information**Name** PTPRF**Synonyms** LAR**Function**

Possible cell adhesion receptor. It possesses an intrinsic protein tyrosine phosphatase activity (PTPase) and dephosphorylates EPHA2 regulating its activity.

Cellular Location

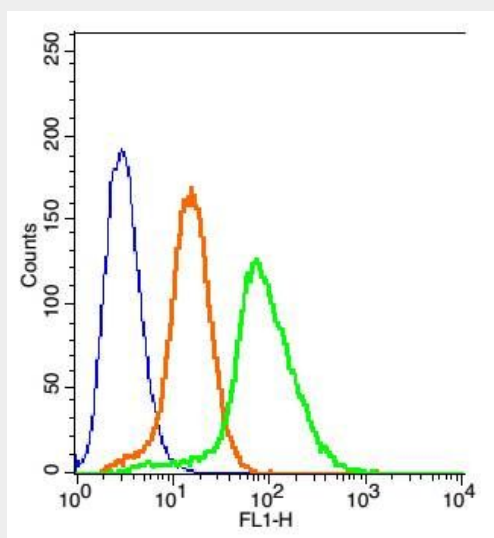
Membrane; Single-pass type I membrane protein.

LAR Polyclonal Antibody - Protocols

Provided below are standard protocols that you may find useful for product applications.

- [Western Blot](#)
- [Blocking Peptides](#)
- [Dot Blot](#)
- [Immunohistochemistry](#)
- [Immunofluorescence](#)
- [Immunoprecipitation](#)
- [Flow Cytometry](#)
- [Cell Culture](#)

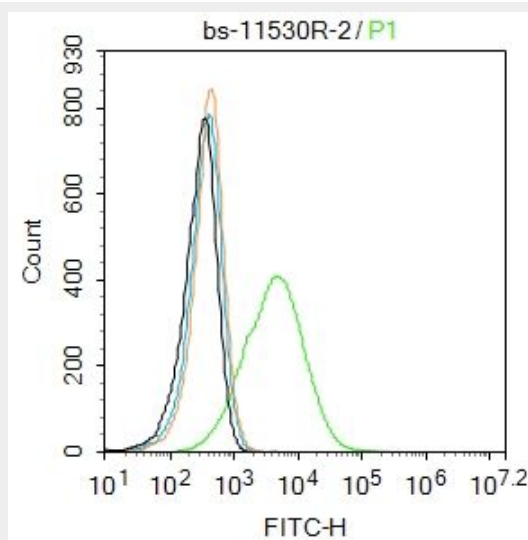
LAR Polyclonal Antibody - Images



Blank control(blue): Hela Cells(fixed with 2% paraformaldehyde (10 min)).

Primary Antibody: Rabbit Anti-LAR/AF488 Conjugated antibody (bs-11530R-AF488), Dilution: 1 μ g in 100 μ L 1X PBS containing 0.5% BSA;

Isotype Control Antibody: Rabbit IgG/AF488(orange) ,used under the same conditions.



Blank control:MCF7.

Primary Antibody (green line): Rabbit Anti-LAR antibody (bs-11530R)

Dilution: 2 μg / 10^6 cells;

Isotype Control Antibody (orange line): Rabbit IgG .

Secondary Antibody : Goat anti-rabbit IgG-AF488

Dilution: 1 μg /test.

Protocol

The cells were incubated in 5%BSA to block non-specific protein-protein interactions for 30 min at room temperature .Cells stained with Primary Antibody for 30 min at room temperature. The secondary antibody used for 40 min at room temperature. Acquisition of 20,000 events was performed.