

**NPW/Neuropeptide W Polyclonal Antibody**  
**Purified Rabbit Polyclonal Antibody (Pab)**  
**Catalog # AP54535****Specification**

---

**NPW/Neuropeptide W Polyclonal Antibody - Product Information**

Application	IF
Primary Accession	<a href="#">Q8N729</a>
Reactivity	Rat, Bovine
Host	Rabbit
Clonality	Polyclonal
Calculated MW	18048

**NPW/Neuropeptide W Polyclonal Antibody - Additional Information****Gene ID** 283869**Other Names**

Neuropeptide W, Preproprotein L8, hPPL8, Neuropeptide W-23, NPW23, hL8, Neuropeptide W-30, NPW30, hL8C, NPW, PPL8, PPNPW

**Format**

0.01M TBS(pH7.4), 0.09% (W/V) sodium azide and 50% Glyce

**Storage**

Store at -20 °C for one year. Avoid repeated freeze/thaw cycles. When reconstituted in sterile pH 7.4 0.01M PBS or diluent of antibody the antibody is stable for at least two weeks at 2-4 °C.

**NPW/Neuropeptide W Polyclonal Antibody - Protein Information****Name** NPW**Synonyms** PPL8, PPNPW**Function**

Plays a regulatory role in the organization of neuroendocrine signals accessing the anterior pituitary gland. Stimulates water drinking and food intake. May play a role in the hypothalamic response to stress (By similarity). NPW23 activates GPR7 and GPR8 more efficiently than NPW30.

**Cellular Location**

Secreted

**Tissue Location**

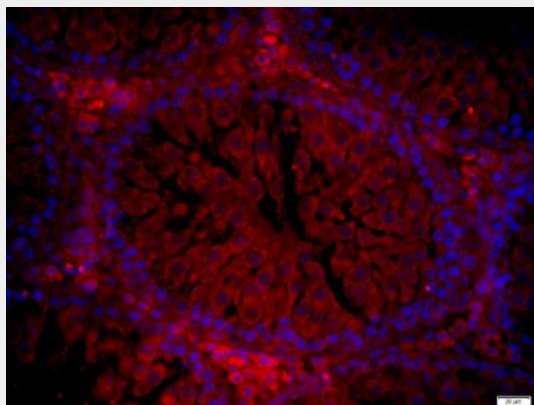
Detected in cerebrospinal fluid and urine (at protein level) (PubMed:25326458, PubMed:36213313, PubMed:37453717) Detected at high levels in the substantia nigra, fetal kidney and trachea; at lower levels in testis, uterus, ovary and placenta. Not detectable in many regions of the central nervous system. Also detected at high levels in lymphoblastic leukemia and colorectal adenocarcinoma

## NPW/Neuropeptide W Polyclonal Antibody - Protocols

Provided below are standard protocols that you may find useful for product applications.

- [Western Blot](#)
- [Blocking Peptides](#)
- [Dot Blot](#)
- [Immunohistochemistry](#)
- [Immunofluorescence](#)
- [Immunoprecipitation](#)
- [Flow Cytometry](#)
- [Cell Culture](#)

## NPW/Neuropeptide W Polyclonal Antibody - Images



Paraformaldehyde-fixed, paraffin embedded (rat testis); Antigen retrieval by boiling in sodium citrate buffer (pH6) for 15min; Block endogenous peroxidase by 3% hydrogen peroxide for 20 minutes; Blocking buffer (normal goat serum) at 37°C for 30min; Antibody incubation with (Neuropeptide W) Polyclonal Antibody, Unconjugated (bs-11531R) at 1:400 overnight at 4°C, followed by a conjugated secondary (bs-0295G-Cy3) at [1:500] for 90 minutes and DAPI staining of the nuclei.