

**PDE7A Polyclonal Antibody**  
**Purified Rabbit Polyclonal Antibody (Pab)**  
**Catalog # AP54552****Specification**

---

**PDE7A Polyclonal Antibody - Product Information**

Application	FC, IHC-P, WB
Primary Accession	<a href="#">Q13946</a>
Reactivity	Rat, Pig, Dog, Cow
Host	Rabbit
Clonality	Polyclonal
Calculated MW	55505

**PDE7A Polyclonal Antibody - Additional Information****Gene ID** 5150**Other Names**

High affinity cAMP-specific 3', 5'-cyclic phosphodiesterase 7A, 3.1.4.53, HCP1, TM22, PDE7A

**Format**

0.01M TBS(pH7.4), 0.09% (W/V) sodium azide and 50% Glyce

**Storage**

Store at -20 °C for one year. Avoid repeated freeze/thaw cycles. When reconstituted in sterile pH 7.4 0.01M PBS or diluent of antibody the antibody is stable for at least two weeks at 2-4 °C.

**PDE7A Polyclonal Antibody - Protein Information****Name** PDE7A {ECO:0000303|PubMed:9195912, ECO:0000312|HGNC:HGNC:8791}**Function**

Hydrolyzes the second messenger cAMP, which is a key regulator of many important physiological processes (PubMed:<a href="http://www.uniprot.org/citations/8389765" target="\_blank">8389765</a>, PubMed:<a href="http://www.uniprot.org/citations/9195912" target="\_blank">9195912</a>, PubMed:<a href="http://www.uniprot.org/citations/19350606" target="\_blank">19350606</a>). May have a role in muscle signal transduction (PubMed:<a href="http://www.uniprot.org/citations/9195912" target="\_blank">9195912</a>).

**Cellular Location**

[Isoform PDE7A1]: Cytoplasm, cytosol. Note=PDE7A1 (57 kDa) is located mostly to soluble cellular fractions.

**Tissue Location**

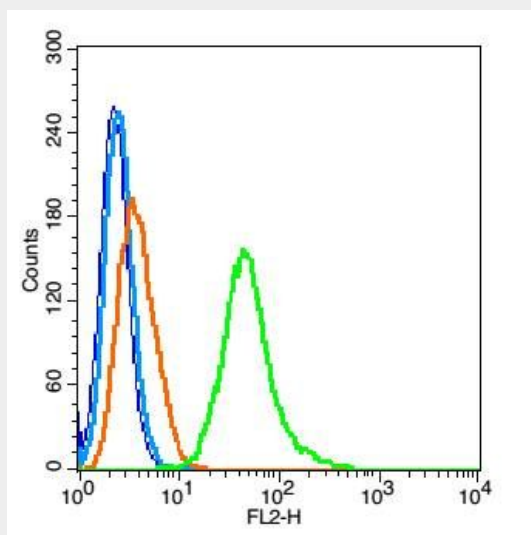
[Isoform PDE7A1]: Found at high levels in skeletal muscle and at low levels in a variety of tissues including brain and heart (PubMed:9195912). It is expressed as well in two T-cell lines (PubMed:9195912).

## PDE7A Polyclonal Antibody - Protocols

Provided below are standard protocols that you may find useful for product applications.

- [Western Blot](#)
- [Blocking Peptides](#)
- [Dot Blot](#)
- [Immunohistochemistry](#)
- [Immunofluorescence](#)
- [Immunoprecipitation](#)
- [Flow Cytometry](#)
- [Cell Culture](#)

## PDE7A Polyclonal Antibody - Images

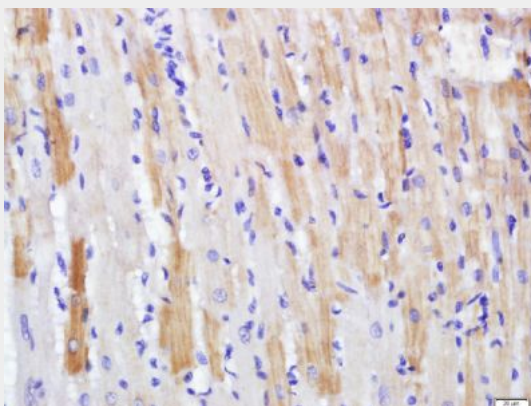


Blank control(blue): RSC96 cells(fixed with 2% paraformaldehyde (10 min) , then permeabilized with 90% ice-cold methanol for 30 min on ice).

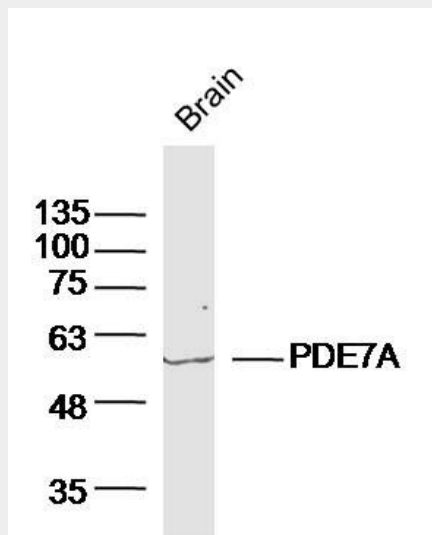
Primary Antibody:Rabbit Anti- PDE7A antibody(bs-11575R), Dilution: 1  $\mu$ g in 100  $\mu$ L 1X PBS containing 0.5% BSA;

Isotype Control Antibody: Rabbit IgG(orange) ,used under the same conditions );

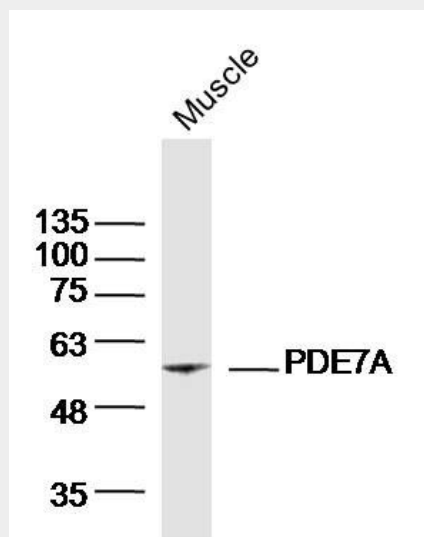
Secondary Antibody: Goat anti-rabbit IgG-PE(white blue), Dilution: 1:200 in 1 X PBS containing 0.5% BSA.



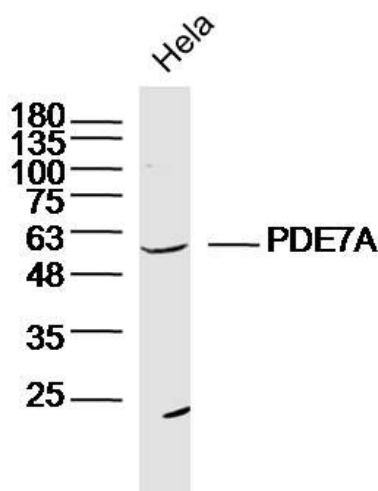
Paraformaldehyde-fixed, paraffin embedded (rat heart); Antigen retrieval by boiling in sodium citrate buffer (pH6.0) for 15min; Block endogenous peroxidase by 3% hydrogen peroxide for 20 minutes; Blocking buffer (normal goat serum) at 37°C for 30min; Antibody incubation with (PDE7A) Polyclonal Antibody, Unconjugated (bs-11575R) at 1:500 overnight at 4°C, followed by a conjugated secondary (sp-0023) for 20 minutes and DAB staining.



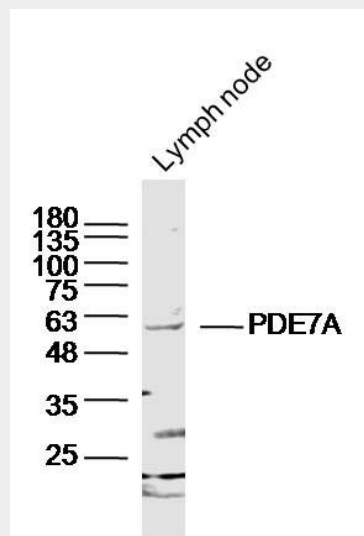
Sample: Brain (Mouse) Lysate at 40 ug  
Primary: Anti-PDE7A(bs-11575R) at 1/300 dilution  
Secondary: IRDye800CW Goat Anti-Rabbit IgG at 1/20000 dilution  
Predicted band size: 55kD  
Observed band size: 55kD



Sample: Muscle (Mouse) Lysate at 40 ug  
Primary: Anti-PDE7A(bs-11575R) at 1/300 dilution  
Secondary: IRDye800CW Goat Anti-Rabbit IgG at 1/20000 dilution  
Predicted band size: 55kD  
Observed band size: 55kD



Sample: HeLa Cell (Human) Lysate at 30 ug  
Primary: Anti-PDE7A (bs-11575R) at 1/300 dilution  
Secondary: IRDye800CW Goat Anti-Rabbit IgG at 1/20000 dilution  
Predicted band size: 55kD  
Observed band size: 55kD



Sample: Lymph node (Mouse) Lysate at 40 ug  
Primary: Anti-PDE7A (bs-11575R) at 1/300 dilution  
Secondary: IRDye800CW Goat Anti-Rabbit IgG at 1/20000 dilution  
Predicted band size: 55kD  
Observed band size: 55kD