

TMEM59L Polyclonal Antibody
Purified Rabbit Polyclonal Antibody (Pab)
Catalog # AP54579**Specification**

TMEM59L Polyclonal Antibody - Product Information

| | |
|-------------------|------------------------------|
| Application | WB, IHC-P, IHC-F, IF, ICC, E |
| Primary Accession | O9UK28 |
| Reactivity | Rat, Pig, Dog, Bovine |
| Host | Rabbit |
| Clonality | Polyclonal |
| Calculated MW | 37619 |

TMEM59L Polyclonal Antibody - Additional Information**Gene ID** 25789**Other Names**

Transmembrane protein 59-like, Brain-specific membrane-anchored protein, TMEM59L, BSMAP, C19orf4

Dilution

WB~~1:1000<br \>IHC-P~~N/A<br \>IHC-F~~N/A<br \>IF~~1:50~200<br \>ICC~~N/A<br \>E~~N/A

Format

0.01M TBS(pH7.4), 0.09% (W/V) sodium azide and 50% Glyce

Storage

Store at -20 °C for one year. Avoid repeated freeze/thaw cycles. When reconstituted in sterile pH 7.4 0.01M PBS or diluent of antibody the antibody is stable for at least two weeks at 2-4 °C.

TMEM59L Polyclonal Antibody - Protein Information**Name** TMEM59L**Synonyms** BSMAP, C19orf4**Function**

Modulates the O-glycosylation and complex N-glycosylation steps occurring during the Golgi maturation of APP. Inhibits APP transport to the cell surface and further shedding.

Cellular Location

Golgi apparatus membrane; Single-pass type I membrane protein

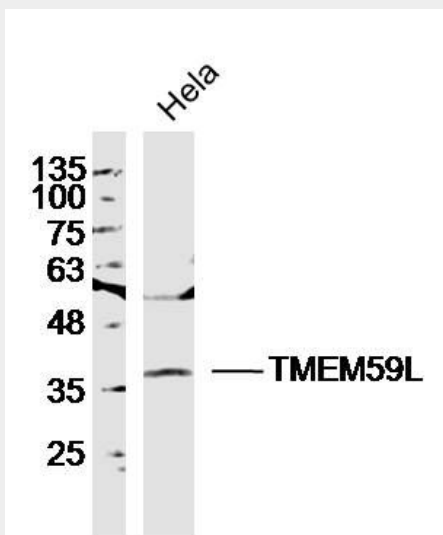
Tissue Location

Expressed preferentially at high level in the brain

TMEM59L Polyclonal Antibody - Protocols

Provided below are standard protocols that you may find useful for product applications.

- [Western Blot](#)
- [Blocking Peptides](#)
- [Dot Blot](#)
- [Immunohistochemistry](#)
- [Immunofluorescence](#)
- [Immunoprecipitation](#)
- [Flow Cytometry](#)
- [Cell Culture](#)

TMEM59L Polyclonal Antibody - Images

Sample: HeLa Cell(Human)Lysate at 30 ug

Primary: Anti-TMEM59L (bs-11648R) at 1/300 dilution

Secondary: IRDye800CW Goat Anti-Rabbit IgG at 1/20000 dilution

Predicted band size: 35kD

Observed band size: 37kD