

Gbx1 Polyclonal Antibody
Purified Rabbit Polyclonal Antibody (Pab)
Catalog # AP54586

Specification

Gbx1 Polyclonal Antibody - Product Information

Application	IHC-P, IHC-F, IF, ICC, E
Primary Accession	Q14549
Reactivity	Rat, Pig, Chimpanzee, Dog
Host	Rabbit
Clonality	Polyclonal
Calculated MW	38 KDa
Physical State	Liquid
Immunogen	KLH conjugated synthetic peptide derived from human Gbx1
Epitope Specificity	201-300/363
Isotype	IgG
Purity	
affinity purified by Protein A	
Buffer	0.01M TBS (pH7.4) with 1% BSA, 0.02% Proclin300 and 50% Glycerol.
SUBCELLULAR LOCATION	Nucleus.
SIMILARITY	Contains 1 homeobox DNA-binding domain.
Important Note	This product as supplied is intended for research use only, not for use in human, therapeutic or diagnostic applications.

Background Descriptions

The homeobox is DNA sequence that is approximately 180 base pairs long that is involved in all steps of the developmental regulation of animals, fungi and plants, from embryogenesis to cell differentiation. The homeobox encodes a protein domain of about 60 amino acids, called the homeodomain, that can bind to DNA. The gastrulation brain homeobox 1 (GBX1) gene, along with another homeobox gene (EN2), maps to chromosome 7q36, and is expressed in septal and pallidal areas and in the basal forebrain cholinergic system, an area implicated in Alzheimer's disease. The GBX1 gene encodes the GBX1 protein, which localizes to the nucleus and contains 1 homeobox DNA-binding domain.

Gbx1 Polyclonal Antibody - Additional Information

Gene ID 2636

Other Names

Homeobox protein GBX-1, Gastrulation and brain-specific homeobox protein 1, GBX1

Dilution

IHC-P~~N/A<br \>IHC-F~~N/A<br \>IF~~1:50~200<br \>ICC~~N/A<br \>E~~N/A

Format

0.01M TBS(pH7.4), 0.09% (W/V) sodium azide and 50% Glyce

Storage

Store at -20 °C for one year. Avoid repeated freeze/thaw cycles. When reconstituted in sterile pH 7.4 0.01M PBS or diluent of antibody the antibody is stable for at least two weeks at 2-4 °C.

Gbx1 Polyclonal Antibody - Protein Information

Name GBX1

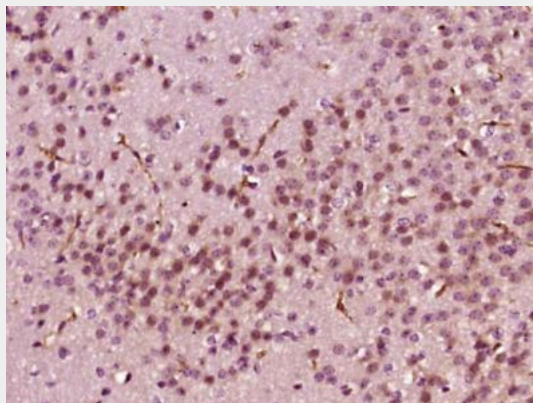
Cellular Location

Nucleus {ECO:0000255|PROSITE-ProRule:PRU00108}.

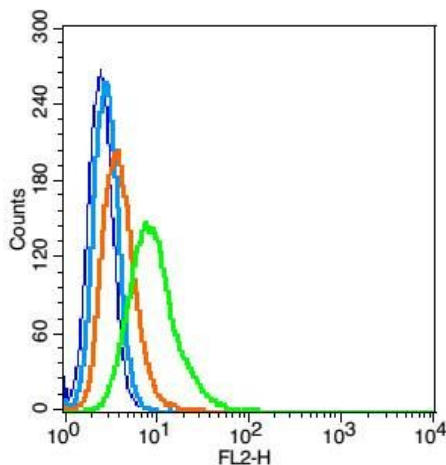
Gbx1 Polyclonal Antibody - Protocols

Provided below are standard protocols that you may find useful for product applications.

- [Western Blot](#)
- [Blocking Peptides](#)
- [Dot Blot](#)
- [Immunohistochemistry](#)
- [Immunofluorescence](#)
- [Immunoprecipitation](#)
- [Flow Cytometry](#)
- [Cell Culture](#)

Gbx1 Polyclonal Antibody - Images

Paraformaldehyde-fixed, paraffin embedded (Mouse brain); Antigen retrieval by boiling in sodium citrate buffer (pH6.0) for 15min; Block endogenous peroxidase by 3% hydrogen peroxide for 20 minutes; Blocking buffer (normal goat serum) at 37°C for 30min; Antibody incubation with (Gbx1) Polyclonal Antibody, Unconjugated (bs-11660R) at 1:400 overnight at 4°C, followed by operating according to SP Kit(Rabbit) (sp-0023) instructions and DAB staining.



Blank control(blue): RSC96(fixed with 2% paraformaldehyde (10 min) and then permeabilized with ice-cold 90% methanol for 30 min on ice).

Primary Antibody:Rabbit Anti-Gbx1 antibody(bs-11660R), Dilution: 1 μ g in 100 μ L 1X PBS containing 0.5% BSA;

Isotype Control Antibody: Rabbit IgG(orange) ,used under the same conditions);

Secondary Antibody: Goat anti-rabbit IgG-PE(white blue), Dilution: 1:200 in 1 X PBS containing 0.5% BSA.