

Capicua Polyclonal Antibody
Purified Rabbit Polyclonal Antibody (Pab)
Catalog # AP54608**Specification****Capicua Polyclonal Antibody - Product Information**

Application	IHC-P, IHC-F, IF, ICC, E
Primary Accession	Q96RK0
Reactivity	Rat, Pig, Dog, Bovine
Host	Rabbit
Clonality	Polyclonal
Calculated MW	164 KDa
Physical State	Liquid
Immunogen	KLH conjugated synthetic peptide derived from human Capicua
Epitope Specificity	1475-1560/1608
Isotype	IgG
Purity	
affinity purified by Protein A	
Buffer	0.01M TBS (pH7.4) with 1% BSA, 0.02% Proclin300 and 50% Glycerol.
SUBCELLULAR LOCATION	Nucleus.
SIMILARITY	Contains 1 HMG box DNA-binding domain.
SUBUNIT	Interacts with ATXN1 and ATXN1L
Important Note	This product as supplied is intended for research use only, not for use in human, therapeutic or diagnostic applications.

Background Descriptions

Capicua is the mammalian ortholog of the drosophila Cic gene and is part of the HMG-box protein superfamily. Expressed primarily in the fetal brain, Capicua functions as a transcriptional repressor and is involved in the development of the nervous system through interaction with the ATXN1 protein. When ATXN1 assembles into stable complexes, it directly binds Capicua, thereby mediating both the activity and expression of Capicua. When Capicua is active, it is able to interact with other developmental proteins to restrict the growth of granule cells and regulate normal neuronal development. Disruptions in the the association of Capicua with proteins such as ATXN1 are thought to cause medulloblastoma, the most common form of perdiatric brain tumor arising from irregular growth of granule cells.

Capicua Polyclonal Antibody - Additional Information**Gene ID** 23152**Other Names**

Protein capicua homolog, CIC, KIAA0306

Target/Specificity

Expressed in fetal brain.

Dilution

IHC-P ~ ~ N/A
IHC-F ~ ~ N/A
IF ~ ~ 1:50 ~ 200
ICC ~ ~ N/A
E ~ ~ N/A

Format

0.01M TBS(pH7.4), 0.09% (W/V) sodium azide and 50% Glyce

Storage

Store at -20 °C for one year. Avoid repeated freeze/thaw cycles. When reconstituted in sterile pH 7.4 0.01M PBS or diluent of antibody the antibody is stable for at least two weeks at 2-4 °C.

Capicua Polyclonal Antibody - Protein Information

Name CIC

Synonyms KIAA0306

Function

Transcriptional repressor which plays a role in development of the central nervous system (CNS). In concert with ATXN1 and ATXN1L, involved in brain development.

Cellular Location

Nucleus {ECO:0000255|PROSITE-ProRule:PRU00267}.

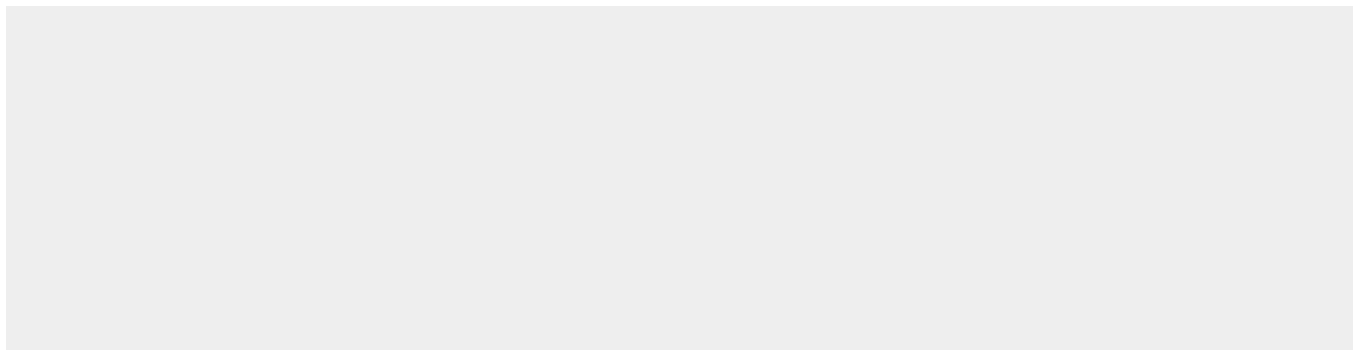
Tissue Location

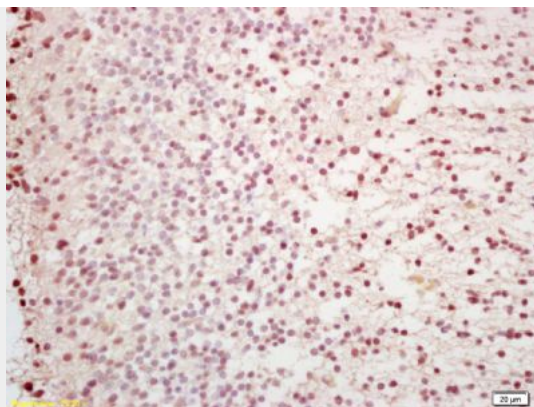
Expressed in fetal brain.

Capicua Polyclonal Antibody - Protocols

Provided below are standard protocols that you may find useful for product applications.

- [Western Blot](#)
- [Blocking Peptides](#)
- [Dot Blot](#)
- [Immunohistochemistry](#)
- [Immunofluorescence](#)
- [Immunoprecipitation](#)
- [Flow Cytometry](#)
- [Cell Culture](#)

Capicua Polyclonal Antibody - Images



Tissue/cell: brain of mouse embryo; 4% Paraformaldehyde-fixed and paraffin-embedded;

Antigen retrieval: citrate buffer (0.01M, pH 6.0), Boiling bathing for 15min; Block endogenous peroxidase by 3% Hydrogen peroxide for 30min; Blocking buffer (normal goat serum,C-0005) at 37°C for 20 min;

Incubation: Anti-Capicua Polyclonal Antibody, Unconjugated(bs-11721R) 1:200, overnight at 4°C, followed by conjugation to the secondary antibody(SP-0023) and DAB(C-0010) staining