

CCM2 Polyclonal Antibody
Purified Rabbit Polyclonal Antibody (Pab)
Catalog # AP54633**Specification**

CCM2 Polyclonal Antibody - Product Information

Application	WB
Primary Accession	O9BSQ5
Reactivity	Rat, Bovine
Host	Rabbit
Clonality	Polyclonal
Calculated MW	48837

CCM2 Polyclonal Antibody - Additional Information**Gene ID** 83605**Other Names**

Cerebral cavernous malformations 2 protein, Malcavernin, CCM2, C7orf22

Format

0.01M TBS(pH7.4), 0.09% (W/V) sodium azide and 50% Glyce

Storage

Store at -20 °C for one year. Avoid repeated freeze/thaw cycles. When reconstituted in sterile pH 7.4 0.01M PBS or diluent of antibody the antibody is stable for at least two weeks at 2-4 °C.

CCM2 Polyclonal Antibody - Protein Information**Name** CCM2**Synonyms** C7orf22**Function**

Component of the CCM signaling pathway which is a crucial regulator of heart and vessel formation and integrity. May act through the stabilization of endothelial cell junctions (By similarity). May function as a scaffold protein for MAP2K3-MAP3K3 signaling. Seems to play a major role in the modulation of MAP3K3-dependent p38 activation induced by hyperosmotic shock (By similarity).

Cellular Location

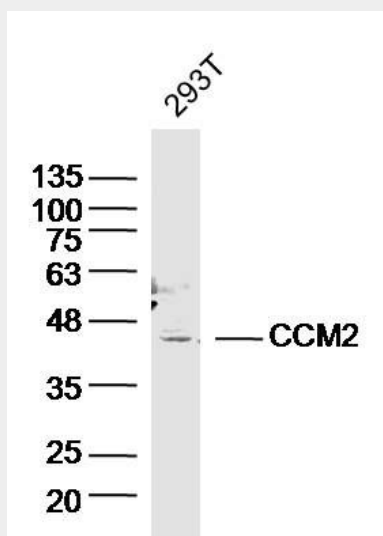
Cytoplasm.

CCM2 Polyclonal Antibody - Protocols

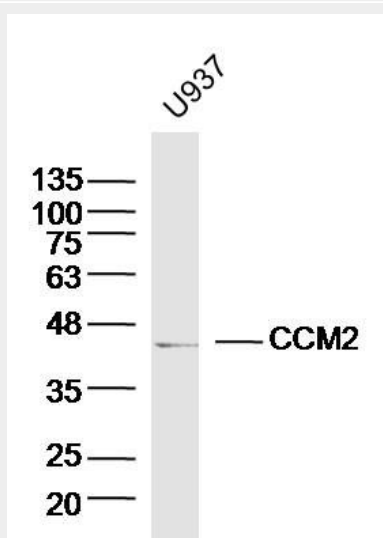
Provided below are standard protocols that you may find useful for product applications.

- [Western Blot](#)
- [Blocking Peptides](#)
- [Dot Blot](#)
- [Immunohistochemistry](#)
- [Immunofluorescence](#)
- [Immunoprecipitation](#)
- [Flow Cytometry](#)
- [Cell Culture](#)

CCM2 Polyclonal Antibody - Images



Sample: 293T (human)cell Lysate at 40 ug
Primary: Anti- CCM2 (bs-11817R)at 1/300 dilution
Secondary: IRDye800CW Goat Anti-Rabbit IgG at 1/20000 dilution
Predicted band size: 49 kD
Observed band size: 45 kD



Sample: U937 (human)cell Lysate at 40 ug
Primary: Anti- CCM2 (bs-11817R)at 1/300 dilution
Secondary: IRDye800CW Goat Anti-Rabbit IgG at 1/20000 dilution

Predicted band size: 49 kD
Observed band size: 45 kD