

KLF7 Polyclonal Antibody
Purified Rabbit Polyclonal Antibody (Pab)
Catalog # AP54654**Specification****KLF7 Polyclonal Antibody - Product Information**

Application	WB, IHC-P, IHC-F, IF, ICC, E
Primary Accession	O75840
Reactivity	Rat, Pig, Dog, Bovine
Host	Rabbit
Clonality	Polyclonal
Calculated MW	33 KDa
Physical State	Liquid
Immunogen	KLH conjugated synthetic peptide derived from human KLF7
Epitope Specificity	131-210/302
Isotype	IgG
Purity	
affinity purified by Protein A	
Buffer	0.01M TBS (pH7.4) with 1% BSA, 0.02% Proclin300 and 50% Glycerol.
SUBCELLULAR LOCATION	Nucleus.
SIMILARITY	Belongs to the krueppel C2H2-type zinc-finger protein family. Contains 3 C2H2-type zinc fingers.
Important Note	This product as supplied is intended for research use only, not for use in human, therapeutic or diagnostic applications.

Background Descriptions

KLF7 is a transcriptional activator that belongs to the Krüppel C2H2-type zinc finger protein family. KLF7 targets promotor regions bearing CACCC elements in order to regulate transcription. It is believed that KLF7 is an important element for regulation of differentiation and the development of nervous systems. Specifically, increased expression of KLF7 is associated with neuronal precursors exiting the cell cycle and beginning to differentiate. Overexpression of KLF7 can lead to cell cycle arrest and a decrease in DNA synthesis. Also, KLF7 is thought to regulate the expression of Trk A, the receptor for nerve growth factor, which is required for the normal growth and maturation of neurons. KLF7 is a widely expressed protein with highest expression found in brain and nervous tissue.

KLF7 Polyclonal Antibody - Additional Information**Gene ID 8609****Other Names**

Krueppel-like factor 7, Ubiquitous krueppel-like factor, KLF7 (HGNC:6350)

Target/Specificity

Ubiquitous and highly expressed in brain and spinal cord in the adult, and in kidney and brain in the embryo.

Dilution

WB~~1:1000<br \>IHC-P~~N/A<br \>IHC-F~~N/A<br \>IF~~1:50~200<br \>ICC~~N/A<br \>E~~N/A

Format

0.01M TBS(pH7.4), 0.09% (W/V) sodium azide and 50% Glycerol

Storage

Store at -20 °C for one year. Avoid repeated freeze/thaw cycles. When reconstituted in sterile pH 7.4 0.01M PBS or diluent of antibody the antibody is stable for at least two weeks at 2-4 °C.

KLF7 Polyclonal Antibody - Protein Information

Name KLF7 ([HGNC:6350](#))

Function

Transcriptional factor (PubMed:16339272, PubMed:9774444). Plays a critical role in neuronal morphogenesis and survival of sensory neurons (By similarity). Represses the corneal epithelium differentiation (PubMed:28916725). Also acts as a metabolic regulator, by modulating insulin sensitivity in pancreatic beta cells and skeletal muscle cells (PubMed:16339272). Inhibits transcriptional inducers of adipogenesis and has a repressive role in the expression of several adipokines, including leptin (PubMed:16339272).

Cellular Location

Nucleus.

Tissue Location

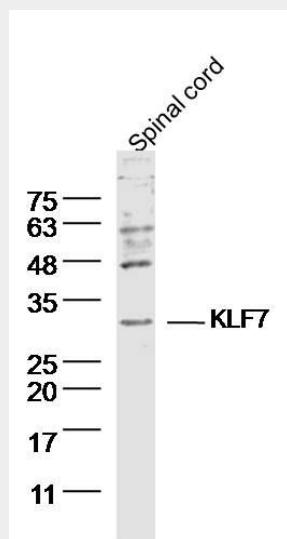
Widely expressed.

KLF7 Polyclonal Antibody - Protocols

Provided below are standard protocols that you may find useful for product applications.

- [Western Blot](#)
- [Blocking Peptides](#)
- [Dot Blot](#)
- [Immunohistochemistry](#)
- [Immunofluorescence](#)
- [Immunoprecipitation](#)
- [Flow Cytometry](#)
- [Cell Culture](#)

KLF7 Polyclonal Antibody - Images



Sample: Spinal cord (Mouse) Lysate at 40 ug
Primary: Anti-KLF7 (bs-11865R) at 1/300 dilution
Secondary: IRDye800CW Goat Anti-Rabbit IgG at 1/20000 dilution
Predicted band size: 33 kD
Observed band size: 33 kD