

CCDC69 Antibody (Center)
Affinity Purified Rabbit Polyclonal Antibody (Pab)
Catalog # AP5466C**Specification**

CCDC69 Antibody (Center) - Product Information

Application	WB, FC,E
Primary Accession	A6NI79
Other Accession	NP_056436.2
Reactivity	Human, Mouse
Host	Rabbit
Clonality	Polyclonal
Isotype	Rabbit IgG
Antigen Region	141-170

CCDC69 Antibody (Center) - Additional Information**Gene ID** 26112**Other Names**

Coiled-coil domain-containing protein 69, CCDC69

Target/Specificity

This CCDC69 antibody is generated from rabbits immunized with a KLH conjugated synthetic peptide between 141-170 amino acids from the Central region of human CCDC69.

DilutionWB~~1:1000
FC~~1:10~50**Format**

Purified polyclonal antibody supplied in PBS with 0.09% (W/V) sodium azide. This antibody is purified through a protein A column, followed by peptide affinity purification.

Storage

Maintain refrigerated at 2-8°C for up to 2 weeks. For long term storage store at -20°C in small aliquots to prevent freeze-thaw cycles.

Precautions

CCDC69 Antibody (Center) is for research use only and not for use in diagnostic or therapeutic procedures.

CCDC69 Antibody (Center) - Protein Information**Name** CCDC69 ([HGNC:24487](#))

Function May act as a scaffold to regulate the recruitment and assembly of spindle midzone components. Required for the localization of AURKB and PLK1 to the spindle midzone.

Cellular Location

Cytoplasm, cytoskeleton, spindle. Midbody Note=During early anaphase, localizes along overlapping interpolar microtubules between the separating chromosomes. During late anaphase, localizes to the center of spindle midzone. Concentrated at the midbody during telophase.

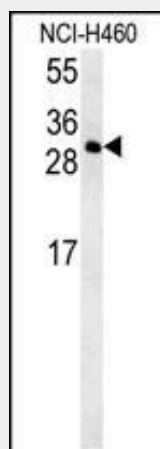
Tissue Location

Highly expressed in duodenum, esophagus, pancreas, prostate, salivary gland, thymus and urinary bladder

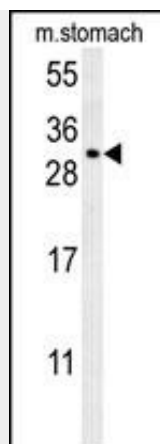
CCDC69 Antibody (Center) - Protocols

Provided below are standard protocols that you may find useful for product applications.

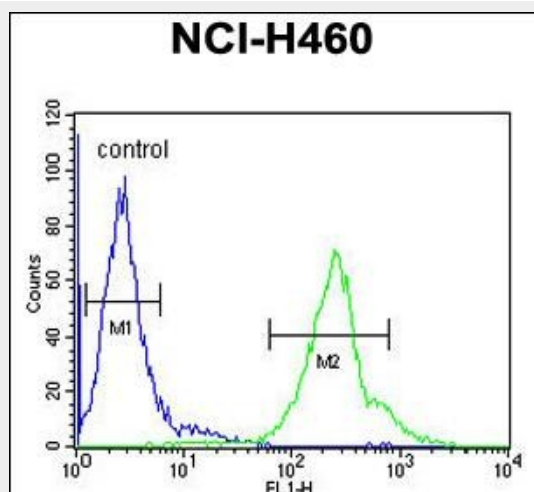
- [Western Blot](#)
- [Blocking Peptides](#)
- [Dot Blot](#)
- [Immunohistochemistry](#)
- [Immunofluorescence](#)
- [Immunoprecipitation](#)
- [Flow Cytometry](#)
- [Cell Culture](#)

CCDC69 Antibody (Center) - Images

CCDC69 Antibody (Center) (Cat.#AP5466c) western blot analysis in NCI-H460 cell line lysates (35ug/lane). This demonstrates the CCDC69 antibody detected the CCDC69 protein (arrow).



CCDC69 Antibody (Center) (Cat. #AP5466c) western blot analysis in mouse stomach tissue lysates (35ug/lane). This demonstrates the CCDC69 antibody detected the CCDC69 protein (arrow).



CCDC69 Antibody (Center) (Cat. #AP5466c) flow cytometric analysis of NCI-H460 cells (right histogram) compared to a negative control cell (left histogram). FITC-conjugated goat-anti-rabbit secondary antibodies were used for the analysis.

CCDC69 Antibody (Center) - Background

The function of CCDC69 remains unknown.

CCDC69 Antibody (Center) - References

Suzuki, Y., et al. Gene 200 (1-2), 149-156 (1997)