

KCC4 Polyclonal Antibody
Purified Rabbit Polyclonal Antibody (Pab)
Catalog # AP54760**Specification**

KCC4 Polyclonal Antibody - Product Information

Application	WB
Primary Accession	Q9Y666
Reactivity	Rat, Pig
Host	Rabbit
Clonality	Polyclonal
Calculated MW	119106

KCC4 Polyclonal Antibody - Additional Information**Gene ID** 10723**Other Names**

Solute carrier family 12 member 7, Electroneutral potassium-chloride cotransporter 4, K-Cl cotransporter 4, SLC12A7, KCC4

Format

0.01M TBS(pH7.4), 0.09% (W/V) sodium azide and 50% Glyce

Storage

Store at -20 °C for one year. Avoid repeated freeze/thaw cycles. When reconstituted in sterile pH 7.4 0.01M PBS or diluent of antibody the antibody is stable for at least two weeks at 2-4 °C.

KCC4 Polyclonal Antibody - Protein Information**Name** SLC12A7 ([HGNC:10915](#))**Function**

Mediates electroneutral potassium-chloride cotransport when activated by cell swelling (PubMed:10913127). May mediate K(+) uptake into Deiters' cells in the cochlea and contribute to K(+) recycling in the inner ear. Important for the survival of cochlear outer and inner hair cells and the maintenance of the organ of Corti. May be required for basolateral Cl(-) extrusion in the kidney and contribute to renal acidification (By similarity).

Cellular Location

Cell membrane; Multi-pass membrane protein

Tissue Location

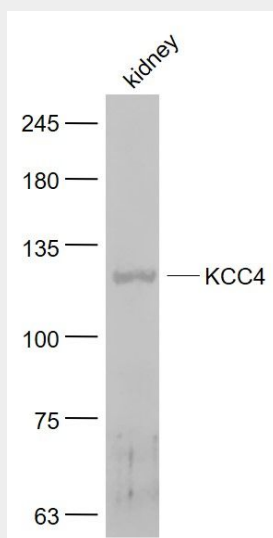
Detected in muscle, brain, lung, heart and kidney.

KCC4 Polyclonal Antibody - Protocols

Provided below are standard protocols that you may find useful for product applications.

- [Western Blot](#)
- [Blocking Peptides](#)
- [Dot Blot](#)
- [Immunohistochemistry](#)
- [Immunofluorescence](#)
- [Immunoprecipitation](#)
- [Flow Cytometry](#)
- [Cell Culture](#)

KCC4 Polyclonal Antibody - Images



Sample:

Kidney (Mouse) Lysate at 40 ug

Primary: Anti- KCC4 (bs-12170R) at 1/1000 dilution

Secondary: IRDye800CW Goat Anti-Rabbit IgG at 1/20000 dilution

Predicted band size: 119 kD

Observed band size: 119 kD