

**KCNG1 Polyclonal Antibody**  
**Purified Rabbit Polyclonal Antibody (Pab)**  
**Catalog # AP54762****Specification**

---

**KCNG1 Polyclonal Antibody - Product Information**

Application	IHC-P, IHC-F, IF, ICC, E
Primary Accession	<a href="#">O9UIX4</a>
Reactivity	Rat, Pig, Dog, Bovine
Host	Rabbit
Clonality	Polyclonal
Calculated MW	57913

**KCNG1 Polyclonal Antibody - Additional Information****Gene ID** 3755**Other Names**

Potassium voltage-gated channel subfamily G member 1, Voltage-gated potassium channel subunit Kv6.1, KH2, KCNG1

**Dilution**

<span class = "dilution\_IHC-P">IHC-P~~N/A</span><br \><span class = "dilution\_IHC-F">IHC-F~~N/A</span><br \><span class = "dilution\_IF">IF~~1:50~200</span><br \><span class = "dilution\_ICC">ICC~~N/A</span><br \><span class = "dilution\_E">E~~N/A</span>

**Format**

0.01M TBS(pH7.4), 0.09% (W/V) sodium azide and 50% Glyce

**Storage**

Store at -20 °C for one year. Avoid repeated freeze/thaw cycles. When reconstituted in sterile pH 7.4 0.01M PBS or diluent of antibody the antibody is stable for at least two weeks at 2-4 °C.

**KCNG1 Polyclonal Antibody - Protein Information****Name** KCNG1 ([HGNC:6248](#))**Function**

Regulatory alpha-subunit of the voltage-gated potassium (Kv) channel which, when coassembled with KCNB1 or KCNB2, can modulate their expression and their gating kinetics by acting on deactivation upon repolarization and inactivation during maintained depolarization (PubMed:<a href="http://www.uniprot.org/citations/19074135" target="\_blank">19074135</a>). Potassium channel subunit that does not form functional channels by itself (PubMed:<a href="http://www.uniprot.org/citations/19074135" target="\_blank">19074135</a>).

**Cellular Location**

Cell membrane {ECO:0000250|UniProtKB:Q14721}; Multi-pass membrane protein.

Note=Colocalizes with KCNB1 at the plasma membrane. {ECO:0000250|UniProtKB:Q14721}

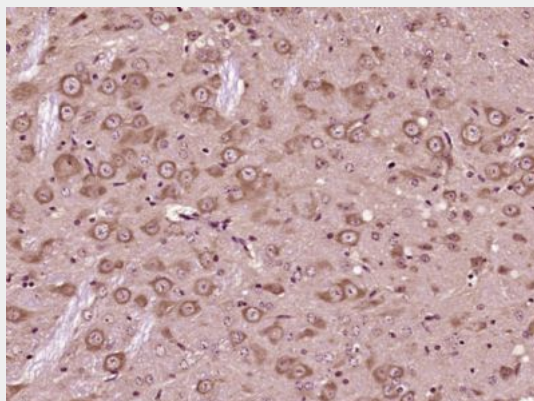
**Tissue Location**

Expressed in brain and placenta, and at much lower levels in kidney and pancreas  
(PubMed:9434767)

**KCNG1 Polyclonal Antibody - Protocols**

Provided below are standard protocols that you may find useful for product applications.

- [Western Blot](#)
- [Blocking Peptides](#)
- [Dot Blot](#)
- [Immunohistochemistry](#)
- [Immunofluorescence](#)
- [Immunoprecipitation](#)
- [Flow Cytometry](#)
- [Cell Culture](#)

**KCNG1 Polyclonal Antibody - Images**

Paraformaldehyde-fixed, paraffin embedded (Mouse brain); Antigen retrieval by boiling in sodium citrate buffer (pH6.0) for 15min; Block endogenous peroxidase by 3% hydrogen peroxide for 20 minutes; Blocking buffer (normal goat serum) at 37°C for 30min; Antibody incubation with (KCNG1) Polyclonal Antibody, Unconjugated (bs-12174R) at 1:400 overnight at 4°C, followed by operating according to SP Kit(Rabbit) (sp-0023) instructions and DAB staining.