

ZNF3 Polyclonal Antibody
Purified Rabbit Polyclonal Antibody (Pab)
Catalog # AP54775**Specification**

ZNF3 Polyclonal Antibody - Product Information

Application	IHC-P, IHC-F, IF, ICC, E
Primary Accession	P17036
Reactivity	Rat, Dog, Bovine
Host	Rabbit
Clonality	Polyclonal
Calculated MW	51 KDa
Physical State	Liquid
Immunogen	KLH conjugated synthetic peptide derived from Human ZNF3
Epitope Specificity	165-280/446
Isotype	IgG
Purity	
affinity purified by Protein A	
Buffer	0.01M TBS (pH7.4) with 1% BSA, 0.02% Proclin300 and 50% Glycerol.
SUBCELLULAR LOCATION	Nuclear
SIMILARITY	Belongs to the krueppel C2H2-type zinc-finger protein family. Contains 8 C2H2-type zinc fingers. Contains 1 KRAB domain.
Important Note	This product as supplied is intended for research use only, not for use in human, therapeutic or diagnostic applications.

Background Descriptions

Zinc-finger proteins contain DNA-binding domains and have a wide variety of functions, most of which encompass some form of transcriptional activation or repression. The majority of zinc-finger proteins contain a Kruppel-type DNA binding domain and a KRAB domain, which is thought to interact with KAP1, thereby recruiting histone modifying proteins. ZNF3, also known as KOX25, is a zinc finger protein belonging to the Kruppel C(2)H(2)-type zinc finger protein family. It localizes to the nucleus and is involved in cell differentiation and proliferation. ZNF3 is a 446 amino acid long protein that contains eight C(2)H(2)-type zinc fingers and one KRAB domain. ZNF3 is located in a cluster of KOX zinc-finger genes found on chromosome 10.

ZNF3 Polyclonal Antibody - Additional Information**Gene ID** 7551**Other Names**

Zinc finger protein 3, Zinc finger protein HF.12, Zinc finger protein HZF3.1, Zinc finger protein KOX25, ZNF3, KOX25

Dilution

IHC-P~~N/A<br \><span class
="dilution_IHC-F">IHC-F~~N/A<br \><span class
="dilution_IF">IF~~1:50~200<br \>ICC~~N/A<br
\>E~~N/A

Format

0.01M TBS(pH7.4), 0.09% (W/V) sodium azide and 50% Glyce

Storage

Store at -20 °C for one year. Avoid repeated freeze/thaw cycles. When reconstituted in sterile pH 7.4 0.01M PBS or diluent of antibody the antibody is stable for at least two weeks at 2-4 °C.

ZNF3 Polyclonal Antibody - Protein Information

Name ZNF3

Synonyms KOX25

Function

Involved in cell differentiation and/or proliferation.

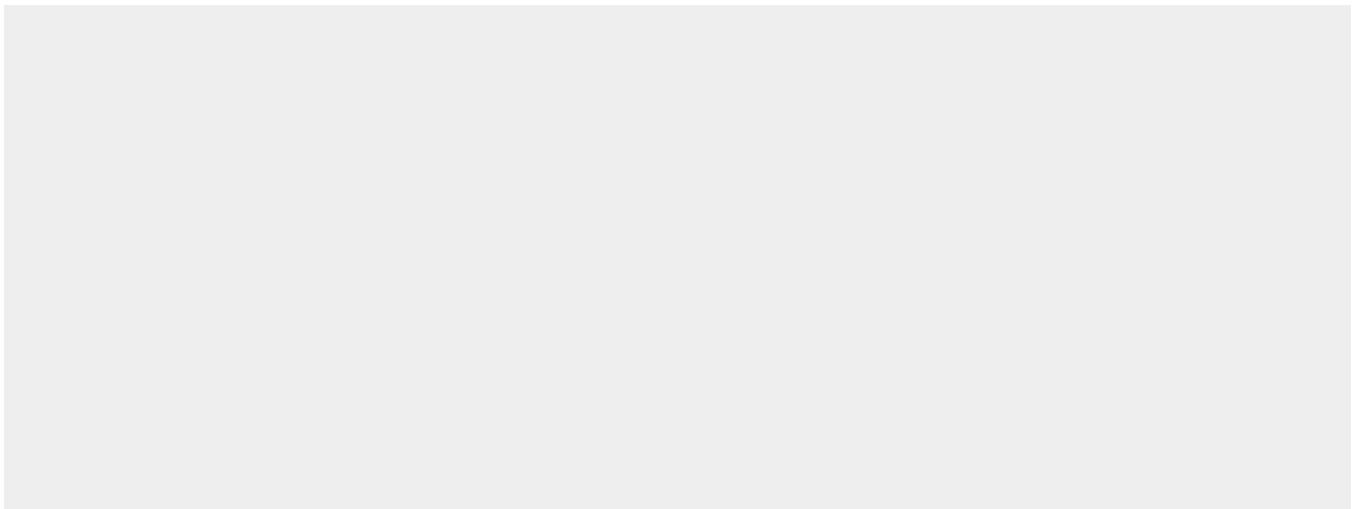
Cellular Location

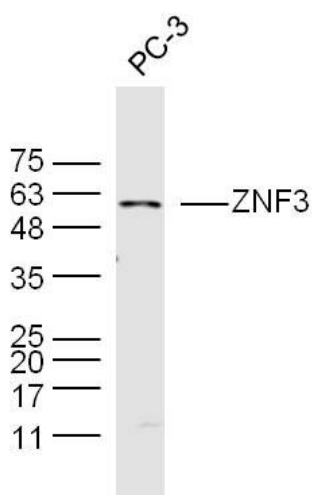
Nucleus.

ZNF3 Polyclonal Antibody - Protocols

Provided below are standard protocols that you may find useful for product applications.

- [Western Blot](#)
- [Blocking Peptides](#)
- [Dot Blot](#)
- [Immunohistochemistry](#)
- [Immunofluorescence](#)
- [Immunoprecipitation](#)
- [Flow Cytometry](#)
- [Cell Culture](#)

ZNF3 Polyclonal Antibody - Images



Sample: PC-3 Cell (Human) Lysate at 40 ug
Primary: Anti-ZNF3 (bs-12216R) at 1/300 dilution
Secondary: IRDye800CW Goat Anti-Rabbit IgG at 1/20000 dilution
Predicted band size: 51 kD
Observed band size: 60 kD