

**PBX1 Polyclonal Antibody**  
**Purified Rabbit Polyclonal Antibody (Pab)**  
**Catalog # AP54814****Specification**

---

**PBX1 Polyclonal Antibody - Product Information**

Application	WB
Primary Accession	<a href="#">P40424</a>
Reactivity	Rat, Dog, Bovine
Host	Rabbit
Clonality	Polyclonal
Calculated MW	46626

**PBX1 Polyclonal Antibody - Additional Information****Gene ID** 5087**Other Names**

Pre-B-cell leukemia transcription factor 1, Homeobox protein PBX1, Homeobox protein PRL, PBX1, PRL

**Format**

0.01M TBS(pH7.4), 0.09% (W/V) sodium azide and 50% Glyce

**Storage**

Store at -20 °C for one year. Avoid repeated freeze/thaw cycles. When reconstituted in sterile pH 7.4 0.01M PBS or diluent of antibody the antibody is stable for at least two weeks at 2-4 °C.

**PBX1 Polyclonal Antibody - Protein Information****Name** PBX1**Synonyms** PRL**Function**

Transcription factor which binds the DNA sequence 5'- TGATTGAT-3' as part of a heterodimer with HOX proteins such as HOXA1, HOXA5, HOXB7 and HOXB8 (PubMed:<a href="http://www.uniprot.org/citations/9191052" target="\_blank">9191052</a>). Binds to the DNA sequence 5'- TGATTGAC-3' in complex with a nuclear factor which is not a class I HOX protein (PubMed:<a href="http://www.uniprot.org/citations/9191052" target="\_blank">9191052</a>). Has also been shown to bind the DNA sequence 5'-ATCAATCAA-3' cooperatively with HOXA5, HOXB7, HOXB8, HOXC8 and HOXD4 (PubMed:<a href="http://www.uniprot.org/citations/8327485" target="\_blank">8327485</a>, PubMed:<a href="http://www.uniprot.org/citations/7791786" target="\_blank">7791786</a>). Acts as a transcriptional activator of PF4 in complex with MEIS1 (PubMed:<a href="http://www.uniprot.org/citations/12609849" target="\_blank">12609849</a>). Also activates transcription of SOX3 in complex with MEIS1 by binding to the 5'- TGATTGAC-3' consensus sequence (By similarity). In natural killer cells, binds to the NFIL3 promoter and acts as a transcriptional activator of NFIL3, promoting natural killer cell development (By similarity). Plays

a role in the cAMP-dependent regulation of CYP17A1 gene expression via its cAMP-regulatory sequence (CRS1) (By similarity). Probably in complex with MEIS2, involved in transcriptional regulation by KLF4 (PubMed:<a href="http://www.uniprot.org/citations/21746878" target="\_blank">21746878</a>). Acts as a transcriptional activator of NKX2-5 and a transcriptional repressor of CDKN2B (By similarity). Together with NKX2-5, required for spleen development through a mechanism that involves CDKN2B repression (By similarity).

#### Cellular Location

Nucleus.

#### Tissue Location

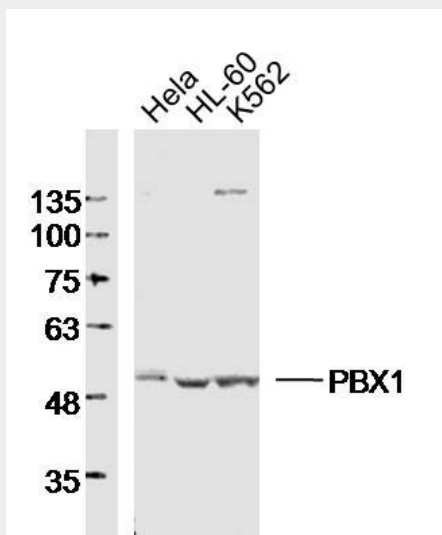
Expressed in the kidney. Expressed in the endothelial cells of the glomeruli and interstitium (at protein level) (PubMed:28270404). Expressed in all tissues except in cells of the B and T lineage. Expressed strongly in kidney and brain (PubMed:28270404).

### PBX1 Polyclonal Antibody - Protocols

Provided below are standard protocols that you may find useful for product applications.

- [Western Blot](#)
- [Blocking Peptides](#)
- [Dot Blot](#)
- [Immunohistochemistry](#)
- [Immunofluorescence](#)
- [Immunoprecipitation](#)
- [Flow Cytometry](#)
- [Cell Culture](#)

### PBX1 Polyclonal Antibody - Images



#### Sample:

HeLa Cell (Human) Lysate at 30 ug

HL-60 Cell (Human) Lysate at 30 ug

K562 Cell (Human) Lysate at 30 ug

Primary: Anti-PBX1 (bs-12296R) at 1/300 dilution

Secondary: IRDye800CW Goat Anti-Rabbit IgG at 1/20000 dilution

Predicted band size: 47kD

Observed band size: 50kD