

**LRRC25 Polyclonal Antibody**  
**Purified Rabbit Polyclonal Antibody (Pab)**  
**Catalog # AP54829**

**Specification**

**LRRC25 Polyclonal Antibody - Product Information**

Application	WB, IHC-P, IHC-F, IF, ICC, E
Primary Accession	<a href="#">Q8N386</a>
Host	Rabbit
Clonality	Polyclonal
Calculated MW	31 KDa
Physical State	Liquid
Immunogen	KLH conjugated synthetic peptide derived from human LRRC25
Epitope Specificity	81-180/305
Isotype	IgG
<b>Purity</b>	
affinity purified by Protein A	
Buffer	0.01M TBS (pH7.4) with 1% BSA, 0.02% Proclin300 and 50% Glycerol.
SUBCELLULAR LOCATION	Membrane; Single-pass type I membrane protein.
Important Note	This product as supplied is intended for research use only, not for use in human, therapeutic or diagnostic applications.

**Background Descriptions**

LRRC25 is a 305 amino acid protein that contains two LRR repeats. LRRC25 is a single-pass type I membrane protein that is expressed in monocyte-derived dendritic cells (MDDC), granulocytes, monocytes, plasmacytoid dendritic cells (PDC), B-lymphocytes, peripheral blood leukocytes, spleen and bone marrow, with lower levels in lymph nodes, fetal liver, and appendix. LRRC25 may play a role in the activation of cells of innate and acquired immunity.

**LRRC25 Polyclonal Antibody - Additional Information**

**Gene ID** 126364

**Other Names**

Leucine-rich repeat-containing protein 25, Monocyte and plasmacytoid-activated protein, LRRC25, MAPA

**Target/Specificity**

Expressed in plasmacytoid dendritic cells (PDC), monocyte-derived dendritic cells (MDDC), granulocytes, monocytes, B-lymphocytes, peripheral blood leukocytes, spleen, bone marrow, and, to a lesser extent, lymph nodes, fetal liver, and appendix but not in thymus.

**Dilution**

<span class = "dilution\_WB">WB~~1:1000</span><br \><span class = "dilution\_IHC-P">IHC-P~~N/A</span><br \><span class

=<span class="dilution\_IHC-F">IHC-F~~N/A</span><br \><span class="dilution\_IF">IF~~1:50~200</span><br \><span class="dilution\_ICC">ICC~~N/A</span><br \><span class="dilution\_E">E~~N/A</span>

### Storage

Store at -20 °C for one year. Avoid repeated freeze/thaw cycles. When reconstituted in sterile pH 7.4 0.01M PBS or diluent of antibody the antibody is stable for at least two weeks at 2-4 °C.

## LRRC25 Polyclonal Antibody - Protein Information

**Name** LRRC25

**Synonyms** MAPA

### Function

Plays a role in the inhibition of RLR-mediated type I interferon signaling pathway by targeting RIGI for autophagic degradation. Interacts specifically with ISG15-associated RIGI to promote interaction between RIGI and the autophagic cargo receptor p62/SQSTM1 to mediate RIGI degradation via selective autophagy (PubMed:<a href="http://www.uniprot.org/citations/29288164" target="\_blank">29288164</a>). Also plays a role in the inhibition of NF-kappa-B signaling pathway and inflammatory response by promoting the degradation of p65/RELA.

### Cellular Location

Membrane; Single-pass type I membrane protein. Cytoplasm

### Tissue Location

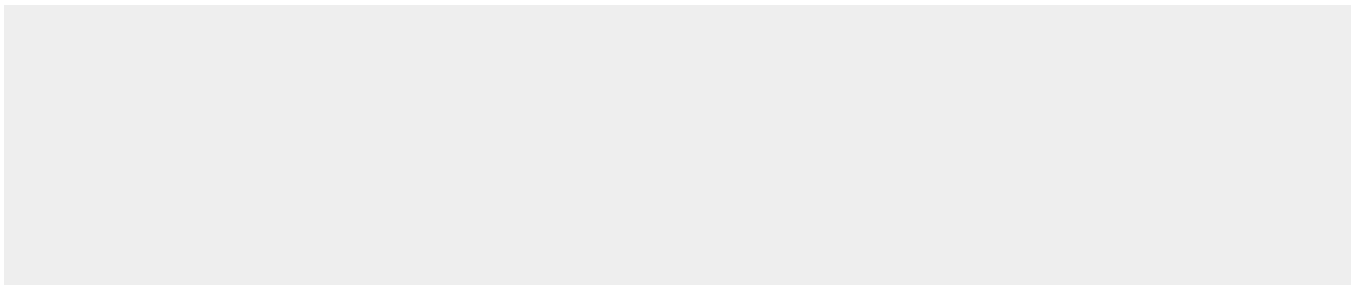
Expressed in plasmacytoid dendritic cells (PDC), monocyte-derived dendritic cells (MDDC), granulocytes, monocytes, B- lymphocytes, peripheral blood leukocytes, spleen, bone marrow, and, to a lesser extent, lymph nodes, fetal liver, and appendix but not in thymus.

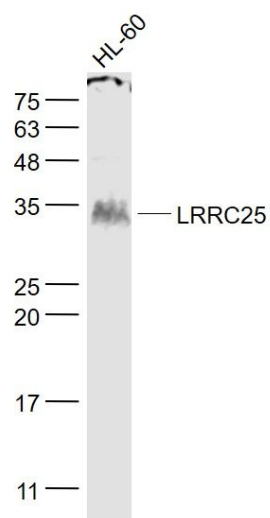
## LRRC25 Polyclonal Antibody - Protocols

Provided below are standard protocols that you may find useful for product applications.

- [Western Blot](#)
- [Blocking Peptides](#)
- [Dot Blot](#)
- [Immunohistochemistry](#)
- [Immunofluorescence](#)
- [Immunoprecipitation](#)
- [Flow Cytometry](#)
- [Cell Culture](#)

## LRRC25 Polyclonal Antibody - Images





**Sample:**

HL-60(Human) Cell Lysate at 30 ug

Primary: Anti- LRRC25 (bs-12339R) at 1/1000 dilution

Secondary: IRDye800CW Goat Anti-Rabbit IgG at 1/20000 dilution

Predicted band size: 31 kD

Observed band size: 31 kD