

5T4 Polyclonal Antibody
Purified Rabbit Polyclonal Antibody (Pab)
Catalog # AP54833**Specification**

5T4 Polyclonal Antibody - Product Information

Application	WB, IHC-P, IHC-F, IF, ICC, E
Primary Accession	Q13641
Reactivity	Rat, Dog, Bovine
Host	Rabbit
Clonality	Polyclonal
Calculated MW	43 KDa
Physical State	Liquid
Immunogen	KLH conjugated synthetic peptide derived from human TPBG/5T4
Epitope Specificity	31-100/420
Isotype	IgG
Purity	
affinity purified by Protein A	
Buffer	0.01M TBS (pH7.4) with 1% BSA, 0.02% Proclin300 and 50% Glycerol.
SUBCELLULAR LOCATION	Membrane.
SIMILARITY	Contains 6 LRR (leucine-rich) repeats. Contains 1 LRRCT domain. Contains 1 LRRNT domain.
Important Note	This product as supplied is intended for research use only, not for use in human, therapeutic or diagnostic applications.

Background Descriptions

TPBG is a 420 amino acid single-pass type I membrane protein expressed by all types of trophoblasts as early as 9 weeks of development. TPBG contains an N-terminal putative signal sequence, a 310-residue extracellular region, a membrane anchorage domain and a 44-amino acid cytoplasmic tail with a potential phosphorylation site. The extracellular region has seven potential N-glycosylation sites and seven leucine-rich repeats, which are located in two regions separated by a hydrophilic stretch. Suggested to be involved in cell adhesion, TPBG may also be associated with tumor growth and progression.

5T4 Polyclonal Antibody - Additional Information**Gene ID** 7162**Other Names**

Trophoblast glycoprotein, 5T4 oncofetal antigen, 5T4 oncofetal trophoblast glycoprotein, 5T4 oncotrophoblast glycoprotein, M6P1, Wnt-activated inhibitory factor 1, WAIF1, TPBG, 5T4

Target/Specificity

Expressed by all types of trophoblasts as early as 9 weeks of development. Specific for trophoblastic cells except for amniotic epithelium. In adult tissues, the expression is limited to a

few epithelial cell types but is found on a variety of carcinoma.

Dilution

WB~~1:1000<br \>IHC-P~~N/A<br \>IHC-F~~N/A<br \>IF~~1:50~200<br \>ICC~~N/A<br \>E~~N/A

Format

0.01M TBS(pH7.4), 0.09% (W/V) sodium azide and 50% Glyce

Storage

Store at -20 °C for one year. Avoid repeated freeze/thaw cycles. When reconstituted in sterile pH 7.4 0.01M PBS or diluent of antibody the antibody is stable for at least two weeks at 2-4 °C.

5T4 Polyclonal Antibody - Protein Information

Name TPBG

Synonyms 5T4

Function

May function as an inhibitor of Wnt/beta-catenin signaling by indirectly interacting with LRP6 and blocking Wnt3a-dependent LRP6 internalization.

Cellular Location

Cell membrane; Single-pass type I membrane protein

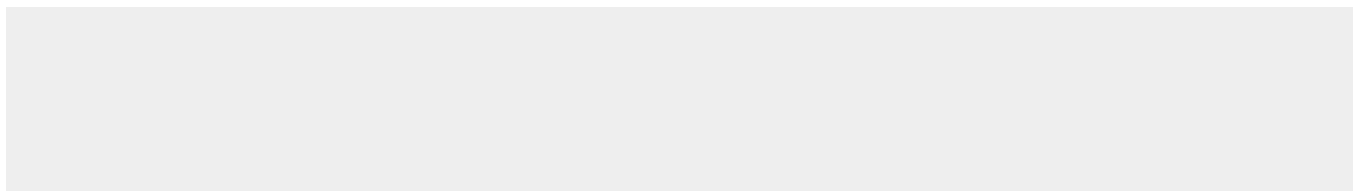
Tissue Location

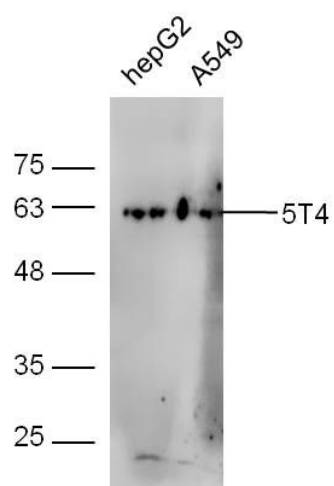
Expressed by all types of trophoblasts as early as 9 weeks of development. Specific for trophoblastic cells except for amniotic epithelium. In adult tissues, the expression is limited to a few epithelial cell types but is found on a variety of carcinoma

5T4 Polyclonal Antibody - Protocols

Provided below are standard protocols that you may find useful for product applications.

- [Western Blot](#)
- [Blocking Peptides](#)
- [Dot Blot](#)
- [Immunohistochemistry](#)
- [Immunofluorescence](#)
- [Immunoprecipitation](#)
- [Flow Cytometry](#)
- [Cell Culture](#)

5T4 Polyclonal Antibody - Images



Sample:

HepG2 Cell (Human) Lysate at 30 ug

A549 Cell (Human) Lysate at 30 ug

Primary: Anti-5T4 (bs-12348R) at 1/300 dilution

Secondary: IRDye800CW Goat Anti-Rabbit IgG at 1/20000 dilution

Predicted band size: 43 kD

Observed band size: 63 kD