

**FLJ11506 Antibody (C-term)**  
**Affinity Purified Rabbit Polyclonal Antibody (Pab)**  
**Catalog # AP5483b**

**Specification**

---

**FLJ11506 Antibody (C-term) - Product Information**

|                   |                             |
|-------------------|-----------------------------|
| Application       | FC, IHC-P, WB,E             |
| Primary Accession | <a href="#">Q6PD74</a>      |
| Other Accession   | <a href="#">NP_078942.3</a> |
| Reactivity        | Human                       |
| Host              | Rabbit                      |
| Clonality         | Polyclonal                  |
| Isotype           | Rabbit IgG                  |
| Calculated MW     | 34594                       |
| Antigen Region    | 286-313                     |

**FLJ11506 Antibody (C-term) - Additional Information**

**Gene ID** 79719

**Other Names**

Alpha- and gamma-adaptin-binding protein p34, AAGAB

**Target/Specificity**

This FLJ11506 antibody is generated from rabbits immunized with a KLH conjugated synthetic peptide between 286-313 amino acids from the C-terminal region of human FLJ11506.

**Dilution**

FC~~1:10~50

IHC-P~~1:50~100

WB~~1:1000

E~~Use at an assay dependent concentration.

**Format**

Purified polyclonal antibody supplied in PBS with 0.09% (W/V) sodium azide. This antibody is purified through a protein A column, followed by peptide affinity purification.

**Storage**

Maintain refrigerated at 2-8°C for up to 2 weeks. For long term storage store at -20°C in small aliquots to prevent freeze-thaw cycles.

**Precautions**

FLJ11506 Antibody (C-term) is for research use only and not for use in diagnostic or therapeutic procedures.

**FLJ11506 Antibody (C-term) - Protein Information**

**Name** AAGAB

**Function** May be involved in endocytic recycling of growth factor receptors such as EGFR.

**Cellular Location**

Cytoplasm, cytosol

**Tissue Location**

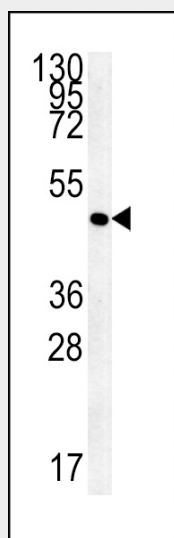
Widely expressed, including in skin and keratinocytes, with highest levels in adrenal gland, rectum and thymus

**FLJ11506 Antibody (C-term) - Protocols**

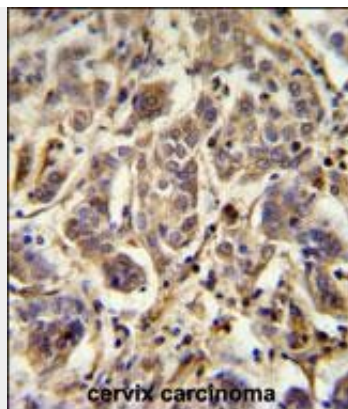
Provided below are standard protocols that you may find useful for product applications.

- [Western Blot](#)
- [Blocking Peptides](#)
- [Dot Blot](#)
- [Immunohistochemistry](#)
- [Immunofluorescence](#)
- [Immunoprecipitation](#)
- [Flow Cytometry](#)
- [Cell Culture](#)

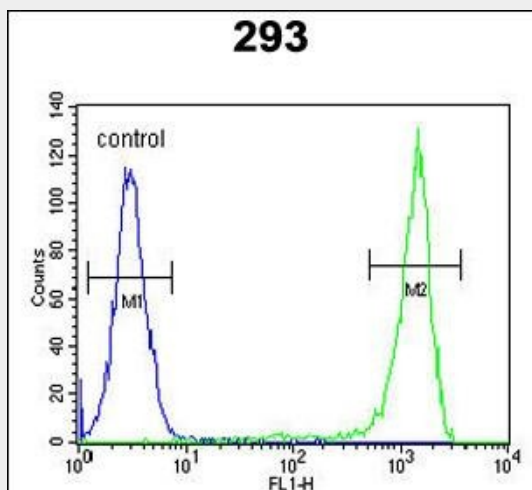
**FLJ11506 Antibody (C-term) - Images**



FLJ11506 Antibody (C-term) (Cat.#AP5483b) western blot analysis in 293 cell line lysates (35ug/lane). This demonstrates the FLJ11506 antibody detected the FLJ11506 protein (arrow).



FLJ11506 Antibody (C-term) (Cat. #AP5483b) immunohistochemistry analysis in formalin fixed and paraffin embedded human cervix carcinoma followed by peroxidase conjugation of the secondary antibody and DAB staining. This data demonstrates the use of the FLJ11506 Antibody (C-term) for immunohistochemistry. Clinical relevance has not been evaluated.



FLJ11506 Antibody (C-term) (Cat. #AP5483b) flow cytometric analysis of 293 cells (right histogram) compared to a negative control cell (left histogram). FITC-conjugated goat-anti-rabbit secondary antibodies were used for the analysis.

#### **FLJ11506 Antibody (C-term) - Background**

FLJ11506 may play a role in membrane traffic

#### **FLJ11506 Antibody (C-term) - References**

- Olsen, J.V., et al. Cell 127(3):635-648(2006)
- Simpson, J.C., et al. EMBO Rep. 1(3):287-292(2000)
- Page, L.J., et al. J. Cell Biol. 146(5):993-1004(1999)