

**TPM2 Polyclonal Antibody**  
**Purified Rabbit Polyclonal Antibody (Pab)**  
**Catalog # AP54853****Specification**

---

**TPM2 Polyclonal Antibody - Product Information**

Application	WB, IHC-P
Primary Accession	<a href="#">P07951</a>
Reactivity	Rat, Dog, Bovine
Host	Rabbit
Clonality	Polyclonal
Calculated MW	32851

**TPM2 Polyclonal Antibody - Additional Information****Gene ID** 7169**Other Names**

Tropomyosin beta chain, Beta-tropomyosin, Tropomyosin-2, TPM2, TMSB

**Format**

0.01M TBS(pH7.4), 0.09% (W/V) sodium azide and 50% Glyce

**Storage**

Store at -20 °C for one year. Avoid repeated freeze/thaw cycles. When reconstituted in sterile pH 7.4 0.01M PBS or diluent of antibody the antibody is stable for at least two weeks at 2-4 °C.

**TPM2 Polyclonal Antibody - Protein Information****Name** TPM2**Synonyms** TMSB**Function**

Binds to actin filaments in muscle and non-muscle cells. Plays a central role, in association with the troponin complex, in the calcium dependent regulation of vertebrate striated muscle contraction. Smooth muscle contraction is regulated by interaction with caldesmon. In non-muscle cells is implicated in stabilizing cytoskeleton actin filaments. The non-muscle isoform may have a role in agonist-mediated receptor internalization.

**Cellular Location**

Cytoplasm, cytoskeleton {ECO:0000250|UniProtKB:P58775}. Note=Associates with F-actin stress fibers. {ECO:0000250|UniProtKB:P58775}

**Tissue Location**

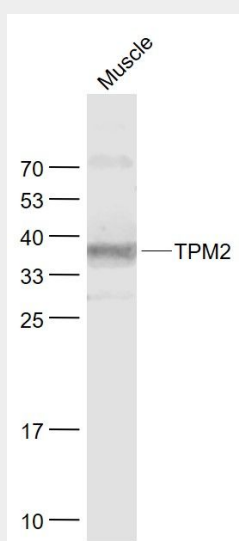
Present in primary breast cancer tissue, absent from normal breast tissue. {ECO:0000269|Ref.10}

## TPM2 Polyclonal Antibody - Protocols

Provided below are standard protocols that you may find useful for product applications.

- [Western Blot](#)
- [Blocking Peptides](#)
- [Dot Blot](#)
- [Immunohistochemistry](#)
- [Immunofluorescence](#)
- [Immunoprecipitation](#)
- [Flow Cytometry](#)
- [Cell Culture](#)

## TPM2 Polyclonal Antibody - Images



### Sample:

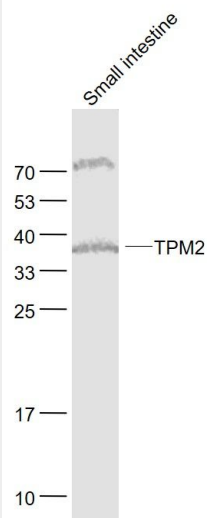
Small intestine (Mouse) Lysate at 40 ug

Primary: Anti- TPM2 (bs-1243R) at 1/1000 dilution

Secondary: IRDye800CW Goat Anti-Rabbit IgG at 1/20000 dilution

Predicted band size: 33 kD

Observed band size: 35 kD



**Sample:**

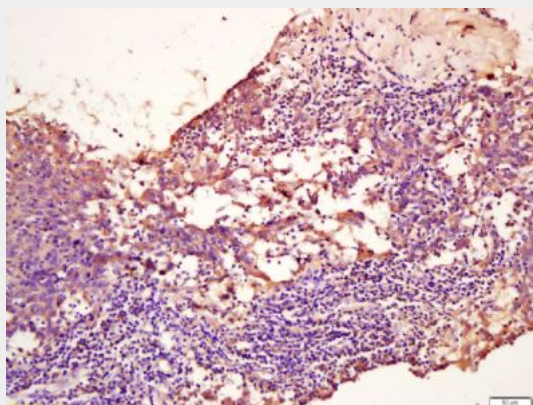
Small intestine (Mouse) Lysate at 40 ug

Primary: Anti- TPM2 (bs-1243R) at 1/1000 dilution

Secondary: IRDye800CW Goat Anti-Rabbit IgG at 1/20000 dilution

Predicted band size: 33 kD

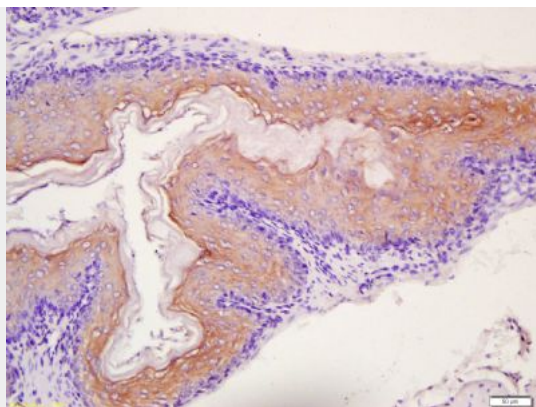
Observed band size: 35 kD



Tissue/cell: human breast carcinoma; 4% Paraformaldehyde-fixed and paraffin-embedded;

Antigen retrieval: citrate buffer ( 0.01M, pH 6.0 ), Boiling bathing for 15min; Block endogenous peroxidase by 3% Hydrogen peroxide for 30min; Blocking buffer (normal goat serum,C-0005) at 37°C for 20 min;

Incubation: Anti-TPM2 Polyclonal Antibody, Unconjugated(bs-1243R) 1:200, overnight at 4°C, followed by conjugation to the secondary antibody(SP-0023) and DAB(C-0010) staining



Tissue/cell: mouse stomach wall; 4% Paraformaldehyde-fixed and paraffin-embedded;

Antigen retrieval: citrate buffer ( 0.01M, pH 6.0 ), Boiling bathing for 15min; Block endogenous peroxidase by 3% Hydrogen peroxide for 30min; Blocking buffer (normal goat serum,C-0005) at 37°C for 20 min;

Incubation: Anti-TPM2 Polyclonal Antibody, Unconjugated(bs-1243R) 1:200, overnight at 4°C, followed by conjugation to the secondary antibody(SP-0023) and DAB(C-0010) staining