

PLEKHG5 Polyclonal Antibody
Purified Rabbit Polyclonal Antibody (Pab)
Catalog # AP54858

Specification

PLEKHG5 Polyclonal Antibody - Product Information

Application	IHC-P
Primary Accession	O94827
Reactivity	Rat, Pig, Dog, Bovine
Host	Rabbit
Clonality	Polyclonal
Calculated MW	111231

PLEKHG5 Polyclonal Antibody - Additional Information

Gene ID 57449

Other Names

Pleckstrin homology domain-containing family G member 5, PH domain-containing family G member 5, Guanine nucleotide exchange factor 720, GEF720, PLEKHG5, KIAA0720

Format

0.01M TBS(pH7.4), 0.09% (W/V) sodium azide and 50% Glyce

Storage

Store at -20 °C for one year. Avoid repeated freeze/thaw cycles. When reconstituted in sterile pH 7.4 0.01M PBS or diluent of antibody the antibody is stable for at least two weeks at 2-4 °C.

PLEKHG5 Polyclonal Antibody - Protein Information

Name PLEKHG5

Synonyms KIAA0720

Function

Functions as a guanine exchange factor (GEF) for RAB26 and thus regulates autophagy of synaptic vesicles in axon terminal of motoneurons (By similarity). Involved in the control of neuronal cell differentiation (PubMed:11704860). Plays a role in angiogenesis through regulation of endothelial cells chemotaxis. Affects also the migration, adhesion, and matrix/bone degradation in macrophages and osteoclasts (PubMed:23777631).

Cellular Location

Cytoplasm {ECO:0000250|UniProtKB:Q66T02}. Cytoplasm, perinuclear region {ECO:0000250|UniProtKB:Q66T02}. Cell membrane {ECO:0000250|UniProtKB:Q66T02}. Cell junction {ECO:0000250|UniProtKB:Q66T02}. Cell projection, lamellipodium {ECO:0000250|UniProtKB:Q66T02}. Note=Predominantly cytoplasmic, however when endothelial

cells are stimulated with lysophosphatidic acid, PLEKHG5 is found in perinuclear regions and at the cell membrane. Localizes at cell-cell junctions in quiescent endothelial cells, and relocalizes to cytoplasmic vesicle and the leading edge of lamellipodia in migrating endothelial cells.
{ECO:0000250|UniProtKB:Q66T02}

Tissue Location

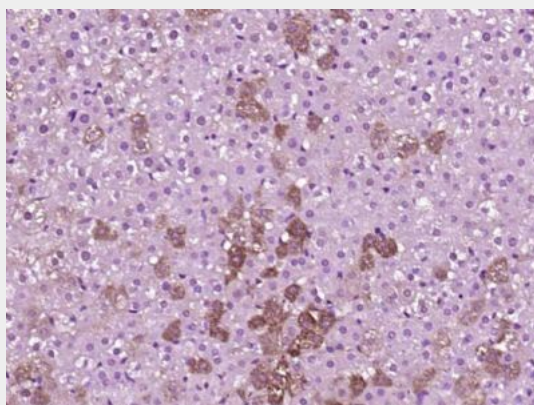
Predominantly expressed in the peripheral nervous system and brain. Highest expression is observed in heart, lung, kidney, testis and moderate expression is present in spleen, pancreas, skeletal muscle, ovary and liver. Weakly expressed in glioblastoma (GBM) cell lines.

PLEKHG5 Polyclonal Antibody - Protocols

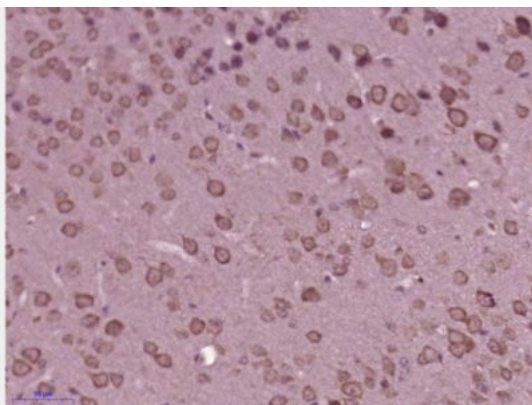
Provided below are standard protocols that you may find useful for product applications.

- [Western Blot](#)
- [Blocking Peptides](#)
- [Dot Blot](#)
- [Immunohistochemistry](#)
- [Immunofluorescence](#)
- [Immunoprecipitation](#)
- [Flow Cytometry](#)
- [Cell Culture](#)

PLEKHG5 Polyclonal Antibody - Images



Paraformaldehyde-fixed, paraffin embedded (Rat liver); Antigen retrieval by boiling in sodium citrate buffer (pH6.0) for 15min; Block endogenous peroxidase by 3% hydrogen peroxide for 20 minutes; Blocking buffer (normal goat serum) at 37°C for 30min; Antibody incubation with (PLEKHG5) Polyclonal Antibody, Unconjugated (bs-12455R) at 1:400 overnight at 4°C, followed by operating according to SP Kit(Rabbit) (sp-0023) instructions and DAB staining.



Paraformaldehyde-fixed, paraffin embedded (Mouse brain); Antigen retrieval by boiling in sodium citrate buffer (pH6.0) for 15min; Block endogenous peroxidase by 3% hydrogen peroxide for 20 minutes; Blocking buffer (normal goat serum) at 37°C for 30min; Antibody incubation with (PLEKHG5) Polyclonal Antibody, Unconjugated (bs-12455R) at 1:400 overnight at 4°C, followed by operating according to SP Kit(Rabbit) (sp-0023) instructions and DAB staining.