

ARFRP1 Polyclonal Antibody
Purified Rabbit Polyclonal Antibody (Pab)
Catalog # AP54871**Specification**

ARFRP1 Polyclonal Antibody - Product Information

Application	WB, IHC-P, IHC-F, IF, ICC, E
Primary Accession	Q13795
Reactivity	Rat, Pig, Dog
Host	Rabbit
Clonality	Polyclonal
Calculated MW	23 KDa
Physical State	Liquid
Immunogen	KLH conjugated synthetic peptide derived from human ARFRP1
Epitope Specificity	1-100/201
Isotype	IgG
Purity	
affinity purified by Protein A	
Buffer	0.01M TBS (pH7.4) with 1% BSA, 0.02% Proclin300 and 50% Glycerol.
SUBCELLULAR LOCATION	Golgi Apparatus
SIMILARITY	Belongs to the small GTPase superfamily. Arf family.
SUBUNIT	Interacts with SYS1.
Important Note	This product as supplied is intended for research use only, not for use in human, therapeutic or diagnostic applications.

Background Descriptions

The ADP-ribosylation factor (ARF) protein family are structurally and functionally conserved members of the Ras superfamily of regulatory GTP-binding proteins. ARFs influence vesicle trafficking and signal transduction in eukaryotic cells and they play a central role in the maintenance of organelle integrity, assembly of coat proteins and activation of phospholipase D (PC-PLD). ARFRP1 (ADP-ribosylation factor related protein 1), also known as ARP or ARL18, is a 201 amino acid membrane-associated GTPase that localizes to the plasma membrane and the Golgi apparatus and is related to the ARF family of regulatory proteins. Expressed in a variety of tissues, ARFRP1 interacts with SYS1 and is thought to be involved in plasma membrane-related signaling events. ARFRP1 exists as multiple alternatively spliced isoforms and is encoded by a gene which maps to a gene cluster on chromosome 20 that is commonly overexpressed in tumors, suggesting a role for ARFRP1 in carcinogenesis.

ARFRP1 Polyclonal Antibody - Additional Information**Gene ID** 10139**Other Names**

ADP-ribosylation factor-related protein 1, ARF-related protein 1, ARP, ARFRP1, ARP1

Target/Specificity

Found in most tissues.

Dilution

WB~~1:1000<br \>IHC-P~~N/A<br \>IHC-F~~N/A<br \>IF~~1:50~200<br \>ICC~~N/A<br \>E~~N/A

Format

0.01M TBS(pH7.4), 0.09% (W/V) sodium azide and 50% Glyce

Storage

Store at -20 °C for one year. Avoid repeated freeze/thaw cycles. When reconstituted in sterile pH 7.4 0.01M PBS or diluent of antibody the antibody is stable for at least two weeks at 2-4 °C.

ARFRP1 Polyclonal Antibody - Protein Information

Name ARFRP1

Synonyms ARP1

Function

Trans-Golgi-associated GTPase that regulates protein sorting. Controls the targeting of ARL1 and its effector to the trans-Golgi. Required for the lipidation of chylomicrons in the intestine and required for VLDL lipidation in the liver.

Cellular Location

Golgi apparatus. Golgi apparatus, trans-Golgi network {ECO:0000250|UniProtKB:Q8BXL7}
Note=Located in the trans-Golgi in the GTP-bound active state {ECO:0000250|UniProtKB:Q8BXL7}

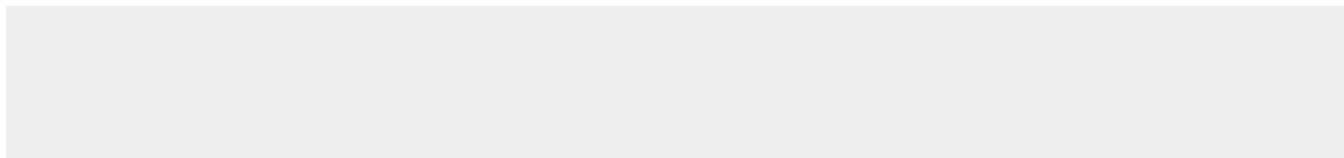
Tissue Location

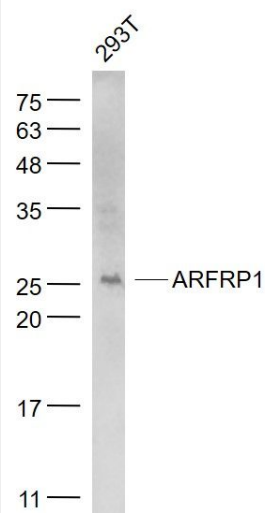
Found in most tissues.

ARFRP1 Polyclonal Antibody - Protocols

Provided below are standard protocols that you may find useful for product applications.

- [Western Blot](#)
- [Blocking Peptides](#)
- [Dot Blot](#)
- [Immunohistochemistry](#)
- [Immunofluorescence](#)
- [Immunoprecipitation](#)
- [Flow Cytometry](#)
- [Cell Culture](#)

ARFRP1 Polyclonal Antibody - Images



Sample:

293T(Human) Cell Lysate at 30 ug

Primary: Anti- ARFRP1 (bs-12514R) at 1/1000 dilution

Secondary: IRDye800CW Goat Anti-Rabbit IgG at 1/20000 dilution

Predicted band size: 23 kD

Observed band size: 25 kD