

**TXTP Antibody (Center)**  
**Affinity Purified Rabbit Polyclonal Antibody (Pab)**  
**Catalog # AP5489C****Specification**

---

**TXTP Antibody (Center) - Product Information**

Application	FC, IHC-P, WB,E
Primary Accession	<a href="#">P53007</a>
Other Accession	<a href="#">NP_005975.1</a>
Reactivity	Human
Host	Rabbit
Clonality	Polyclonal
Isotype	Rabbit IgG
Antigen Region	142-170

**TXTP Antibody (Center) - Additional Information****Gene ID** 6576**Other Names**

Tricarboxylate transport protein, mitochondrial, Citrate transport protein, CTP, Solute carrier family 25 member 1, Tricarboxylate carrier protein, SLC25A1, SLC20A3

**Target/Specificity**

This TXTP antibody is generated from rabbits immunized with a KLH conjugated synthetic peptide between 142-170 amino acids from the Central region of human TXTP.

**Dilution**

FC~~1:10~50

IHC-P~~1:10~50

WB~~1:1000

E~~Use at an assay dependent concentration.

**Format**

Purified polyclonal antibody supplied in PBS with 0.09% (W/V) sodium azide. This antibody is purified through a protein A column, followed by peptide affinity purification.

**Storage**

Maintain refrigerated at 2-8°C for up to 2 weeks. For long term storage store at -20°C in small aliquots to prevent freeze-thaw cycles.

**Precautions**

TXTP Antibody (Center) is for research use only and not for use in diagnostic or therapeutic procedures.

**TXTP Antibody (Center) - Protein Information****Name** SLC25A1

**Synonyms** SLC20A3

**Function** Mitochondrial electroneutral antiporter that exports citrate from the mitochondria into the cytosol in exchange for malate (PubMed:[26870663](#), PubMed:[29031613](#), PubMed:[29238895](#), PubMed:[39881208](#)). Also able to mediate the exchange of citrate for isocitrate, phosphoenolpyruvate, cis-aconitate and to a lesser extent trans- aconitate, maleate and succinate (PubMed:[29031613](#)). In the cytoplasm, citrate plays important roles in fatty acid and sterol synthesis, regulation of glycolysis, protein acetylation, and other physiopathological processes (PubMed:[29031613](#), PubMed:[29238895](#), PubMed:[39881208](#)).

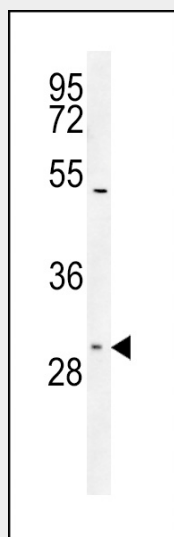
**Cellular Location**

Mitochondrion inner membrane {ECO:0000250|UniProtKB:Q8JZU2}; Multi-pass membrane protein

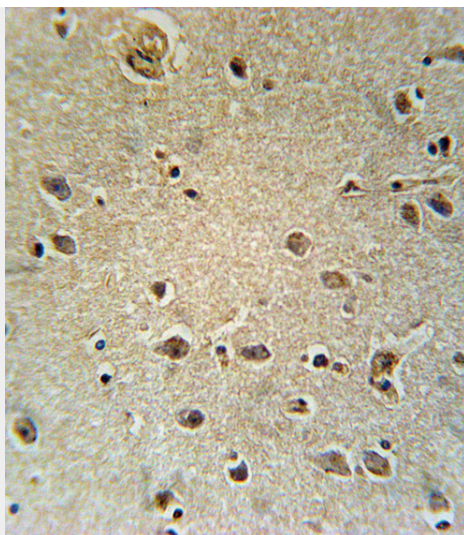
**TXTP Antibody (Center) - Protocols**

Provided below are standard protocols that you may find useful for product applications.

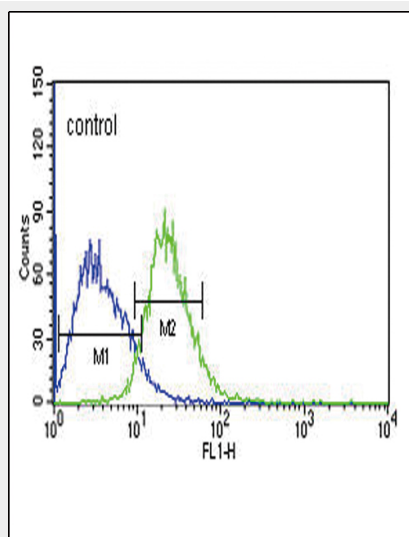
- [Western Blot](#)
- [Blocking Peptides](#)
- [Dot Blot](#)
- [Immunohistochemistry](#)
- [Immunofluorescence](#)
- [Immunoprecipitation](#)
- [Flow Cytometry](#)
- [Cell Culture](#)

**TXTP Antibody (Center) - Images**

TXTP Antibody (Center) (Cat.#AP5489c) western blot analysis in Jurkat cell line lysates (35ug/lane). This demonstrates the TXTP antibody detected the TXTP protein (arrow).



TXTP Antibody (Center) (Cat. #AP5489c) immunohistochemistry analysis in formalin fixed and paraffin embedded human brain tissue followed by peroxidase conjugation of the secondary antibody and DAB staining. This data demonstrates the use of the TXTP Antibody (Center) for immunohistochemistry. Clinical relevance has not been evaluated.



TXTP Antibody (Center) (Cat. #AP5489c) flow cytometric analysis of Jurkat cells (right histogram) compared to a negative control cell (left histogram). FITC-conjugated goat-anti-rabbit secondary antibodies were used for the analysis.

### TXTP Antibody (Center) - Background

Citrate transport protein (CTP) is involved in citrate-H(+)/malate exchange and is important for the bioenergetics of hepatic cells as it provides a carbon source for fatty acid and sterol biosyntheses, and NAD<sup>+</sup> for the glycolytic pathway.

### TXTP Antibody (Center) - References

- Morciano, P., et al. Hum. Mol. Genet. 18(21):4180-4188(2009)  
Iacobazzi, V., et al. Biochem. Biophys. Res. Commun. 386(1):186-191(2009)  
Trynka, G., et al. Gut 58(8):1078-1083(2009)