

CD99L2 Antibody (Center)
Affinity Purified Rabbit Polyclonal Antibody (Pab)
Catalog # AP5495c**Specification**

CD99L2 Antibody (Center) - Product Information

Application	WB, IHC-P,E
Primary Accession	Q8TCZ2
Other Accession	NP_113650.2
Reactivity	Human
Host	Rabbit
Clonality	Polyclonal
Isotype	Rabbit IgG
Calculated MW	27986
Antigen Region	39-66

CD99L2 Antibody (Center) - Additional Information**Gene ID** 83692**Other Names**

CD99 antigen-like protein 2, MIC2-like protein 1, CD99, CD99L2, MIC2L1

Target/Specificity

This CD99L2 antibody is generated from rabbits immunized with a KLH conjugated synthetic peptide between 39-66 amino acids from the Central region of human CD99L2.

Dilution

WB~~1:1000

IHC-P~~1:50~100

Format

Purified polyclonal antibody supplied in PBS with 0.09% (W/V) sodium azide. This antibody is purified through a protein A column, followed by peptide affinity purification.

Storage

Maintain refrigerated at 2-8°C for up to 2 weeks. For long term storage store at -20°C in small aliquots to prevent freeze-thaw cycles.

Precautions

CD99L2 Antibody (Center) is for research use only and not for use in diagnostic or therapeutic procedures.

CD99L2 Antibody (Center) - Protein Information**Name** CD99L2**Synonyms** MIC2L1

Function Plays a role in a late step of leukocyte extravasation helping cells to overcome the endothelial basement membrane. Acts at the same site as, but independently of, PECAM1 (By similarity). Homophilic adhesion molecule, but these interactions may not be required for cell aggregation (By similarity).

Cellular Location

Cell membrane; Single-pass type I membrane protein; Extracellular side. Cell junction. Secreted

Tissue Location

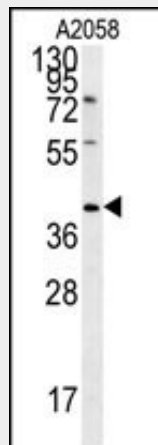
Detected in cerebrospinal fluid (at protein level) (PubMed:25326458). Expressed in many tissues, with low expression in thymus.

CD99L2 Antibody (Center) - Protocols

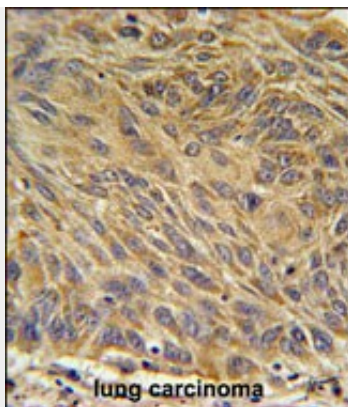
Provided below are standard protocols that you may find useful for product applications.

- [Western Blot](#)
- [Blocking Peptides](#)
- [Dot Blot](#)
- [Immunohistochemistry](#)
- [Immunofluorescence](#)
- [Immunoprecipitation](#)
- [Flow Cytometry](#)
- [Cell Culture](#)

CD99L2 Antibody (Center) - Images



CD99L2 Antibody (Center) (Cat.#AP5495c) western blot analysis in A2058 cell line lysates (35ug/lane). This demonstrates the CD99L2 antibody detected the CD99L2 protein (arrow).



CD99L2 Antibody (Center) (Cat. #AP5495c) immunohistochemistry analysis in formalin fixed and paraffin embedded human lung carcinoma followed by peroxidase conjugation of the secondary antibody and DAB staining. This data demonstrates the use of the CD99L2 Antibody (Center) for immunohistochemistry. Clinical relevance has not been evaluated.

CD99L2 Antibody (Center) - Background

CD99L2 may function as a homophilic adhesion molecule. It functions in leukocyte-endothelial cell interactions during leukocyte extravasation, and in particular, at the diapedesis step. Does not seem to be involved in docking of leukocytes to the vessel wall or in lymphocyte diapedesis (By similarity).

CD99L2 Antibody (Center) - References

Suh, Y.H., et al. Gene 307, 63-76 (2003)