

ZNF161 Polyclonal Antibody
Purified Rabbit Polyclonal Antibody (Pab)
Catalog # AP54971**Specification****ZNF161 Polyclonal Antibody - Product Information**

Application	WB, IHC-P, IHC-F, IF, ICC, E
Primary Accession	Q14119
Reactivity	Rat, Pig, Dog, Bovine
Host	Rabbit
Clonality	Polyclonal
Calculated MW	57 KDa
Physical State	Liquid
Immunogen	KLH conjugated synthetic peptide derived from human ZNF161
Epitope Specificity	181-280/521
Isotype	IgG
Purity	
affinity purified by Protein A	
Buffer	0.01M TBS (pH7.4) with 1% BSA, 0.02% Proclin300 and 50% Glycerol.
SUBCELLULAR LOCATION	Nucleus.
SIMILARITY	Belongs to the krueppel C2H2-type zinc-finger protein family. Contains 6 C2H2-type zinc fingers.
Important Note	This product as supplied is intended for research use only, not for use in human, therapeutic or diagnostic applications.

Background Descriptions

Transcriptional regulatory proteins containing tandemly repeated zinc finger domains are thought to be involved in both normal and abnormal cellular proliferation and differentiation. ZNF161 is a C2H2-type zinc finger protein (Koyano-Nakagawa et al., 1994 [PubMed 8035792]). See MIM 603971 for general information on zinc finger proteins.[supplied by OMIM, Sep 2008]

ZNF161 Polyclonal Antibody - Additional Information**Gene ID** 7716**Other Names**

Vascular endothelial zinc finger 1, Putative transcription factor DB1, Zinc finger protein 161, VEZF1, DB1, ZNF161

Target/Specificity

Ubiquitously expressed. Highest levels in skeletal muscle and kidney.

Dilution

WB~~1:1000<br \>IHC-P~~N/A<br \><span class =

=IHC-F~~N/A<br \>IF~~1:50~200<br \>ICC~~N/A<br \>E~~N/A

Format

0.01M TBS(pH7.4), 0.09% (W/V) sodium azide and 50% Glyce

Storage

Store at -20 °C for one year. Avoid repeated freeze/thaw cycles. When reconstituted in sterile pH 7.4 0.01M PBS or diluent of antibody the antibody is stable for at least two weeks at 2-4 °C.

ZNF161 Polyclonal Antibody - Protein Information

Name VEZF1

Synonyms DB1, ZNF161

Function

Possible transcription factor. Specifically binds to the CT/GC-rich region of the interleukin-3 promoter and mediates tax transactivation of IL-3.

Cellular Location

Nucleus.

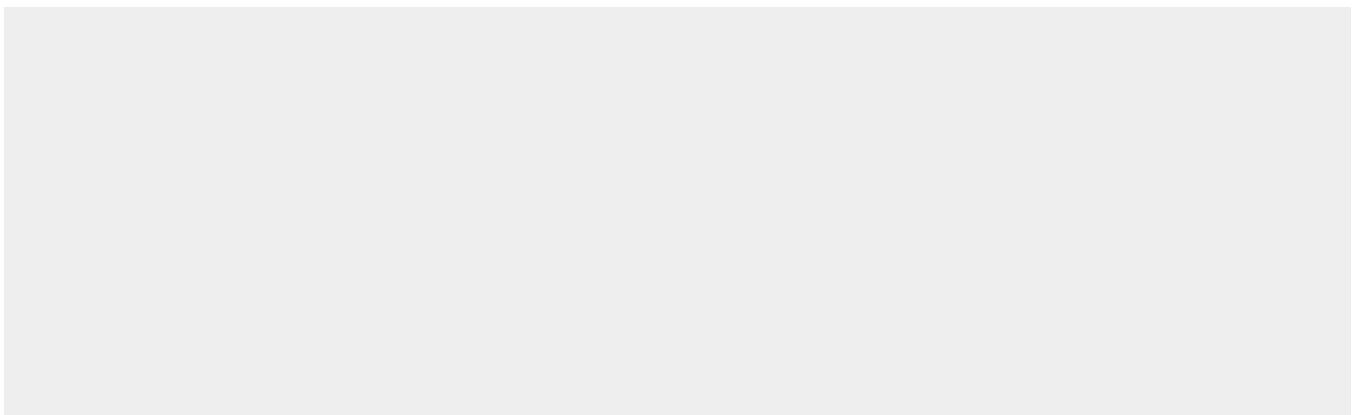
Tissue Location

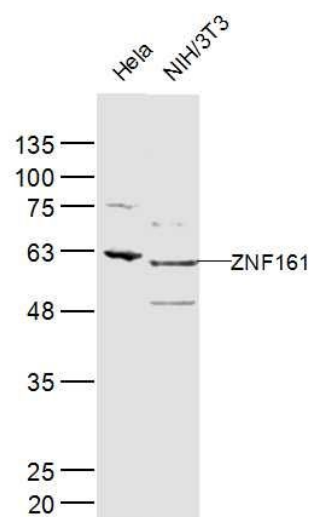
Ubiquitously expressed. Highest levels in skeletal muscle and kidney.

ZNF161 Polyclonal Antibody - Protocols

Provided below are standard protocols that you may find useful for product applications.

- [Western Blot](#)
- [Blocking Peptides](#)
- [Dot Blot](#)
- [Immunohistochemistry](#)
- [Immunofluorescence](#)
- [Immunoprecipitation](#)
- [Flow Cytometry](#)
- [Cell Culture](#)

ZNF161 Polyclonal Antibody - Images



Sample:

HeLa(Human) Cell Lysate at 40 ug

NIH/3T3(Human) Cell Lysate at 40 ug

Primary: Anti-ZNF161 (bs-12791R) at 1/300 dilution

Secondary: IRDye800CW Goat Anti-Rabbit IgG at 1/20000 dilution

Predicted band size: 57 kD

Observed band size: 57 kD