

ZNF207 Polyclonal Antibody
Purified Rabbit Polyclonal Antibody (Pab)
Catalog # AP54975**Specification****ZNF207 Polyclonal Antibody - Product Information**

Application	WB
Primary Accession	O43670
Reactivity	Rat, Pig, Dog, Bovine
Host	Rabbit
Clonality	Polyclonal
Calculated MW	50751

ZNF207 Polyclonal Antibody - Additional Information**Gene ID** 7756**Other Names**

BUB3-interacting and GLEBS motif-containing protein ZNF207, BuGZ, hBuGZ, Zinc finger protein 207, ZNF207 (http://www.genenames.org/cgi-bin/gene_symbol_report?hgnc_id=12998 target="_blank">HGNC:12998)

Format

0.01M TBS(pH7.4), 0.09% (W/V) sodium azide and 50% Glyce

Storage

Store at -20 °C for one year. Avoid repeated freeze/thaw cycles. When reconstituted in sterile pH 7.4 0.01M PBS or diluent of antibody the antibody is stable for at least two weeks at 2-4 °C.

ZNF207 Polyclonal Antibody - Protein Information**Name** ZNF207 ([HGNC:12998](#))**Function**

Kinetochore- and microtubule-binding protein that plays a key role in spindle assembly (PubMed:<http://www.uniprot.org/citations/24462186>, PubMed:<http://www.uniprot.org/citations/24462187>, PubMed:<http://www.uniprot.org/citations/26388440>). ZNF207/BuGZ is mainly composed of disordered low- complexity regions and undergoes phase transition or coacervation to form temperature-dependent liquid droplets. Coacervation promotes microtubule bundling and concentrates tubulin, promoting microtubule polymerization and assembly of spindle and spindle matrix by concentrating its building blocks (PubMed:<http://www.uniprot.org/citations/26388440>). Also acts as a regulator of mitotic chromosome alignment by mediating the stability and kinetochore loading of BUB3 (PubMed:<http://www.uniprot.org/citations/24462186>, PubMed:<http://www.uniprot.org/citations/24462187>). Mechanisms by which BUB3 is protected are unclear: according to a first report, ZNF207/BuGZ may act by blocking ubiquitination and proteasomal degradation of

BUB3 (PubMed:24462186). According to another report, the stabilization is independent of the proteasome (PubMed:24462187).

Cellular Location

Nucleus. Chromosome, centromere, kinetochore. Cytoplasm, cytoskeleton, spindle.

Note=Localizes primarily to the nucleus in interphase, concentrates at kinetochores prior to nuclear envelope breakdown and during early prometaphase, and disappears from kinetochores upon microtubule-binding

Tissue Location

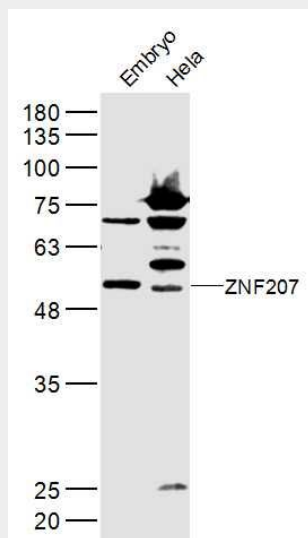
Ubiquitous..

ZNF207 Polyclonal Antibody - Protocols

Provided below are standard protocols that you may find useful for product applications.

- [Western Blot](#)
- [Blocking Peptides](#)
- [Dot Blot](#)
- [Immunohistochemistry](#)
- [Immunofluorescence](#)
- [Immunoprecipitation](#)
- [Flow Cytometry](#)
- [Cell Culture](#)

ZNF207 Polyclonal Antibody - Images



Sample:

Embryo (Mouse) Lysate at 40 ug

HeLa (Human) Lysate at 30 ug

Primary: Anti-ZNF207 (bs-12798R) at 1/300 dilution

Secondary: IRDye800CW Goat Anti-Rabbit IgG at 1/20000 dilution

Predicted band size: 51 kD

Observed band size: 51 kD

