

STCH/HSPA13 Polyclonal Antibody
Purified Rabbit Polyclonal Antibody (Pab)
Catalog # AP54991**Specification**

STCH/HSPA13 Polyclonal Antibody - Product Information

Application	WB, IHC-P, IHC-F, IF, ICC
Primary Accession	P48723
Reactivity	Rat, Pig, Chimpanzee, Dog, Bovine
Host	Rabbit
Clonality	Polyclonal
Calculated MW	51927

STCH/HSPA13 Polyclonal Antibody - Additional Information**Gene ID** 6782**Other Names**

Heat shock 70 kDa protein 13, Microsomal stress-70 protein ATPase core, Stress-70 protein chaperone microsome-associated 60 kDa protein, HSPA13, STCH

Dilution

WB~~1:1000<br \>IHC-P~~N/A<br \>IHC-F~~N/A<br \>IF~~1:50~200<br \>ICC~~N/A

Format

0.01M TBS(pH7.4), 0.09% (W/V) sodium azide and 50% Glyce

Storage

Store at -20 °C for one year. Avoid repeated freeze/thaw cycles. When reconstituted in sterile pH 7.4 0.01M PBS or diluent of antibody the antibody is stable for at least two weeks at 2-4 °C.

STCH/HSPA13 Polyclonal Antibody - Protein Information**Name** HSPA13**Synonyms** STCH**Function**

Has peptide-independent ATPase activity.

Cellular Location

Microsome. Endoplasmic reticulum.

Tissue Location

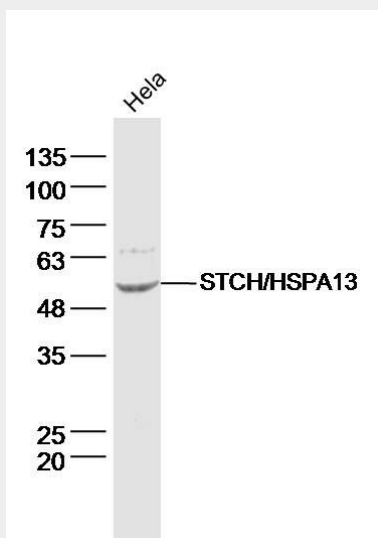
Constitutively expressed in all tissues.

STCH/HSPA13 Polyclonal Antibody - Protocols

Provided below are standard protocols that you may find useful for product applications.

- [Western Blot](#)
- [Blocking Peptides](#)
- [Dot Blot](#)
- [Immunohistochemistry](#)
- [Immunofluorescence](#)
- [Immunoprecipitation](#)
- [Flow Cytometry](#)
- [Cell Culture](#)

STCH/HSPA13 Polyclonal Antibody - Images



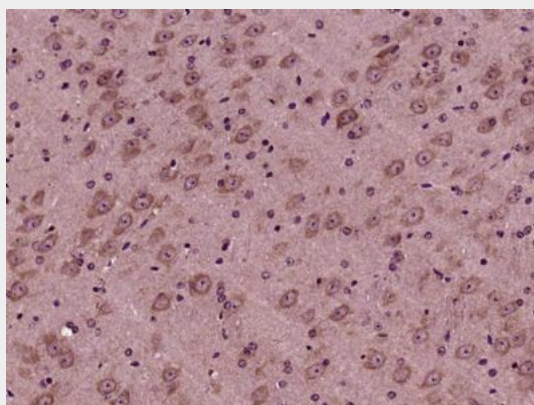
Sample: HeLa Cell Lysate at 40 ug

Primary: Anti-STCH/HSPA13 (bs-12823R) at 1/300 dilution

Secondary: IRDye800CW Goat Anti-Rabbit IgG at 1/20000 dilution

Predicted band size: 50 kD

Observed band size: 50 kD



Paraformaldehyde-fixed, paraffin embedded (Mouse brain); Antigen retrieval by boiling in sodium citrate buffer (pH6.0) for 15min; Block endogenous peroxidase by 3% hydrogen peroxide for 20

minutes; Blocking buffer (normal goat serum) at 37°C for 30min; Antibody incubation with (STCH) Polyclonal Antibody, Unconjugated (bs-12823R) at 1:400 overnight at 4°C, followed by operating according to SP Kit(Rabbit) (sp-0023) instructions and DAB staining.