

BIG1 Polyclonal Antibody
Purified Rabbit Polyclonal Antibody (Pab)
Catalog # AP55005**Specification**

BIG1 Polyclonal Antibody - Product Information

Application	WB, IHC-P, IHC-F, IF, ICC, E
Primary Accession	Q9Y6D6
Reactivity	Rat, Pig, Dog, Bovine
Host	Rabbit
Clonality	Polyclonal
Calculated MW	208767

BIG1 Polyclonal Antibody - Additional Information**Gene ID** 10565**Other Names**

Brefeldin A-inhibited guanine nucleotide-exchange protein 1, Brefeldin A-inhibited GEP 1, ADP-ribosylation factor guanine nucleotide-exchange factor 1, p200 ARF guanine nucleotide exchange factor, p200 ARF-GEP1, ARFGEF1, ARFGEP1, BIG1

Dilution

WB~~1:1000<br \>IHC-P~~N/A<br \>IHC-F~~N/A<br \>IF~~1:50~200<br \>ICC~~N/A<br \>E~~N/A

Format

0.01M TBS(pH7.4), 0.09% (W/V) sodium azide and 50% Glyce

Storage

Store at -20 °C for one year. Avoid repeated freeze/thaw cycles. When reconstituted in sterile pH 7.4 0.01M PBS or diluent of antibody the antibody is stable for at least two weeks at 2-4 °C.

BIG1 Polyclonal Antibody - Protein Information**Name** ARFGEF1**Synonyms** ARFGEP1, BIG1**Function**

Promotes guanine-nucleotide exchange on ARF1 and ARF3. Promotes the activation of ARF1/ARF3 through replacement of GDP with GTP. Involved in vesicular trafficking. Required for the maintenance of Golgi structure; the function may be independent of its GEF activity. Required for the maturation of integrin beta-1 in the Golgi. Involved in the establishment and persistence of cell polarity during directed cell movement in wound healing. Proposed to act as A kinase-anchoring

protein (AKAP) and may mediate crosstalk between Arf and PKA pathways. Inhibits GAP activity of MYO9B probably through competitive RhoA binding. The function in the nucleus remains to be determined.

Cellular Location

Cytoplasm. Cytoplasm, perinuclear region. Golgi apparatus. Golgi apparatus, trans-Golgi network membrane. Nucleus Nucleus, nucleolus. Nucleus matrix. Note=Translocates from cytoplasm to membranes and nucleus upon cAMP treatment

Tissue Location

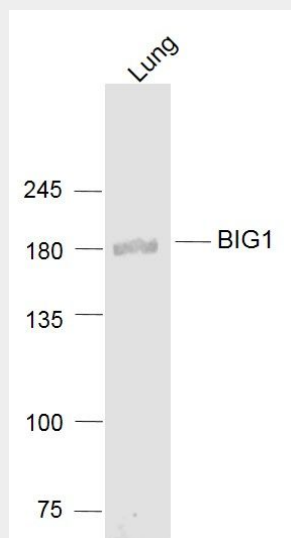
Expressed in placenta, lung, heart, brain, kidney and pancreas

BIG1 Polyclonal Antibody - Protocols

Provided below are standard protocols that you may find useful for product applications.

- [Western Blot](#)
- [Blocking Peptides](#)
- [Dot Blot](#)
- [Immunohistochemistry](#)
- [Immunofluorescence](#)
- [Immunoprecipitation](#)
- [Flow Cytometry](#)
- [Cell Culture](#)

BIG1 Polyclonal Antibody - Images



Sample:

Lung (Mouse) Lysate at 40 ug

Primary: Anti- BIG1 (bs-12866R) at 1/1000 dilution

Secondary: IRDye800CW Goat Anti-Rabbit IgG at 1/20000 dilution

Predicted band size: 209 kD

Observed band size: 209 kD