

**BPOZ Polyclonal Antibody**  
**Purified Rabbit Polyclonal Antibody (Pab)**  
**Catalog # AP55011**

**Specification**

**BPOZ Polyclonal Antibody - Product Information**

Application	WB, IHC-P, IHC-F, IF, ICC, E
Primary Accession	<a href="#">O969K4</a>
Reactivity	Rat
Host	Rabbit
Clonality	Polyclonal
Calculated MW	54 KDa
Physical State	Liquid
Immunogen	KLH conjugated synthetic peptide derived from human BPOZ/ABTB1
Epitope Specificity	151-250/478
Isotype	IgG
<b>Purity</b>	
affinity purified by Protein A	
Buffer	0.01M TBS (pH7.4) with 1% BSA, 0.02% Proclin300 and 50% Glycerol.
SUBCELLULAR LOCATION	Cytoplasm.
SIMILARITY	Contains 2 ANK repeats. Contains 2 BTB (POZ) domains.
Important Note	This product as supplied is intended for research use only, not for use in human, therapeutic or diagnostic applications.

**Background Descriptions**

This gene encodes a protein with an ankyrin repeat region and two BTB/POZ domains, which are thought to be involved in protein-protein interactions. Expression of this gene is activated by the phosphatase and tensin homolog, a tumor suppressor. Alternate splicing results in three transcript variants. [provided by RefSeq, Mar 2010]

**BPOZ Polyclonal Antibody - Additional Information**

**Gene ID** 80325

**Other Names**

Ankyrin repeat and BTB/POZ domain-containing protein 1, Elongation factor 1A-binding protein, ABTB1 ([http://www.genenames.org/cgi-bin/gene\\_symbol\\_report?hgnc\\_id=18275](http://www.genenames.org/cgi-bin/gene_symbol_report?hgnc_id=18275))  
target="\_blank">HGNC:18275</a>)

**Target/Specificity**

Ubiquitously expressed in all fetal tissues examined including heart, brain, liver, and kidney. Also expressed at lower levels in both adult heart and hypertrophic heart.

**Dilution**

<span class = "dilution\_WB">WB~~1:1000</span><br \><span class

=<span class="dilution\_IHC-P">IHC-P~~N/A</span><br \><span class="dilution\_IHC-F">IHC-F~~N/A</span><br \><span class="dilution\_IF">IF~~1:50~200</span><br \><span class="dilution\_ICC">ICC~~N/A</span><br \><span class="dilution\_E">E~~N/A</span>

**Format**

0.01M TBS(pH7.4), 0.09% (W/V) sodium azide and 50% Glyce

**Storage**

Store at -20 °C for one year. Avoid repeated freeze/thaw cycles. When reconstituted in sterile pH 7.4 0.01M PBS or diluent of antibody the antibody is stable for at least two weeks at 2-4 °C.

**BPOZ Polyclonal Antibody - Protein Information**

**Name** ABTB1 ([HGNC:18275](#))

**Function**

May act as a mediator of the PTEN growth-suppressive signaling pathway. May play a role in developmental processes.

**Cellular Location**

Cytoplasm.

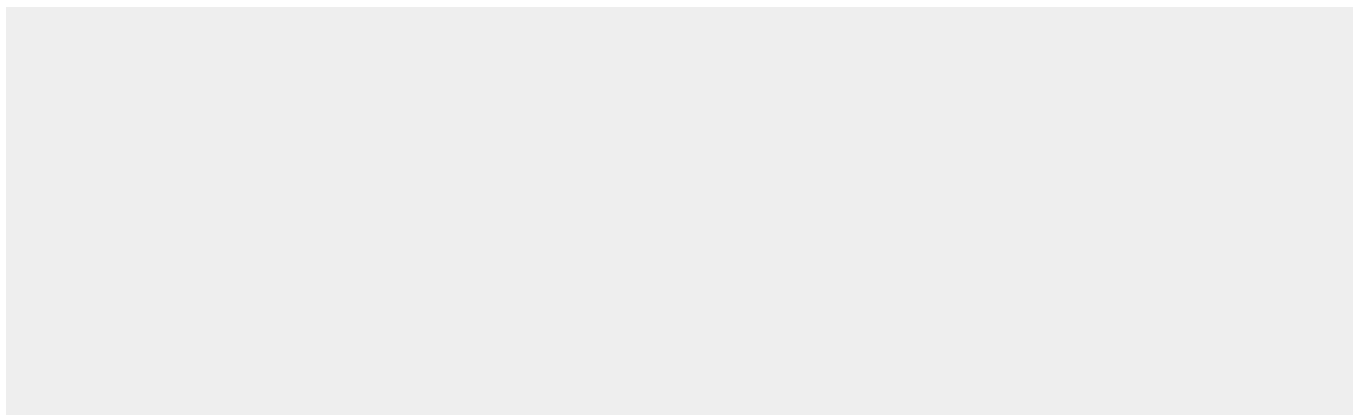
**Tissue Location**

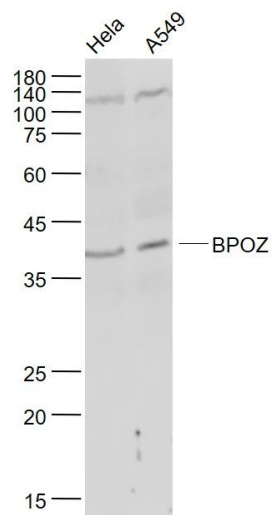
Ubiquitously expressed in all fetal tissues examined including heart, brain, liver, and kidney. Also expressed at lower levels in both adult heart and hypertrophic heart

**BPOZ Polyclonal Antibody - Protocols**

Provided below are standard protocols that you may find useful for product applications.

- [Western Blot](#)
- [Blocking Peptides](#)
- [Dot Blot](#)
- [Immunohistochemistry](#)
- [Immunofluorescence](#)
- [Immunoprecipitation](#)
- [Flow Cytometry](#)
- [Cell Culture](#)

**BPOZ Polyclonal Antibody - Images**



**Sample:**

HeLa(Human) Cell Lysate at 30 ug

A549(Human) Cell Lysate at 30 ug

Primary: Anti- BPOZ (bs-12881R) at 1/1000 dilution

Secondary: IRDye800CW Goat Anti-Rabbit IgG at 1/20000 dilution

Predicted band size: 54 kD

Observed band size: 38 kD