

Cytohesin 2 Polyclonal Antibody
Purified Rabbit Polyclonal Antibody (Pab)
Catalog # AP55021**Specification**

Cytohesin 2 Polyclonal Antibody - Product Information

Application	IHC-P
Primary Accession	Q99418
Reactivity	Rat, Pig, Dog
Host	Rabbit
Clonality	Polyclonal
Calculated MW	46546

Cytohesin 2 Polyclonal Antibody - Additional Information**Gene ID** 9266**Other Names**

Cytohesin-2, ARF exchange factor, ARF nucleotide-binding site opener, Protein ARNO, PH, SEC7 and coiled-coil domain-containing protein 2, CYTH2 (http://www.genenames.org/cgi-bin/gene_symbol_report?hgnc_id=9502)>HGNC:9502), ARNO, PSCD2, PSCD2L

Format

0.01M TBS(pH7.4), 0.09% (W/V) sodium azide and 50% Glyce

Storage

Store at -20 °C for one year. Avoid repeated freeze/thaw cycles. When reconstituted in sterile pH 7.4 0.01M PBS or diluent of antibody the antibody is stable for at least two weeks at 2-4 °C.

Cytohesin 2 Polyclonal Antibody - Protein Information**Name** CYTH2 ([HGNC:9502](#))**Synonyms** ARNO, PSCD2, PSCD2L**Function**

Acts as a guanine-nucleotide exchange factor (GEF). Promotes guanine-nucleotide exchange on ARF1, ARF3 and ARF6. Activates ARF factors through replacement of GDP with GTP (By similarity). The cell membrane form, in association with ARL4 proteins, recruits ARF6 to the plasma membrane (PubMed:http://www.uniprot.org/citations/17398095>17398095). Involved in neurite growth (By similarity).

Cellular Location

Cell membrane; Peripheral membrane protein. Cytoplasm. Cell projection {ECO:0000250|UniProtKB:P63034}. Cell projection, growth cone {ECO:0000250|UniProtKB:P63034}. Cell junction, tight junction {ECO:0000250|UniProtKB:P63034}. Cell junction, adherens junction

{ECO:0000250|UniProtKB:P63034}. Note=Both isoform 1 and isoform 2 are recruited to the cell membrane through its association with ARL4A, ARL4C and ARL4D. They require also interaction with phosphoinositides for targeting to plasma membrane (PubMed:17398095). In differentiating neuroblastoma cells, colocalizes with CCDC120 in both neurite shaft and growth cone areas.
{ECO:0000250|UniProtKB:P63034, ECO:0000269|PubMed:17398095}

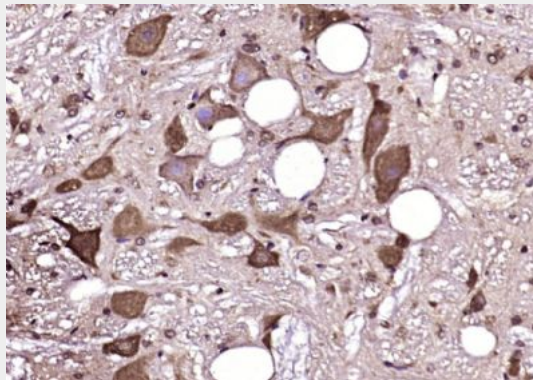
Tissue Location

Widely expressed..

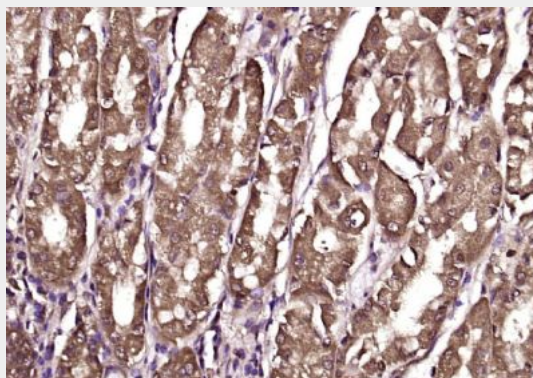
Cytohesin 2 Polyclonal Antibody - Protocols

Provided below are standard protocols that you may find useful for product applications.

- [Western Blot](#)
- [Blocking Peptides](#)
- [Dot Blot](#)
- [Immunohistochemistry](#)
- [Immunofluorescence](#)
- [Immunoprecipitation](#)
- [Flow Cytometry](#)
- [Cell Culture](#)

Cytohesin 2 Polyclonal Antibody - Images

Paraformaldehyde-fixed, paraffin embedded (rat brain); Antigen retrieval by boiling in sodium citrate buffer (pH6.0) for 15min; Block endogenous peroxidase by 3% hydrogen peroxide for 20 minutes; Blocking buffer (normal goat serum) at 37°C for 30min; Antibody incubation with (Cytohesin 2) Polyclonal Antibody, Unconjugated (bs-12922R) at 1:200 overnight at 4°C, followed by operating according to SP Kit(Rabbit) (sp-0023) instructions and DAB staining.



Paraformaldehyde-fixed, paraffin embedded (Human stomach); Antigen retrieval by boiling in sodium citrate buffer (pH6.0) for 15min; Block endogenous peroxidase by 3% hydrogen peroxide for 20 minutes; Blocking buffer (normal goat serum) at 37°C for 30min; Antibody incubation with (Cytohesin 2) Polyclonal Antibody, Unconjugated (bs-12922R) at 1:200 overnight at 4°C, followed by operating according to SP Kit(Rabbit) (sp-0023) instructions and DAB staining.