

HHAT Antibody (N-term)
Affinity Purified Rabbit Polyclonal Antibody (Pab)
Catalog # AP5503a**Specification**

HHAT Antibody (N-term) - Product Information

Application	FC, IHC-P, WB,E
Primary Accession	Q5VTY9
Other Accession	NP_001116306.1
Reactivity	Human
Host	Rabbit
Clonality	Polyclonal
Isotype	Rabbit IgG
Calculated MW	57313
Antigen Region	30-59

HHAT Antibody (N-term) - Additional Information**Gene ID** 55733**Other Names**

Protein-cysteine N-palmitoyltransferase HHAT, 231-, Hedgehog acyltransferase, Melanoma antigen recognized by T-cells 2, MART-2, Skinny hedgehog protein 1, HHAT, MART2, SKI1

Target/Specificity

This HHAT antibody is generated from rabbits immunized with a KLH conjugated synthetic peptide between 30-59 amino acids from the N-terminal region of human HHAT.

Dilution

FC~~1:10~50

IHC-P~~1:50~100

WB~~1:1000

E~~Use at an assay dependent concentration.

Format

Purified polyclonal antibody supplied in PBS with 0.09% (W/V) sodium azide. This antibody is purified through a protein A column, followed by peptide affinity purification.

Storage

Maintain refrigerated at 2-8°C for up to 2 weeks. For long term storage store at -20°C in small aliquots to prevent freeze-thaw cycles.

Precautions

HHAT Antibody (N-term) is for research use only and not for use in diagnostic or therapeutic procedures.

HHAT Antibody (N-term) - Protein Information

Name HHAT**Synonyms** MART2, SKI1

Function Palmitoyl acyltransferase that catalyzes N-terminal palmitoylation of SHH; which is required for SHH signaling (PubMed:[18534984](#), PubMed:[24784881](#), PubMed:[31875564](#)). It also catalyzes N-terminal palmitoylation of DHH (PubMed:[24784881](#)). Promotes the transfer of palmitoyl-CoA from the cytoplasmic to the luminal side of the endoplasmic reticulum membrane, where SHH palmitoylation occurs (PubMed:[31875564](#)). It is an essential factor for proper embryonic development and testicular organogenesis (PubMed:[24784881](#)).

Cellular Location

Endoplasmic reticulum membrane; Multi-pass membrane protein. Golgi apparatus membrane; Multi-pass membrane protein. Note=Co-localizes with SHH in the ER and Golgi membrane.

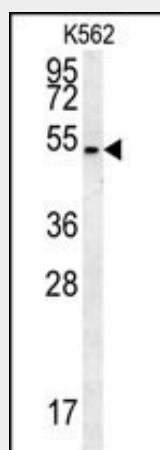
Tissue Location

Widely expressed. Expressed in fetal ovary and testis, with high levels of expression observed in Sertoli cells (PubMed:[24784881](#)).

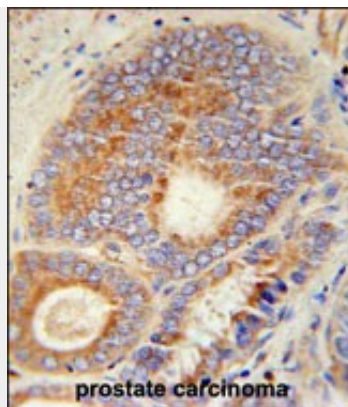
HHAT Antibody (N-term) - Protocols

Provided below are standard protocols that you may find useful for product applications.

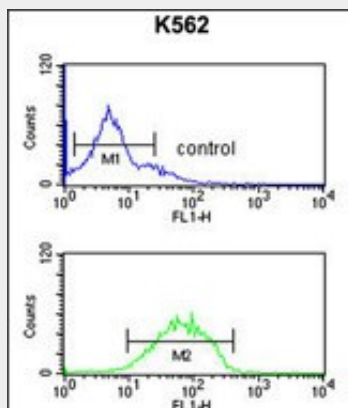
- [Western Blot](#)
- [Blocking Peptides](#)
- [Dot Blot](#)
- [Immunohistochemistry](#)
- [Immunofluorescence](#)
- [Immunoprecipitation](#)
- [Flow Cytometry](#)
- [Cell Culture](#)

HHAT Antibody (N-term) - Images

HHAT Antibody (N-term) (Cat.#AP5503a) western blot analysis in K562 cell line lysates (35ug/lane). This demonstrates the HHAT antibody detected the HHAT protein (arrow).



HHAT Antibody (N-term) (Cat. #AP5503a) immunohistochemistry analysis in formalin fixed and paraffin embedded human prostate carcinoma followed by peroxidase conjugation of the secondary antibody and DAB staining. This data demonstrates the use of the HHAT Antibody (N-term) for immunohistochemistry. Clinical relevance has not been evaluated.



HHAT Antibody (N-term) (Cat. #AP5503a) flow cytometric analysis of K562 cells (bottom histogram) compared to a negative control cell (top histogram). FITC-conjugated goat-anti-rabbit secondary antibodies were used for the analysis.

HHAT Antibody (N-term) - Background

'Skinny hedgehog' (SKI1) encodes an enzyme that acts within the secretory pathway to catalyze amino-terminal palmitoylation of 'hedgehog' (see MIM 600725).

HHAT Antibody (N-term) - References

Chamoun, Z., et al. Science 293(5537):2080-2084(2001)
Kawakami, Y., et al. J. Immunol. 166(4):2871-2877(2001)